



Network Video Recorder

User manual



Declaration:

Copyright ©2014

Without the written permission of the company, any company or individual should not extract, duplicate part of or all of contents of this manual and no spreading in any form.

As the upgrade of the products or other other reason, the contents of manual will be upgradedaperiodically. Unless otherwise stipulated, the manual is used as a instruction. All statements, information and suggestions of the manual does not constitute any ostensive or implied guarantee.

Product in kind prevail, final interpretations are owned by manufacturer.

Safety Precautions

Notice:

Please do not place and install equipment directly under the sunlight or near heating device.

Please do not install equipment at moist place or place with dust or soot.

Please keep equipment installed horizontally, or install equipment in a stable place, avoid the equipment falling down.

Please avoid liquid dropping on the equipment, make sure no objects filled with liquid on the equipment and prevent liquid from leaking.

Please install the device in a well ventilated place, do not block the vents of the equipment.

Please only use equipment within rated input/output.

Please do not disassembly at liberty.

Please transport, use and reserve the equipment within allowing humidity and temperature.

Warning:

Please do use the battery as requested, or it may lead to a battery fire, explosion or risk of burning!

Please use the same type of battery when changing it.

Please do use recommended cord sets(power cords), do use within the rated specifications.

Contents

Safety Precautions	II
1 Outline and Feature	1
1.1 Outline.....	1
1.2 Function Features:.....	1
2 NVR Appearance	2
2.1 The Front Panel.....	2
2.1.1 The Front Panel (For informational purposes only, subject to object)	2
2.2 Rear Panel.....	3
2.2.1 Rear Panel (For informational purposes only, subject to object)	3
2.3 Mouse Instructions.....	3
2.4 Input Method Introduction.....	4
3 Connecting NVR	5
3.1 Hard Disk Installation.....	5
3.2 Device Connection.....	6
4 NVR Startup	7
4.1 System Initialization.....	7
4.2 Preview Interface.....	7
5 NVR Menu	8
5.1 Menu Options.....	8
5.2 Main Menu Navigation.....	9
5.3 Main Menu.....	10
5.3.1 System Management.....	10
5.3.1.1 Common Setup.....	10
5.3.1.2 Network Setup.....	11
5.3.1.3 User Management.....	12
5.3.2 Channel Management.....	13
5.3.2.1 Channel Configuration.....	13
5.3.2.2 Preview Configuration.....	14
5.3.3 Record Management.....	14
5.3.3.1 Record Setup.....	15
5.3.3.2 Record Playback.....	16
5.3.4 Alarm Management.....	17
5.3.4.1 Alarm Input.....	17
5.3.5 System Maintain.....	18
5.3.5.1 HDD Manage.....	18
5.3.5.2 Device Upgrade.....	19
5.3.5.3 Restore Defaults.....	20
5.3.5.4 Log Info.....	20
5.3.5.5 Version Information.....	21
5.6 PTZ Controls.....	22
5.7 Shut Down.....	24
6 WEB Operation	25
6.1 Active X install.....	25
6.2 IE Login.....	26
6.3 IE Login Interface.....	26
6.4 Video Configuration.....	27
6.4.1 System Configuration.....	27
6.4.1.1 Common Configuration.....	27
6.4.1.2 Network Setting.....	28
6.4.1.3 User Management.....	28

6.4.2 Channel Configuration.....	29
6.4.2.1 Channel Setting.....	29
6.4.2.2 Encoding Setting.....	29
6.4.3 Video Setting.....	30
6.4.4 System Maintenance.....	30
6.4.4.1 Disk Management.....	30
6.4.4.2 Device Management.....	31
6.4.4.3 Restore Default.....	31
6.4.4.4 Journal information.....	31
6.4.4.5 Version information.....	32
6.5 Path Configuration.....	32
6.6 Logout.....	33
7 Appendix.....	34
7.1 Q&A.....	34
7.2 Maintenance.....	34

1 Outline and Feature

1.1 Outline

The item is a high-performance network DVR, characterizing local previewing, multi-picture division displaying & local real-time storage of recorded files. It supports shortcut operating of mouse and remote managing and controlling. It has two ways of storage--Front storage & client-side storage. Front-end monitoring points can be located anywhere on the network without geographical restrictions. Combined with other front-end equipment such as network cameras, network video server network, professional video surveillance system software to form a powerful safety monitoring network, in its network deployment system, focal point and monitoring points simply connect a network cable, no need to lay monitor video cable, audio cable etc from center to monitoring points, easy construction, lowcabling costs and low maintenance costs.

1.2 Function Features:

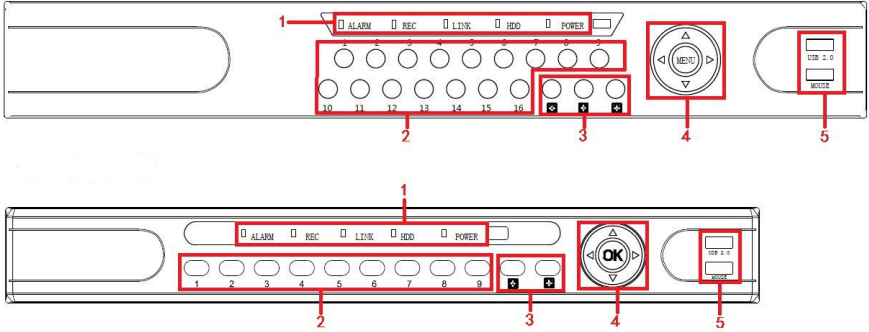
- H.264 video condense format, Support 1080P/720P/D1 resolution network camera input
- G.711U audio condenseformat
- Windows-style user interface, embedded real-time Linux3.0 operating system
- Support preview, recording, play back, backup
- Supports dual stream
- USB2.0, support backup, software upgrading & mouse operating
- Supports Chinese and English switch

Function	Function Brief Introduction
Real-time	Two video output, VGA & HDMI output
Record	H.264 standard compression, timing recording
Storage	Support SATA Hard Disk interface, video hard drive storage
Palyback	Support 1~4 channel playback and network mutil-channel play back
Backup	Support NVR backup to USB memory sticks, portable hard drive or a network backup to hard drive
Network Operating	Support for remote client access, improve system safety
Mouse Operating	Support USB mouse operating, easily and quickly set system parameters
Pan-tilt Control	Though Onvif protocol, fulfill control functions of network dome camera. PTZ preset point, automatic cruise

2 NVR Appearance

2.1 The Front Panel

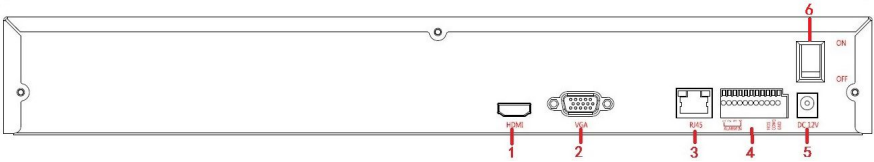
2.1.1 The Front Panel (For informational purposes only, subject to object)



No.	Button or indicator light	Function
1	Indicator light	Normal working hours, the corresponding indicator light turns
2	Channel button	Select single channel full screen display
3	Multi-channel preview	Switch and display 4,9,16 channel
4	Direction button	Move the button up or down, right or left to select menu
5	USB2.0	Connect mouse or USB memory stick backup

2.2 Rear Panel

2.2.1 Rear Panel (For informational purposes only, subject to object)



No.	Interface	Connection instruction
1	HDMI	Connect HDMI display device
2	VGA	Connect VGA display device, like computer displayer
3	RJ-45	Ethernet interface, connect network cable
4	Alarm terminals	Three sets of alarm input, a set of alarm output
5	Power supply	DC12V , NVR with power supply
6	Power switch	On/off power

2.3 Mouse Instructions

Mouse instruction

Operate NVR through mouse left button, right button & scroll wheel.

Mouse actions	Function
Click left mouse button	1. Select one of the options 2. insertion cursor, enter or modify the value of a parameter
Click right mouse button	1. When interface not locking , click right mouse button, system menu pops up; 2. When interface locking, click right button on real-time preview interface, login interface pop up ; 3. Entered to main menu, to a submenu of PTZ control, click right mouse button on the menu interface, return to previous menu (except video playback interface); 4. Entered to close system interface, click mouse right button on the interface, return to preview interface.
Double-click the mouse left button	1. When real-time preview multiple channels interface, double-click maximized channel display of one channel and return to the original state; 2. Double click the password input field on the login interface; 3. setting parameters (date, time, IP address, port number, bitstream value and user password) or user names
mouse movements	Select the menu or menu item.
Mousedrag	Drag progress bar to playback video
Slide mouse scrollwheel	1. Time setting; 2. Select the drop-down menu values;

2.4 Input Method Introduction

Click [XXX] with left mouse button to change input method, “←” is to delete mistyped symbols. Input methods include lower-case English, capital English & number.

【ABC】									
Q	W	E	R	T	Y	U	I	O	P
A	S	D	F	G	H	J	K	L	
Z	X	C	V	B	N	M	←		

Capital English Input

【123】			
1	2	3	4
5	6	7	8
9	0	.	←

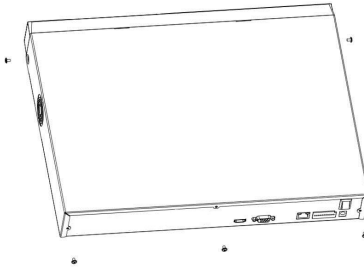
Number Input

3 Connecting NVR

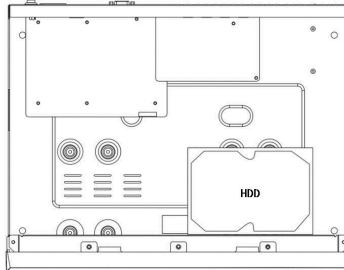
3.1 Hard Disk Installation

Hard Disk Installation:

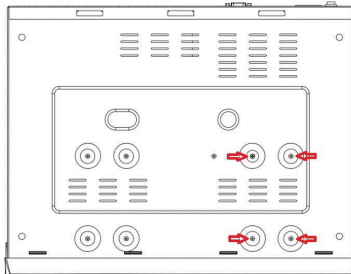
- (1) Loosen the fixing screw on the cover, open the cover.



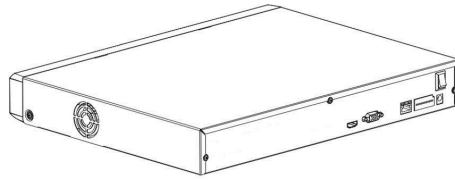
- (2) Align the four holes of hard disk button with hard disk mounting hole at the bottom of chassis.



- (3) Hold the hard disk with hand, turn over the chassis, fix the hard disk with screws at the indicated position.



- (4) After hard disk installed, turn over the chassis, fix the cover with screw.

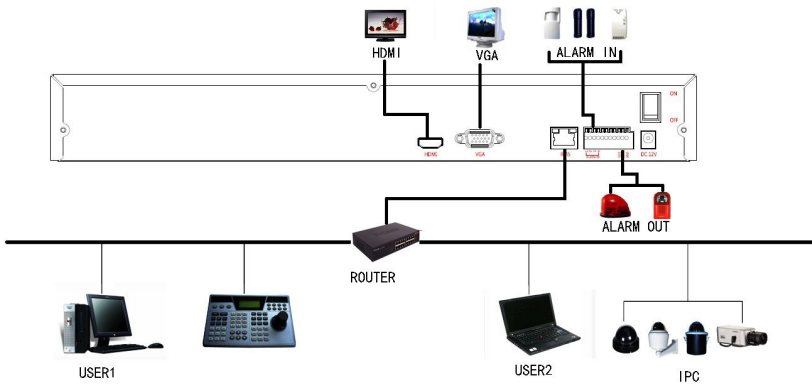


Note: 1. If user requires high performance of hard disk, we recommend the dedicated security hard disk.

2. Before replacing the hard disk, please shut off the power first and then open the case.

3.2 Device Connection

Use VGA cable or HDMI cable to transmit the NVR signal to the display. If it is a controllable PTZ, use wire to connect RS485 A cable and RS485 B cable to the corresponding RS485 interface on NVR.



4 NVR Startup

4.1 System Initialization

After connecting the device to the display, plug in the mouse, power cable and turn on the power switch on the rear panel, then start up the NVR. The system initialization interface is as shown in Picture 4-1:

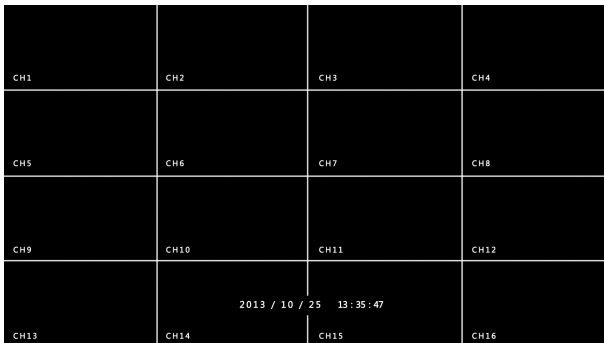


Picture 4-1

Notes: The insert figures in this user manual may not be the same as what you see on display. All figures here are just for reference.


4.2 Preview Interface

After the system is fully booted, it will enter into the default preview interface, shown in Picture 4-2.



Picture 4-2

After the device normally starts up, the default setting is to preview in multi-screen display mode. Products with different channels has different amount of split screens to display. On the preview interface, you can set the appropriate date and time. On the bottom left of the screen, it shows the recording status of each video channel or alarm status icon.

 icon: Indicates that the monitoring channel is under recording status.

5 NVR Menu

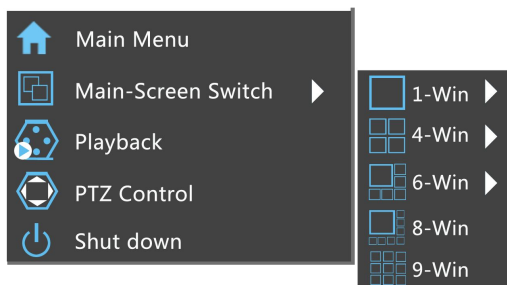
5.1 Menu Options

After the system is ready, click the right mouse button in the preview interface and it will pop up a system login interface, shown in Picture 5-1. Then select a user name, enter the user password, select the system language and click on the login button to login the system(the default username is admin, password is 12345);



Picture 5-1

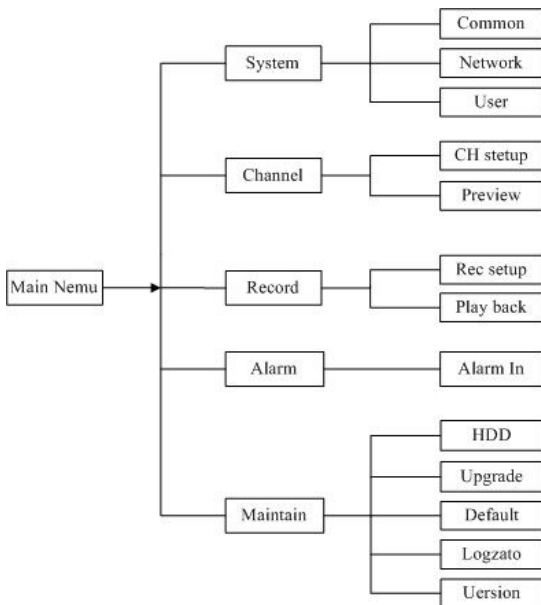
After login the system and back on the preview interface, click the right mouse button and it will pop up the Menu Options, shown in Picture 5-2. Then you can select options of the Main Menu, the Main Screen Switching, Playback, PTZ Control and System Shutdown. In addition, you can set the channel display as follows: single-screen display, four-screen display, eight-screen display, night-screen display, sixteen-screen display. It needs to set a specific number of channels to achieve single-screen display, four-screen display, etc.. The corresponding operation of the Main Menu Options will be illustrated in details in later chapters.



Picture 5-2

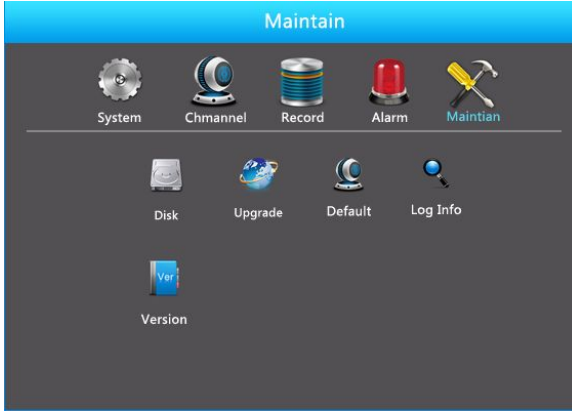
- **Single-screen Display:** Select one channel to display from CH1~CH16
- **Four-screen Display:** Divided into four groups to display (CH1~CH4、CH5~CH8、CH9 ~CH12、CH13~CH16)
- **Six-screen Display:** Divided into two groups to display (CH1~CH6、CH7 ~CH12)
- **Eight-screen Display:** Divided into two groups to display (CH1~CH8、CH9 ~CH16)
- **Night-screen Display:** Divided into two groups to display (CH1~CH9、CH10~CH16)
- **Sixteen-screen Display:** Display all channels CH1 ~CH16
- **Main Menu:** Click and enter the main menu
- **Playback:** Click and enter the playback interface
- **PTZ Control:** Click and enter the PTZ Control menu
- **Logout:** Logout the current user, restart the device and shut down the device

5.2 Main Menu Navigation



5.3 Main Menu

Main menu is divided into five parts, including systems management, channel management, video management, alarm management and system maintenance, as shown in Picture 5-3. Select one and click the left mouse button to open the corresponding next menu options.

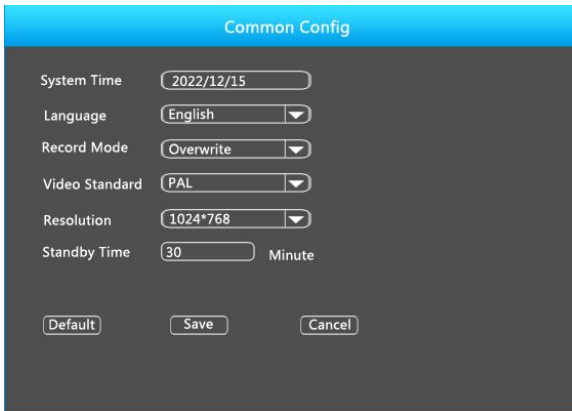


Picture 5-3

5.3.1 System Management

5.3.1.1 Common Setup

Click “Common Config” in system management interface, then interface of common setup will be out. As followed picture 5-4 shows:



Picture 5-4

- **System Time:** System date and time of NVR.
- **Language:** English & Chinese. Default language is English.

- **Record Mode:** Overwrite automatically, ie., NVR will automatically cover the previous record if hard disk is full.
- **Video Standard:** PAL or NTSC.
- **Resolution :** It means the resolution of video output of NVR. Optional resolution: 1024 × 768、1280 × 720、1280 × 1024、1920 × 1080. Default resolution is 1280 × 720. It will be valid only after NVR is re-started with all specifications saved.
- **Standby Time:** It means standby time of system without operation for NVR. If time exceeds the standby time, then you should re-login in system so as to operate NVR. Default standby time is 30 minutes. And standby time range is: 1 to 120 minutes.
- **Default:** Restore all specifications or parameters of common setup to be factory default specifications.
- **Save:** To save specifications or parameters of common setup.
- **Refresh:** Return to the former interface.

Remark : All “return” in OSD menu refer to back for former interface or the main interface. “()” in user manual refer to the optional choice of the selected item.

5.3.1.2 Network Setup

Click “Network” in system management interface, then interface of network setup will be out. As followed picture 5-5 shows:

The screenshot shows a 'Network Setup' window with a blue header. Below the header, there are several input fields and buttons. The fields are: Net Card (a dropdown menu), IP (a text box), Mask (a text box), GW (a text box), TCP Port (a text box), RtsP Port (a text box), Http Port (a text box), DNS (a text box), DNS2 (a text box), Broadcast (a text box), and MAC (a text box). At the bottom of the window, there are four buttons: Default, Save, Refresh, and Cancel.

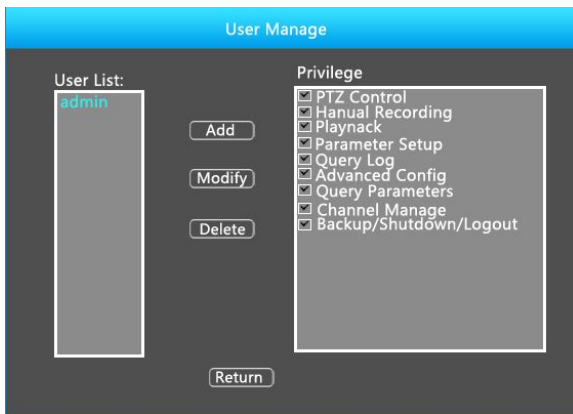
Picture 5-5

- **IP Address:** IP address of NVR
- **Subnet Mask:** Subnet mask of NVR
- **Default Gateway:** Default gateway of NVR
- **TCP Port:** Reserved
- **RTSP Port:** RTSP data port of NVR
- **HTTP Port:** Port for visit by IE browser for NVR

- **Primary DNS:** It is usually offered by local ISP. Your IP address of domain name server is entered here.
- **Secondary DNS:** Start secondary DNS when the primary one does not work.
- **Broadcast:** Reserved
- **MAC Address:** MAC address of NVR
- **Default:** Restore all parameters of network setup to be defaulted ones.
- **Save:** Save parameters of common setup interface.
- **Refresh:** Return to former management interface.

5.3.1.3 User Management

Click “User” in system management interface, then interface of user management will be out. As followed picture 5-6 shows:

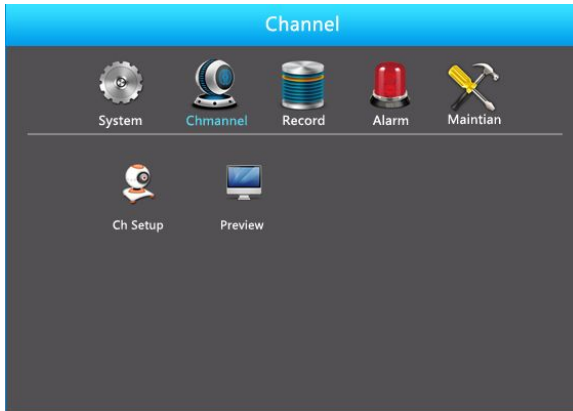


Picture 5-6

- **User List:** List added users. “admin” is super user/administrator, and we cannot change its privilege, but only its password. Other general users have no privilege of adding, modifying or deleting.
- **Privilege:** Privilege list of users. It includes PTZ control, playback, parameter setup, query log, advanced configuration, channel management, query parameter, backup /shut down/ logout.
- **Add :** To add a new user, which can be only done by **super administrator--admin**. Click “Add”, then enter user name and password, select privilege and save the parameters.
- **Modify:** To change information of users, which can be only done by **super administrator--admin**. First, choose a user, click “modify”, then enter old password and new password, modify privilege, and finally save the parameters.
- **Delete :** To delete user, which can be only done by **super administrator--admin**.

5.3.2 Channel Management

Click “Channel” icon, then interface will be out. It includes 3 sub-menu: channel setup, preview, and encode parameter. As followed picture 5-7 shows:



Picture 5-7

5.3.2.1 Channel Configuration

Click “Ch setup” in channel management interface, then interface of channel setup will be out. As followed picture 5-8 shows:

NO	IP	Device Type	Channel NO	Port	Vender Type

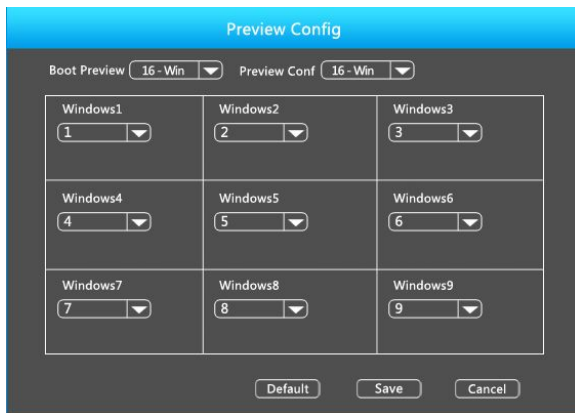
Picture 5-8

- **Channel:** Channel choice of NVR. There are 2 choices: one is for only one channel, and another is for all channels. A specific channel should be chosen for former choice.
- **Vender Type:** Onvif protocol.
- **Preview Stream:** Sub-stream is defaulted. Double stream should be set for IPC. Encode modes of both streams must be H.264 for normal preview. Resolution of sub-stream can be D1 or CIF mode.

- **Protocol:** TCP
- **User Name:** User name for login in IPC. (If default user name is not admin, please change for other valid user name.)
- **Password:** Password for login in IPC. (If default password is not admin, please change for other valid password.)
- **IP Address:** IP address of IPC that will be added in NVR.
- **Port:** Port for accessing IPC. Default port is 8999.
- **Enable:** Enable switch for channel. Default closed. Channel supports normal preview and record only when enable switch is open.
- **Search:** Click “Search”, NVR can search for IPC which support ONVIF in the same LAN. The IPC that is searched will be listed. Double click any IPC in the list, the related channel will automatically add this IPC in.
- **PgUP/PgDn:** To check all searched IPC by choosing PgUp/PgDn.
- **Save:** To save set parameters.
- **Return:** Return to former interface.

5.3.2.2 Preview Configuration

Click “Preview Config” in channel management interface, then interface of preview config will be out. It includes boot preview and image preview config. As followed picture 5-9 shows:



Picture 5-9

- **Boot Preview:** Support image preview of window 1, 4, 6, 8, 9 and 16.
- **Preview Config:** To set channel for preview. To show which window is supported for preview channel.
- **Default:** Restore all parameters of preview config to be default ones.
- **Save:** Save parameters of preview config interface.
- **Return:** Back to former interface.

5.3.3 Record Management

Click “Record” in main OSD interface, then interface of record will be out. It includes 2 sub-menu: record setup and playback. As followed picture 5-10 shows:



Picture 5-10

5.3.3.1 Record Setup

Click “Record Setup” under recording management interface to reach record setup interface. As followed picture 5-11 shows:



Picture 5-11

- **Channel:** Select a channel to record. There are 2 choices: single channel and all channel. A specific channel should be chosen for choice of single channel.
- **Start Record:** Make enable is open. Default enable is closed.
- **Week:** Select a certain day in a week or every day to record.
- **All Day:** Record the whole day. Default set is closed.
- **Period:** If not all day record, then any four periods can be set to record during the periods.
- **Default:** Restore parameters of record setup to be default ones.
- **Save:** Save parameters of current interface.

- **Cancel:** Cancel the set parameters of current interface.

5.3.3.2 Record Playback

Click “record playback” under record management to skip to record playback interface, as bellowed picture 5-12 shows:



Picture 5-12

You can check record according to date, time, channel and record mode. If there are record files, they will be listed after being checked. If there are not, then no record will be shown in this period.

- **Channel No.:** Select channel that you are going to check.
- **Type:** Select record type.
- **Start time/ End time:** To check period. Please pay attention that you cannot check it cross-day. Record file list shows information of record files.
- **Back up:** Insert a U disk, and select a record file, then you can undertake back up of this record. The mode is “avi”.
- **Search:** Set conditions for searching, and click “Search” to find record.
- **Number:** Listed number of record files. They are listed Chronologically.
- **Start time:** Time for starting record.
- **Size:** Size of record.
- **PgUp/ PgDn:** Each page of record list contains 21 record files. You can choose PgUp or PgDn to check all record files.
- **Multi-channel Playback:** At most 4 channels can be chosen for playback at the same time.
- **Play:** Choose a certain record file, and click “Play” to start play. Or double click the record file to play. During process of playback (one-channel or multi-channel playback), when you move the mouse to image area, then search bar and playback process bar will be hidden automatically.

Playback Control Bar

You can choose play, pause or fast forward under playback control bar.

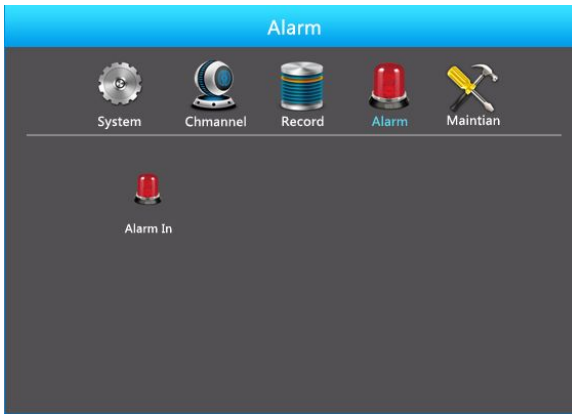
- **Playback Progress Bar:** Current play progress will be shown in playback interface. You can click on the bar for any time to view record of that time. If

you choose multi-channel playback, and there is no record in a certain channel, then this channel will not play any record.

- **Play:** Play in a normal speed.
- **Pause:** To stop current record playback.
- **Fast Forward:** Fast forward paly mode. Choices as followed: 1×、2×、4×、8×、16×. 1× is normal speed.
- **Close:** Exit the record playback interface.

5.3.4 Alarm Management

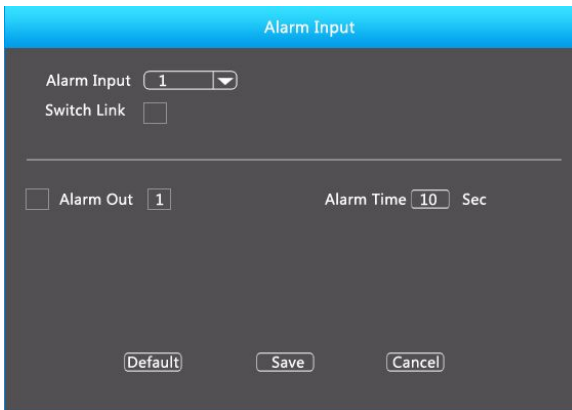
Click “Alarm” icon under main OSD interface, and click “Alarm in”. As followed picture 5-13 shows:



Picture 5-13

5.3.4.1 Alarm Input

Click “Alarm in” icon to enter alarm setup interface. Alarm input and alarm output can be set in this interface, as followed picture 5-14 shows:

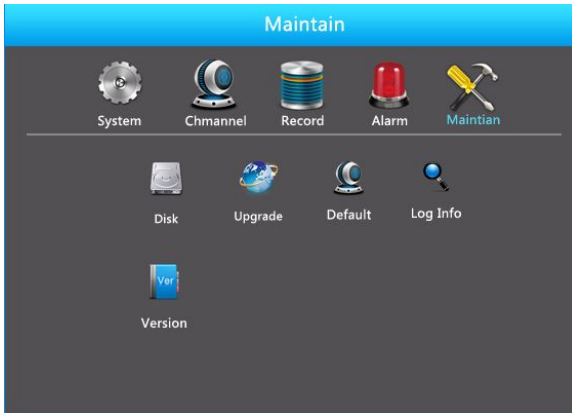


Picture 5-14

- **Alarm Input:** Choose the channel of Alarm Input
- **AlarmOut:** Set the channel AlarmOut,default setting is closed
- **Alarm Time:** Set the time of AlarmOut
- **Default:** Recover the setting of alarm to default value.
- **Save:** Save the settings of current interface.
- **Cancel:** Cancel the settings of current interface.

5.3.5 System Maintain

Left-click the Maintenance icon in main menu,please refer to the Picture 5-15 below,including 5 submenu items,HDD,Default,Upgrade,Log info,Version.



Picture 5-15

5.3.5.1 HDD Manage

Left-click the HDD Manage in the system Maintain menu,will switch to the interface of HDD Manage,as shown in Picture 5-16.



Picture 5-16

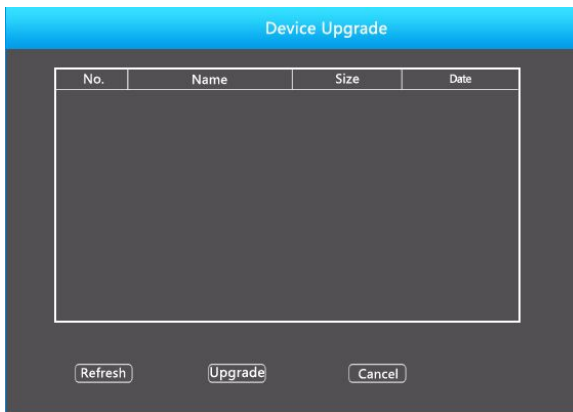
If the devices have connected the HDD successfully, the HDD manage list will show the information of HDD. You have to format the HDD if the HDD is the first time to connect; If the system detects that do not need to format the hard disk, the HDD status will displays "normal"; If do not connect successfully or could not detect hard disk, will displays the warning "Not connected the HDD";

- **HDD No.:** The number of HDD that connect the system.
- **State:** Detect the current working status of HDD, you could use only that displays "normal"; After formatting is completed, you need to restart NVR, the status displays "in use".
- **Total Capacity:** The total available HDD capacity, the single HDD capacity can not exceed the maximum capacity: 4TB
- **Residual Capacity:** Display the residual capacity of the current HDD;
- **Device Type:** SATA
- **Refresh:** Refresh HDD information in the list;
- **Format:** Formatting the HDD, select the HDD that needs to be formatted firstly, and then click the "Format" button, pop-up warning dialog "formatting will result in the selected HDD recording data loss, confirm that you want to continue?", If confirm to format then click on the "OK" button, otherwise click "Cancel."
- **Return:** Return to the former management interface

Note: After formatting the HDD, you need to restart the device.

5.3.5.2 Device Upgrade

Left-click the Device Upgrade button in the menu of system maintain, will switch to the interface of Device Upgrade, as shown in Picture 5-17:



Picture 5-17

If the device have detected upgrade files in the U disk, the related information of upgrade package (number, name, size, date) will be displayed

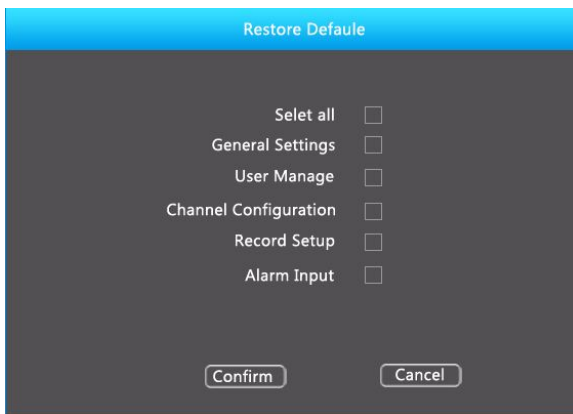
U disk Upgrade steps: Copy the upgrade file (named should be the format update_nvr.tgz) to the root directory of U disk, connect this U disk to the device's USB port, if did not display the upgrade file in the list, please refresh the interface

(If the upgrade package still cannot be searched out , please check whether the USB port connect well with the U disk , and also check whether the upgrade file name is correct). After the upgrade file appears, select the upgrade file, click the "upgrading" and begin to upgrade; If you don't want to upgrade, click cancel to return.

Note: During the upgrading process, please do not cut off the power or take off your U disk. After the upgrading, your system will restart automatically. (This process will takes about 3 to 5 minutes.) Here, we advice you to restore factory Settings after the upgrading.

5.3.5.3 Restore Defaults

Under the system maintenance menu, please click "restore default", and then switch to the interface of "restore the default". As shown in Picture 5-18:

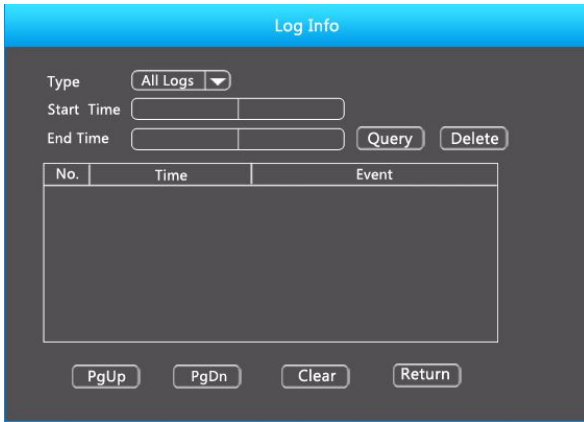


Picture 5-18

According to user selection, you can set the parameters of restore default for "General Settings", "User manage", "Channel configuration", "Record Setup" and "Alarm Input".

5.3.5.4 Log Info

Under the system maintenance menu, please click "Log Info", and then switch to the interface of "Log Info". As shown in Picture 5-19:



Picture 5-19

Viewing System Logs to access the logs and search for these events on one day a certain period of time.

- **Type:** Select the type of information you request
- **Start Time/End Time:** Enter the time to find the logs
- **Search:** Search for logs according to criteria
- **PgUp/PgDn:** You can view all logs through the PgUp/PgDn
- **Clear:** Clear all information
- **Return:** Return to the former menu

Specific Steps: Enter the log search menu, set search parameters, click the Search button to begin search. If logs matching the search criteria are found, it will be displayed in a list. To view all logs through PgUp/PgDn button.

5.3.5.5 Version Information

To view system Version information, Enter into the Main menu, shown in Picture 5-20, by clicking Main Menu>Maintain>Vision Info



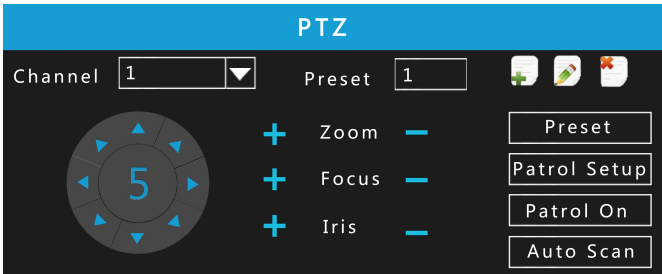
Picture 5-20

Users can find system version,including serial No.,model number,system version,Version Date.

- **Serial No.:** Showing the serial No.of the NVR
- **Model number:** Number of main board
- **Version:** System version number
- **Date:** Program created date

5.6 PTZ Controls

Select a channel preview window, click the right mouse button and click PTZ control options, the preview screen will switch to the single-channel display, and PTZ control interface appears in the lower left corner, as shown in Picture 5-21:



Picture 5-21

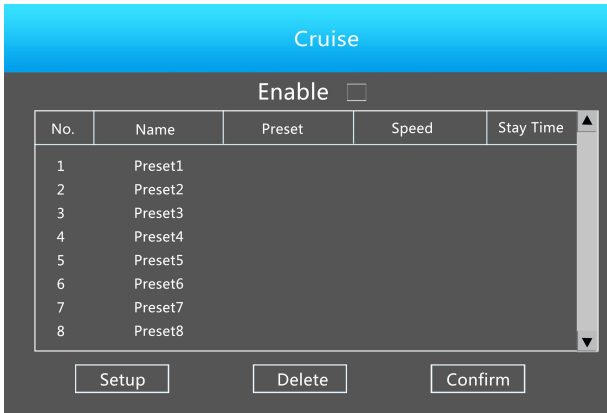
Adjusts the movement speed of the PTZ,(click middle button of the wheel to set speed)Directional Buttons controls the movements and directions of the PTZ. zoom, focus, iris can be adjust by increase "+", reducing the "-" button.

- **Presets position:**Can select certain Presets to Configure Preset or Call Preset,Clear Preset,range from 1 - 255.
- **Presets point:**The presets box choose a certain preset point need go to,After clink on the swith icon,PTZ will jump to that location. Click the Presets button, like pop-up screen shown in Picture 5-22, you can view the setting status of presets from 1-255;

Preset		
No.	Name	Set or no
2	Preset2	NO
3	Preset3	NO
4	Preset4	NO
5	Preset5	NO
6	Preset6	NO
7	Preset7	NO

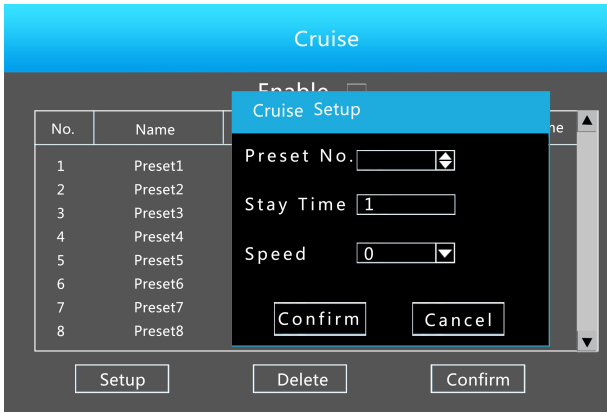
Picture 5-22

- **Cruise Settings:** Set the function of cruise, and related presets setting of cruise, including dwelling time and cruising speed. Shown in Picture 5-23 and Picture 5-24;



Picture 5-23

- **Stay Time:** Stay time on the Preset



Picture 5-24

- **Cruise speed:** Speed for Cruise
 - **Start Cruise:** Start Cruise, and patrol in fixed path.
 - **Auto Scan:** Clear all preset point.
- Notice: the NVR supports maximum 255 preset point, however, it is also affected by the PTZ Camera itself, for different PTZ Camera, the number of preset point supported could vary a lot.

5.7 Shut Down

In Preview interface, click the right mouse button and select Shut Down, move on to shut down the system interface. Therefore, the system can be canceled, restarted, and shut down, Picture 5-25:



Picture 5-25

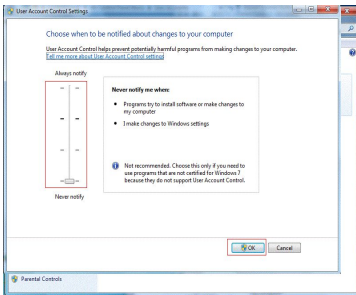
- **Logout:** Logout the current user, switch to user login interface.
- **Reboot:** Reboot the device.
- **Shutdown:** shutdown the device, just like computer safe shutdown mode;

6 WEB Operation

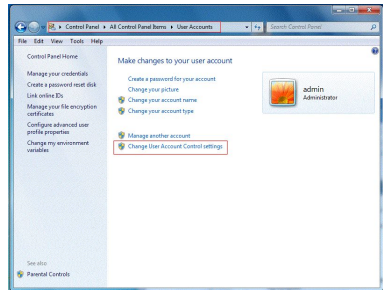
6.1 Active X install

To make sure NVR connects to Internet successfully, open IE Browser, input required IP address, the default setting is 192.168.1.160, and then the Active X will be downloaded and installed automatically

Notice: 1.For WIN 7, could have problems for backup and recording, if so,please check the Admin setting, procedure as follows:



WIN7-1



WIN7-2

2.The Active X can't be loaded? Please adjust the security level and firewall setting to the lowest, and make some adjustment to IE as well: Tool-Internet Option- Custom level-ActiveX- enable all the options below ActiveX and click OK! Finally, the Active X will be downloaded and installed automatically,please refer to the Picture 6-1.



Picture 6-1

6.2 IE Login

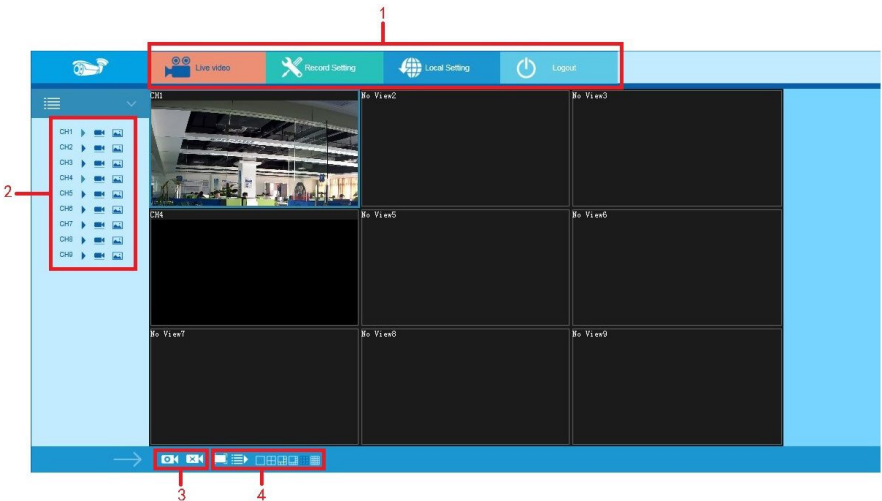
After the plug-in is installed, login interface as below Picture 6-2, entering the user name and password. The default user name and password are 12345, click the login than can remote login.



Picture 6-2




6.3 IE Login Interface

After logging the client successfully, entering live preview interface and video connection automatically. The interface as below Picture 6-3:





Picture 6-3

- **System Menu:** Including Live Video Record Setting, Local Setting and Logout.
- **Real-time Monitoring Channel:** Open/Close Preview, Local Video and Photograph.

Mark	Specification
CH1-CH9	Preview Channel
	Open or close corresponding preview channel
	Click the button, begin recording, the video saves in computer hard disk
	Click the button, capture images, the picture saves in computer hard disk

- **Open/Close All Channels Preview Image**

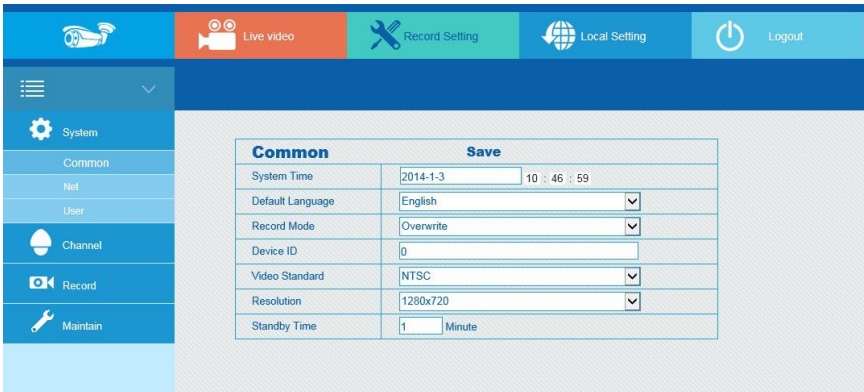
Mark	Specification
	Open all preview channels
	Close all preview channels

- **Preview Window Switch, from left to right are:** Single Channel, Four Channel, Six Channel, Eight Channel, Nine Channel, Sixteen Channel.

6.4 Video Configuration

6.4.1 System Configuration

6.4.1.1 Common Configuration



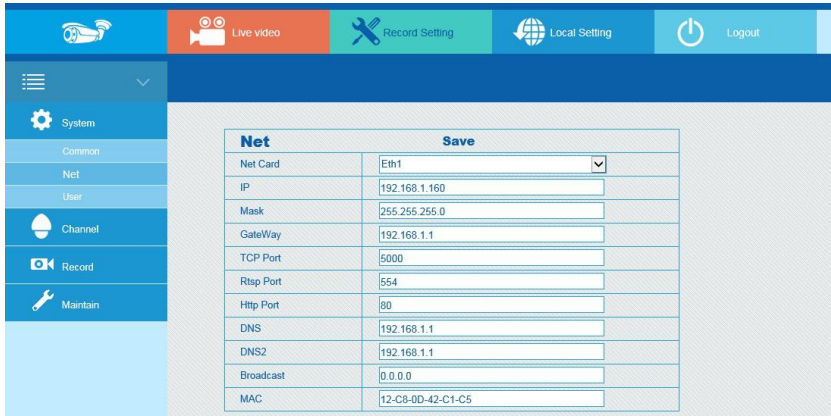
Picture 6-4

Setting up the current system time of device, date, system language, display resolution and other information.

Parameter	Specification
System Time	Set up the system time of device than saving
Default language	Set up the device language, you can change the language as you need

Record Model	Can be set to automatically overwrite when the hard disk is full
Device ID	Reserved
Video Standard	The video standard of device must be same with the IPC
Resolution	HDMI and VGA output resolution of device can be set
Standby time	Lock time of local time can be set, the time is 1-120 minutes

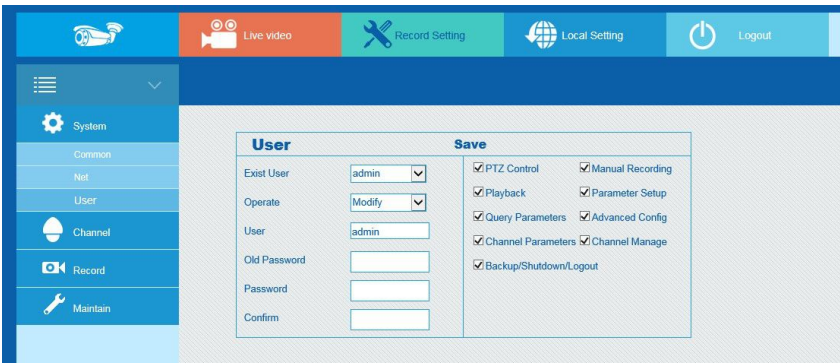
6.4.1.2 Network Setting



Picture 6-5

The IP address, Subnet Mask, Gateway, DNS , TCP port, Data port, HTTP port and related parameters of the device can be set by the interface. Related parameters setting consistent with NVR client; The IP address effects at once after you modify, don't need restart NVR device.

6.4.1.3 User Management



Picture 6-6

You can add or delete user, modify the information and rights of user by the interface; Related parameters setting consistent with NVR client.

6.4.2 Channel Configuration

6.4.2.1 Channel Setting

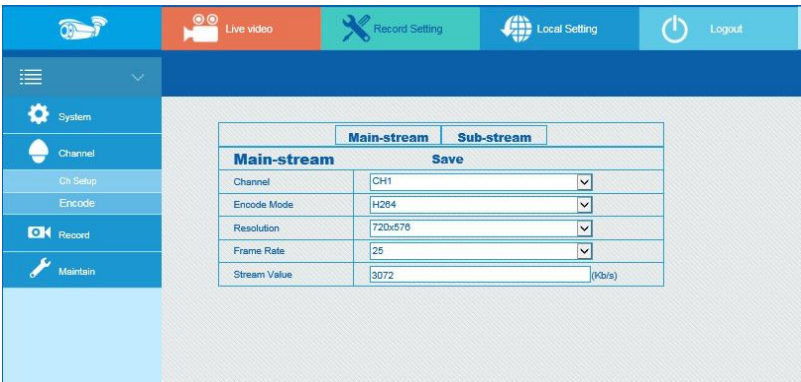


Picture 6-7

You can add or modify channel parameters by channel configuration interface; Click“search”, you can search IPC device with Onvif protocol with the same network segment with NVR; Selecting the channel number on configuration interface, click the IPC information you search, the channel parameters of the interface will change accordingly, the setting channel parameter settings will become effective after you click the “save”

6.4.2.2 Encoding Setting

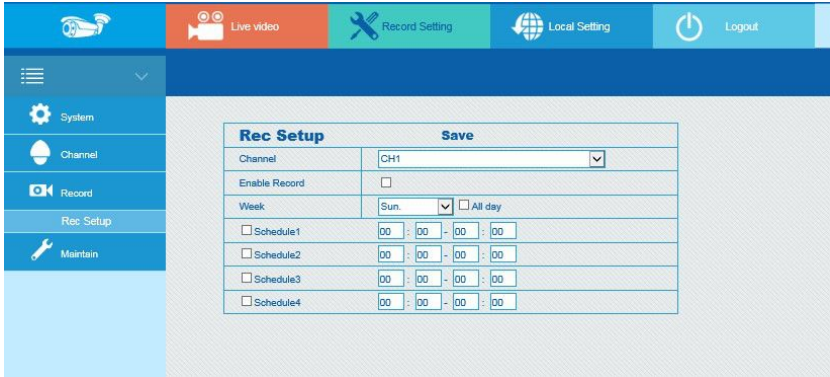
The interface of encoding parameters as below Picture 6-8, relevant parameters are same with NVR setting.



Picture 6-8

You can get parameters of Main-stream and Sub-stream of IPC device of channel access(coding mode, resolution, frame rate, the value of the stream), also can set the value of stream of Main-stream and Sub-stream of IPC device by the interface.

6.4.3 Video Setting



Picture 6-9

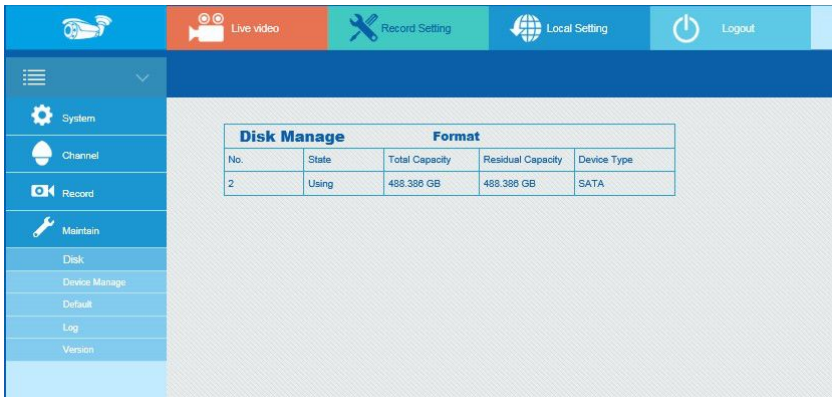
You can set up the channel recording as timetable by the interface, relevant parameters are same with NVR setting.

6.4.4 System Maintenance

Click Maintain, than you can find Disk, Device Manage, Default, Log and Version.

6.4.4.1 Disk Management

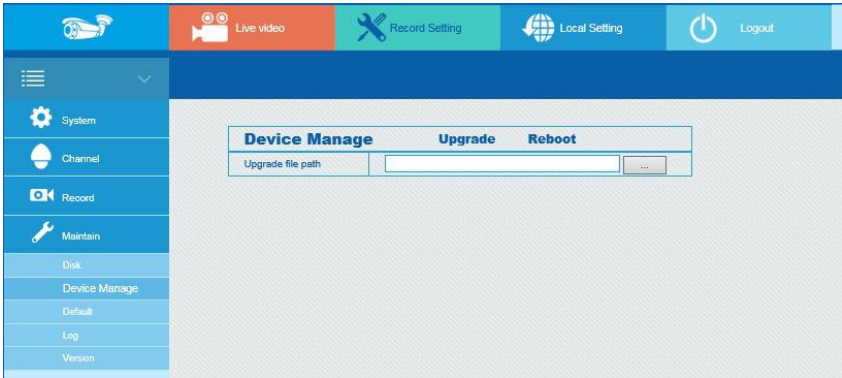
You can format the disk (when you use the hard disk to record first time, you need format the disk first), you can find the information of hard disk (Disk Number, State, Total capacity, Residual Capacity and Device Type), as below Picture 6-10:



Picture 6-10

6.4.4.2 Device Management

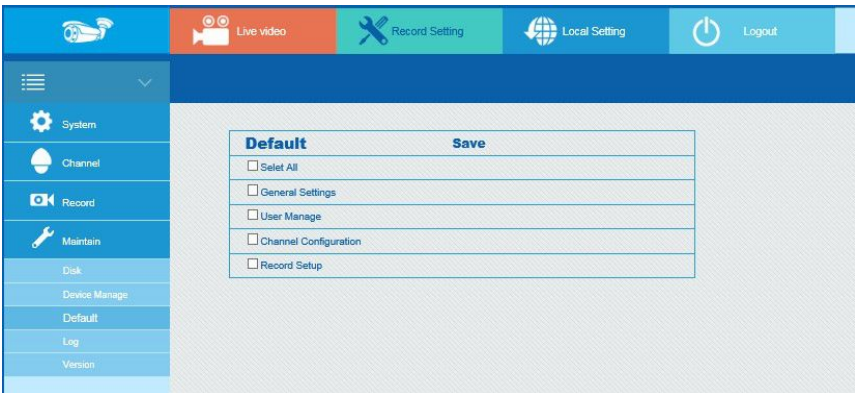
You can restart and update the device of NVR by remoting, as below Picture 6-11:



Picture 6-11

6.4.4.3 Restore Default

You can restore the default parameters of NVR by remoting, the method of setting is same with local setting, as below Picture 6-12:

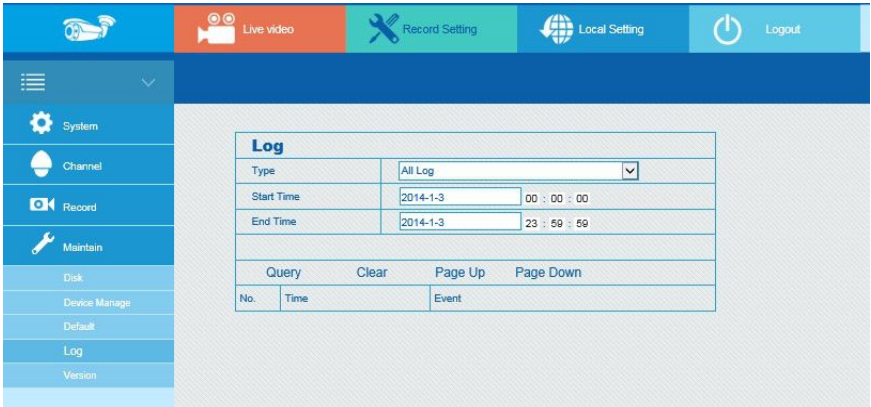


Picture 6-12

6.4.4.4 Journal information

You can find specific journal information by journal query.

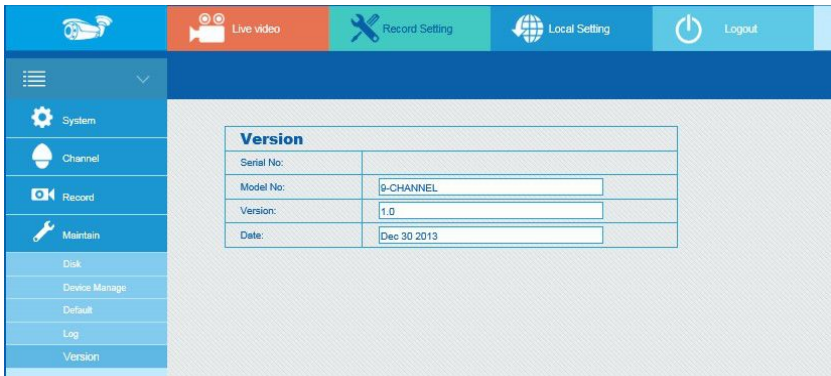
Specific steps: Set up the type and time of the journal you need (as below Picture 6-13, you can recall the calendar to choose the date by clicking the blank frame of start time and begin time), click “query” to query the journal, if there has recordings of journal, it will display on list, you can check all journales by page up/page down.



Picture 6-13

6.4.4.5 Version information

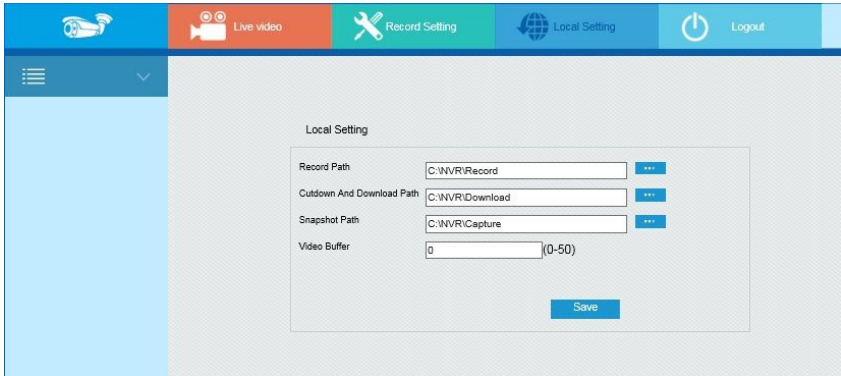
User can check the version information of the system, including serial number of product, model number, version number and version date. As below picture 6-14:



Picture 6-14

6.5 Path Configuration

In path configuration, the user can set up the save path of video file (preview video file) in computer, remote file download and capture image. as below Picture 6-15:



Picture 6-15

6.6 Logout

Click the logout icon



, back to the login screen.

7 Appendix

7.1 Q&A

1. How to do when can't detect the hard disk?

Answer: If the system does not detect the hard disk, kindly please check the data line and the power line of hard disk whether are connected well, whether there is a problem about the interface of hard disk on the motherboard, or kindly please check hard disk whether is supported by the NVR in specification.

2. After modifying password, what can you do when you forget the password?

Answer: When the administrator forget password, kindly please get in touch with our technical staff. The easy to remember and relatively safe password is recommended when you set the password (if you have security needs, kindly please don't try to set simple passwords such as 123).

3. what results will maybe happen due to the heat when NVR is working?

Answer: It will produce some heat when NVR is working, kindly please put the NVR in the place where is safe and ventilated to stop the stability and life of the system be affected due to long-term high temperature of NVR.

4. Whether can use if i install the hard disk drive of computer to NVR?

Answer: If the hard disk you use can be supported by the system of NVR, it can work, but you need note, if the NVR begins to work, all datas in your hard disk will loss.

5. Whether can playback when recording?

Answer: Yes.

6. Whether can remove a part of video recordings of hard disk of NVR?

Answer: Considering the security of document, you can't remove a part of video recording, if you need remove all video recordings, you can format the hard disk.

7. Why can't login to NVR client?

Answer: Kindly please check configuration of network connection whether is right, connection of RJ-45 interface whether is fine, if also can't work, kindly please check whether the user name and password are right.

8. Why can't find any recording information when playback?

Answer: Kindly please check whether the connection of data line of hard disk is good, whether the time of system is changed, whether the query condition that is setted can't save video files. If also have the question after restarting, kindly please check whether the hard disk is damaged.

7.2 Maintenance

1. When DVR shutdowns, kindly please don't turn off the power switch directly, should use the shutdown button of system to avoid data loss or damage of the hard disk.
2. Ensure DVR away from high temperature heat source and place.
3. Remove the dust deposited in the body timing, keep the good ventilation around chassis, it is good for radiating.

-
4. About the audio/video signal line and RS-485 interfaces, kindly please don't hot swap, or these port will be damaged easily.
 5. Check the HDD power cable and data cable of the NVR regularly and look whether they are aging.
 6. Avoid the audio/video signal effected by other circuits and devices as much as possible, prevent the hard disk damaged by electrostatic or induced voltage.