

Centralized Monitoring Management Platform Manual

Contents

1. Products.....	5
1.1. Summary.....	5
1.2. Application Environment.....	5
1.3. Install and uninstall.....	6
2. Centralized Monitoring Management Platform Help.....	6
2.1. Software start.....	6
2.2. Login and Logoff System.....	6
2.3. Add Device.....	7
2.4. Main Interface Instruction.....	9
2.4.1. Image preview operation.....	11
2.4.2. Screen switch.....	13
2.4.3. Context menu.....	13
2.5. Remote operation PTZ.....	14
2.6. Image Management.....	15
2.7. System Setup.....	16
2.7.1. System Setup.....	16
2.7.2. Remote configuration.....	17
2.7.3. Remote Login settings.....	26
2.7.4. Electronic Map.....	27
2.7.5. Alarm relate setting.....	29
2.7.6. Alarm out.....	33
2.8. Recording Features.....	33
2.8.1. Open and close the video.....	33
2.8.2. Remote playback.....	35
2.8.3. Local playback.....	37
2.8.4. Record schedule.....	38
2.8.5. Set collective record.....	40
2.8.6. Switch video file by force.....	41
2.9. Advanced.....	43
2.9.1. Video group setup.....	43
2.9.2. Video group switch.....	44
2.9.3. Video cruise.....	44
2.9.4. TV Wall.....	44
2.9.5. Voice intercom.....	46
2.9.6. View log.....	50
2.9.7. See picture.....	51

1. Products

1.1. Summary

CMSVision is a large-scale network monitoring and management software, distributed network topology, and support for streaming media transmitted directly connected to the network server front-end Video Capture:

- 1, and highly scalable, according to customer demands to expand their control, a control point is a centralized monitoring and management platform.
- 2, in the user access control, streaming media transmitted adoption of a unified user access control, streaming media server user permissions check, directly connecting the server front-end video capture, video capture server-tested for competence.
- 3, focus on monitoring and management platform supports multi-screen images and preview images as round, as well as electronic map image preview and joint operation of the police function.
- 4, in the network to adopt the most advanced technology to complete port in the same network environment than the general quality of the TCP network transmission more efficient, but also support the break-even.
- 5, support on the market today mainstream board and the mainstream DVR-embedded DVR or DVS.
- 6, front-end support remote video capture server configuration, remote video capture playback front of a video file servers, remote-control video capture front-end server Haeundae or other related equipment.
- 7, regular support, as well as video and manual on the server front-end video capture video on mobile alarm linked in a document on video playback, the manner and time of the progress of search and playback in the process of positioning can be arbitrary time intervals operation arbitrary state support Quick Search simultaneously positioning, support cycle broadcast, video editing documents, local amplification and video files can be damaged due to brownout and automatic restoration capabilities.
- 8, TV wall function.
- 9, centralized monitoring and management platform in the front-end server records the alarm log, for real-time alarm log.
- 10, or between management platform to support management platform and front-end servers Video Capture speaking voice and voice broadcasting.

1.2. Application Environment

The configuration of the system requirements are as follows:

Hardware

CPU: P41.7GHz and above
Memory: 256MB and above
Graphics: Geforce 4 64MB and above
Software

OS: Windows2000、Windows XP、windows2003

DX: DirectX8.1 and above

Disk Space

In order to ensure the normal operation of video, hard disk free space may not be less than 80 G.

1.3. Install and uninstall

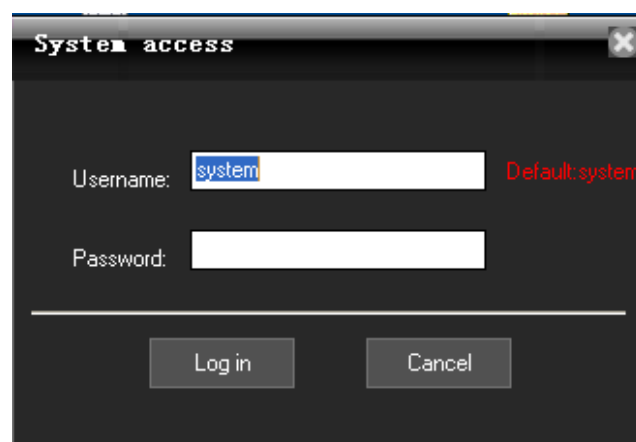
Install and uninstall very simple installation package is a self-extracting file, double-click the mouse directly install icon will be notified by the successful installation. Uninstall program in the Start menu, the selection "Program" -> "Centralized Monitoring Management Platform" -> "Uninstall", will be able to swap unloading procedures.

2. Centralized Monitoring Management Platform Help


2.1. Software start

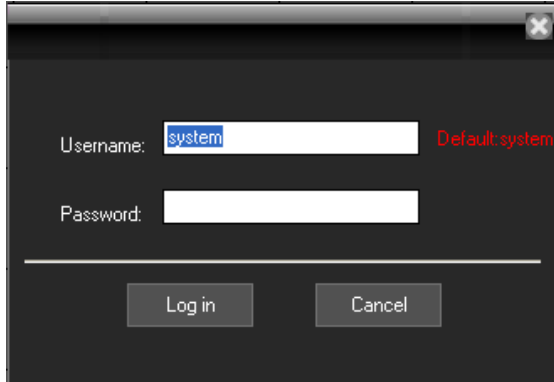
Direct operations in the installation directory under "CMS.exe" document will be launched on monitoring and management platform, or double-clicked desktop shortcut "CMS".

2.2. Login and Logoff System



In the login dialog box, enter the administrator user name (the default is: system) and password, click on the OK button to start the system.


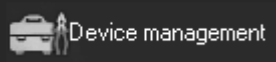

Click the button " in the upper right corner of the main interface, Can pop-up confirmation to exit the dialog box, click "Login" to exit.

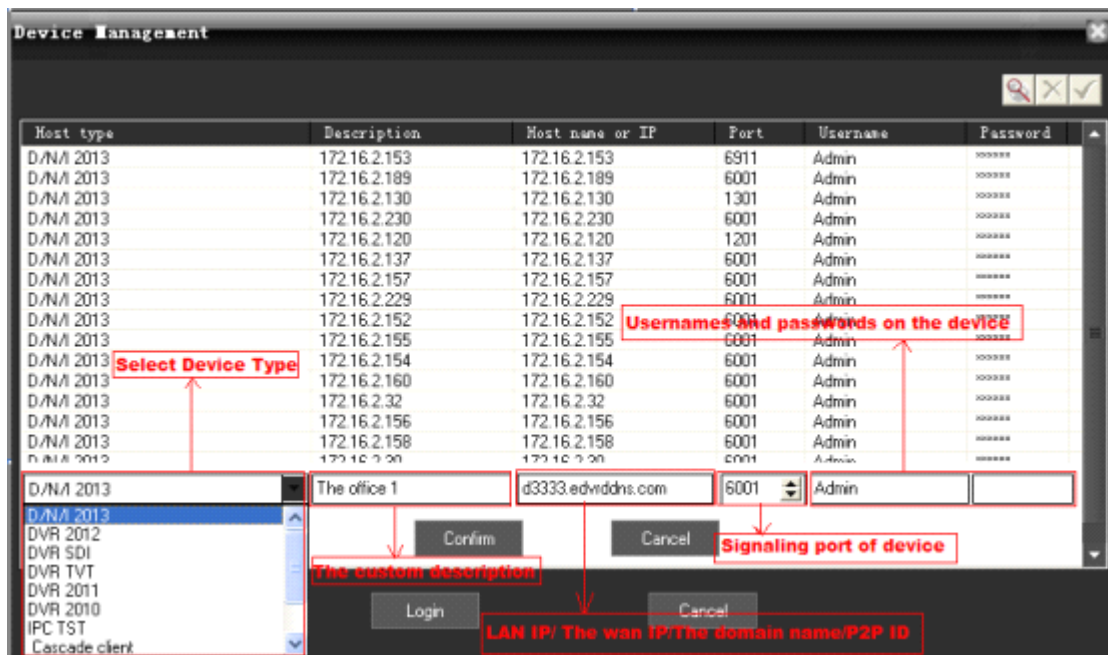


Click the button  Lock  Exit "Exit" in the lower right corner, the pop-up "Exit System" dialog box, then click "Yes" button to exit.

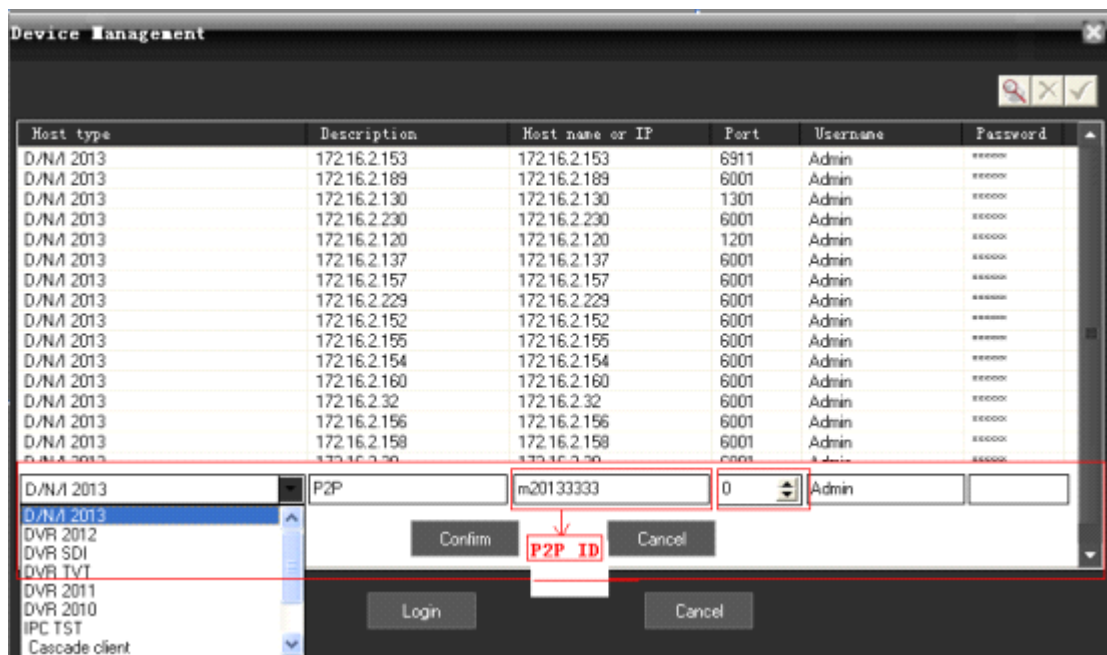
2.3. Add Device

Device type: D/N/I 2013,DVR 2012,DVR 2011,DVR 2010 etc. D/N/I 2013(D means DVR, N means NVR, I means IPC) can automatically be searched and added.:

Enter the main interface, click  on the device list area; or go to menu->System Setup->Device Management, then click , then you will see the pop-up Device Management dialog box, then click  in the pop-up box to add device. Please check the following picture:

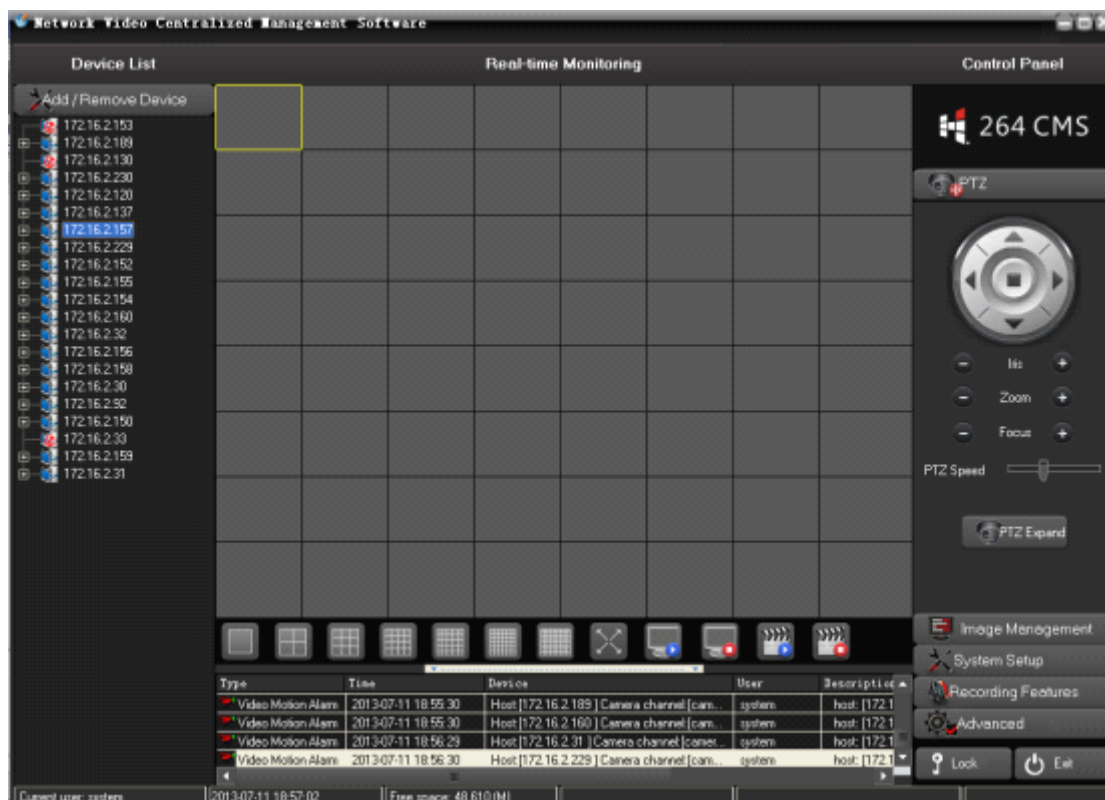


Or you can add the device by clicking Auto Search. Type P2P ID in the host name, and 0 in the port, then it can connect by P2P. Please check the below picture:



Please note: you must choose the corresponding type in host type, self-define the description, type the IP address, domain or P2P ID in host name or IP, and write CMD port of device or 0 if by P2P. The user name and the password are the same as that of the device.

2.4.Main Interface Instruction



At the right of the main interface is the main menu area (ie. Control Panel area).

At the center of the main interface is the Real-time monitoring area.

At the left of the main interface is Device List area.

At the lower part is real-time alarm information display area.

Between the Real-time monitoring area and the real-time alarm information display area is the Split-screen display area.

Menu Structure

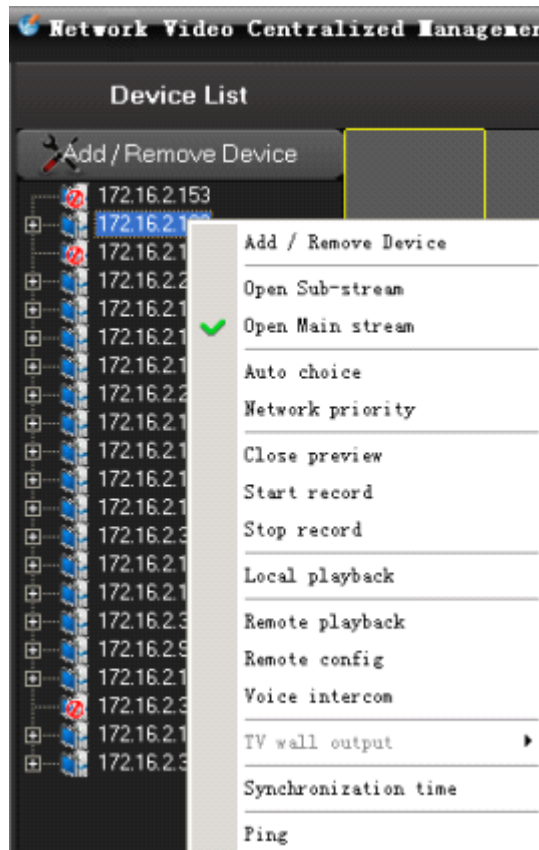
No.	First-level menu	Second-level menu	Third-level menu	Function introduction
1	preview			Click the corresponding button to select preview mode. Tour the preview channels, switch among channels or snapshot live picture. Close / open live preview.

2	PTZ			Move the PTZ toward up, down, right, left by the control panel; adjust the step, zoom, focus, iris of PTZ; set the preset and cruise path; when turn on the cruise function, the PTZ will move according the preset cruise path.
3	Image management			Set brightness, contrast, saturation, hue
4	System setup	Local setup	System setup	Select video storage, video streams; setup start-up OS and pack record.
			User management	Add, delete, and manage the users; setup user name, password and authority
		Remote config	Device config	Setup the device configuration in remote, and keep the setup in local DVR.
		Device management	Add device	Add device; revise the host name, host IP, the user name and password; and delete device
			Revise device	
			Delete device	
		E-map	Pop-up E-map	Users can add or delete cameras in the simulate map and setup E-map alarm.
			Alarm relate E-map	If an alarm event occurs, and the alarm points have been added to the E-map, the map will pop up and flash the corresponding alarm device icon, double-click the icon to open the corresponding video.
		Alarm relate setup	Task	Alarm relate enlarge the window and start recording
schedule	The schedule setup of the alarm relate			
Alarm output device	Short message	Need buy the message module device to send message while alarm		
Close alarm sound		Turn on/off the alarm sound		
5	Recording features	Start record	Select the corresponding channels or devices to start recording	
		Stop record	Select the corresponding channels or devices to stop recording	
		Remote playback	Search the recording files from the remote device	
		Local playback	Search the recording files saved in the computer	
		Recording schedule	Set the recording time in the CMS	

		Set collective record		Set different DVR to record collectively
		Switch video file		If the pack record time is 1 hour, and you need backup or check the recording files that is unpacked, then you can switch video files.
6	advanced	Group setup		Combine or group any channels for cruise or group switch
		Switch group		switch the self-defined video group
		Video cruise		Set in group setup and automatically switch among the selected groups
		TV wall		Additional option, under development
		Voice intercom		The voice intercom among CMS
		View log		Search alarm, login, system operation, network log information
		See picture		Check the snapshot picture
		help		Users' manual

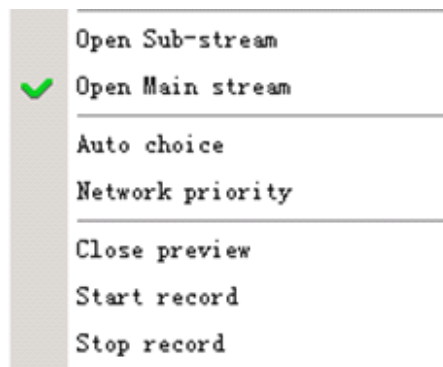
2.4.1. Image preview operation

Right-Click on the device or any camera of the device in the Device List area, then select "Open Sub-stream" or "Open Main stream" menu, can realize the image preview function.



There are three ways to open Preview:

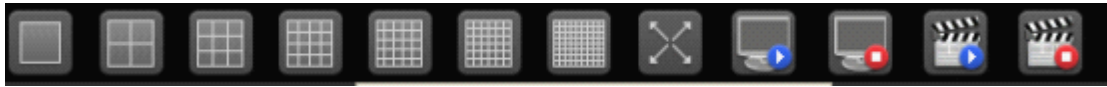
1. Right-click menu "Open Preview."
2. Rejection node to drag the video window on the left.
3. Access nodes in the double-click.



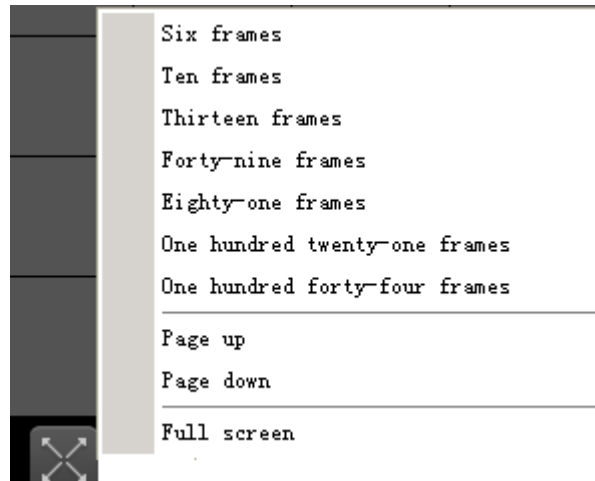
More than four menu items are selected based on the current node for the operation of the image, if selected node is the host, is that the main frame operating below all channels, if the selected channel is only the current channel operation If selected is the streaming media server, it is not gray with the state.

2.4.2 Screen switch

The area between video display area and alarm information display area is the screen switch area.



Click the left mouse button on the icon  can switch more split screen number.




Choose a different split screen button can be switched screen number. "Page up" and "Page down" page and "Full screen"-provided function. (Hint: PageUp and PageDown can turn the pages)



Click the button  can start all preview.



 stop all preview.



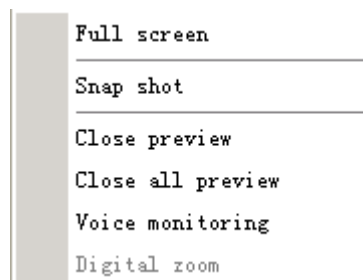
 start all



record.  stop all record.

2.4.3.Context menu

In the video display area, you can do the following operations by right-click the mouse:



Close preview: close the video of the current channel

Close all preview: close the video of all the channels

Voice monitoring: to hear the voice from the live preview

Snapshot: snapshot the picture, and save in the computer. If the pictures are saved in the default folder, then you can check the pictures by going to menu->advanced->see picture

Full screen: full screen

Digital zoom: to zoom any area of video

2.5. Remote operation PTZ

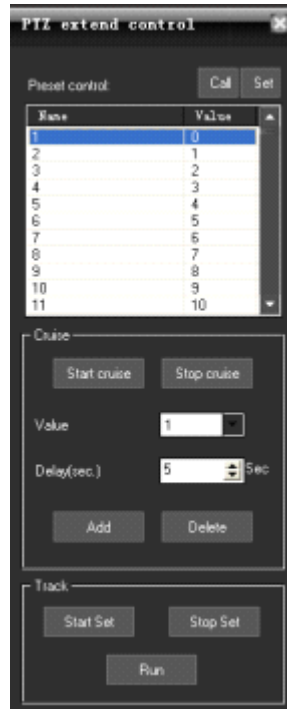
Image window is selected as the current window, if the current window configurations are PTZ, the button was available state:



Click the completion of the operation of the same action. Then click of a button



the pop-up dialog box, calling the corresponding preset points.

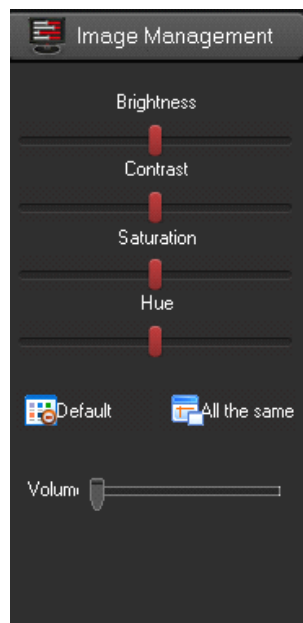


2.6. Image Management


Image window is selected as the current window, point operation "Image Management" button

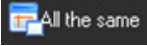


or scroll bar can adjust image brightness and color, image and voice volume can be adjusted.



Note:

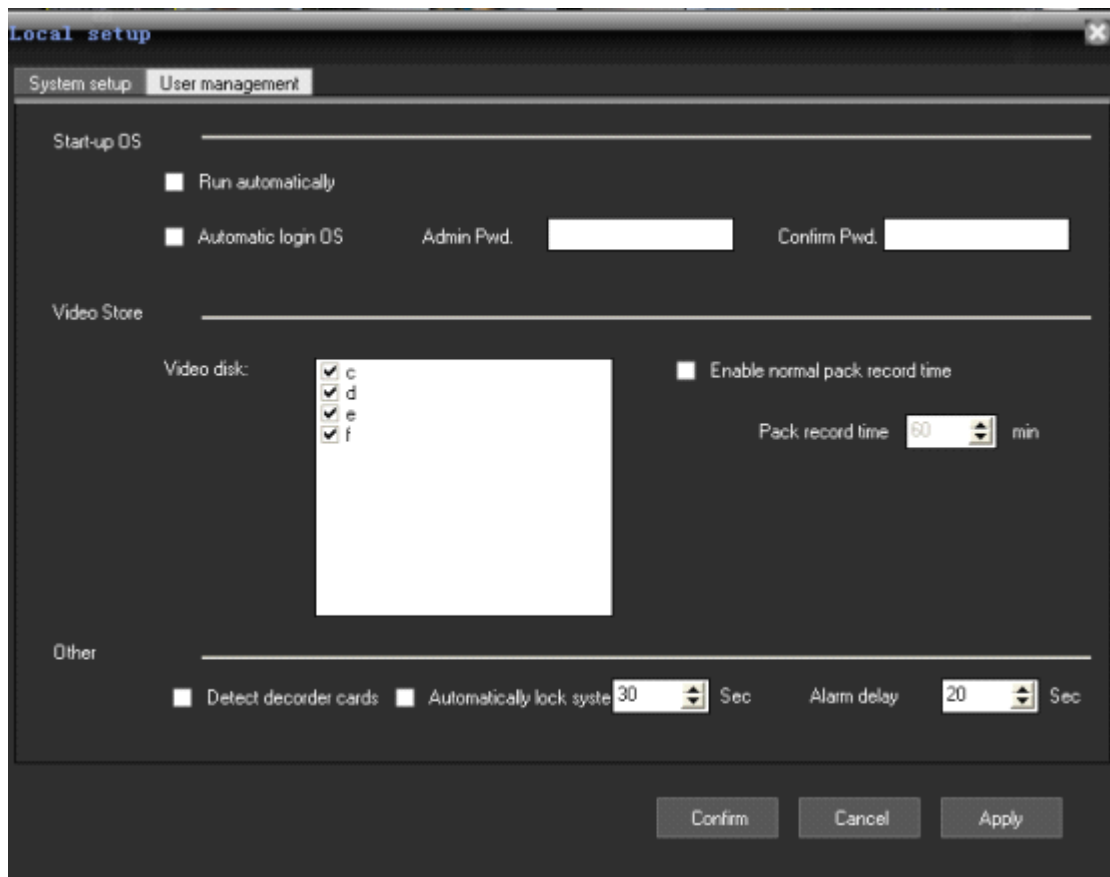
Click the "Default" button , all the configuration about image management will restore the default.

Click the "All same" button , all of the other channels will be set to the same image display status as the current selected channel.

2.7. System Setup

2.7.1 System Setup

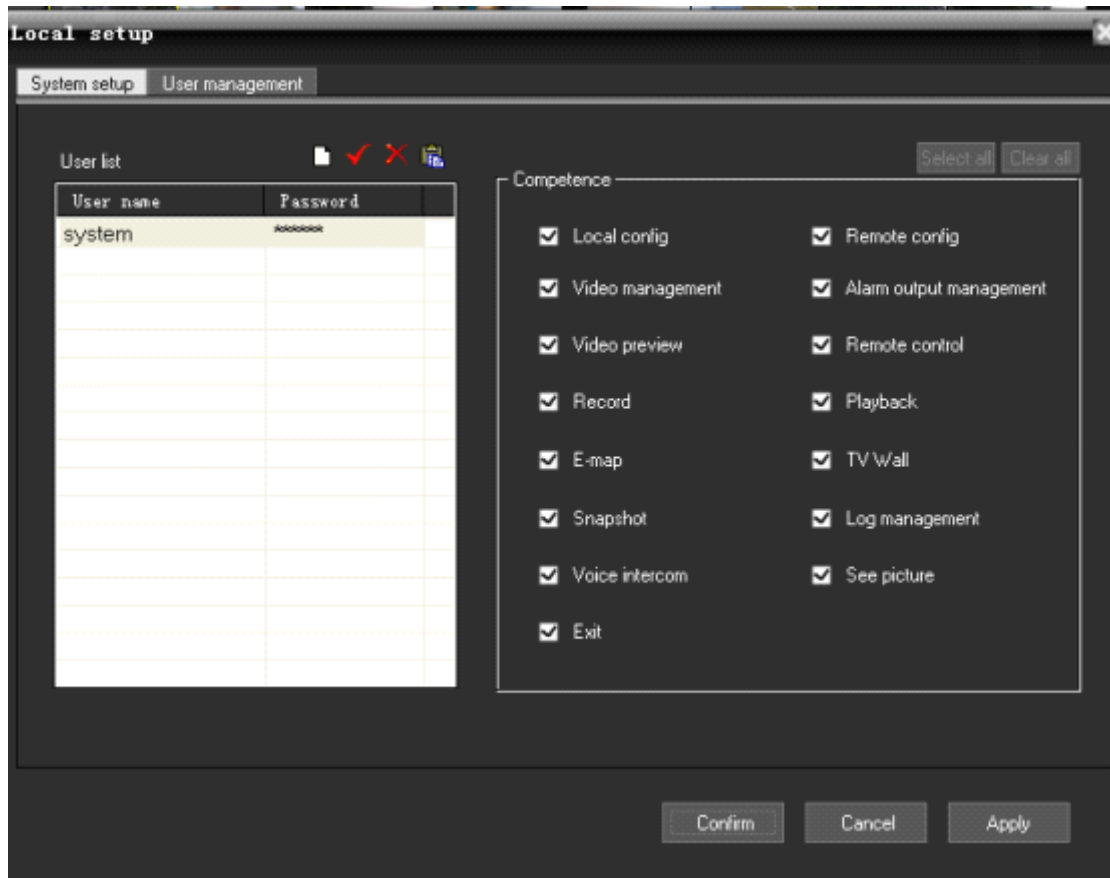
Go to menu->system setup->local setup, and pop-up the below window:






System setup: setup the system according to your habits or requirements

Please note: the system select main stream by default. If you select sub-stream, please restart the software.

User management:

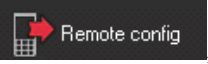


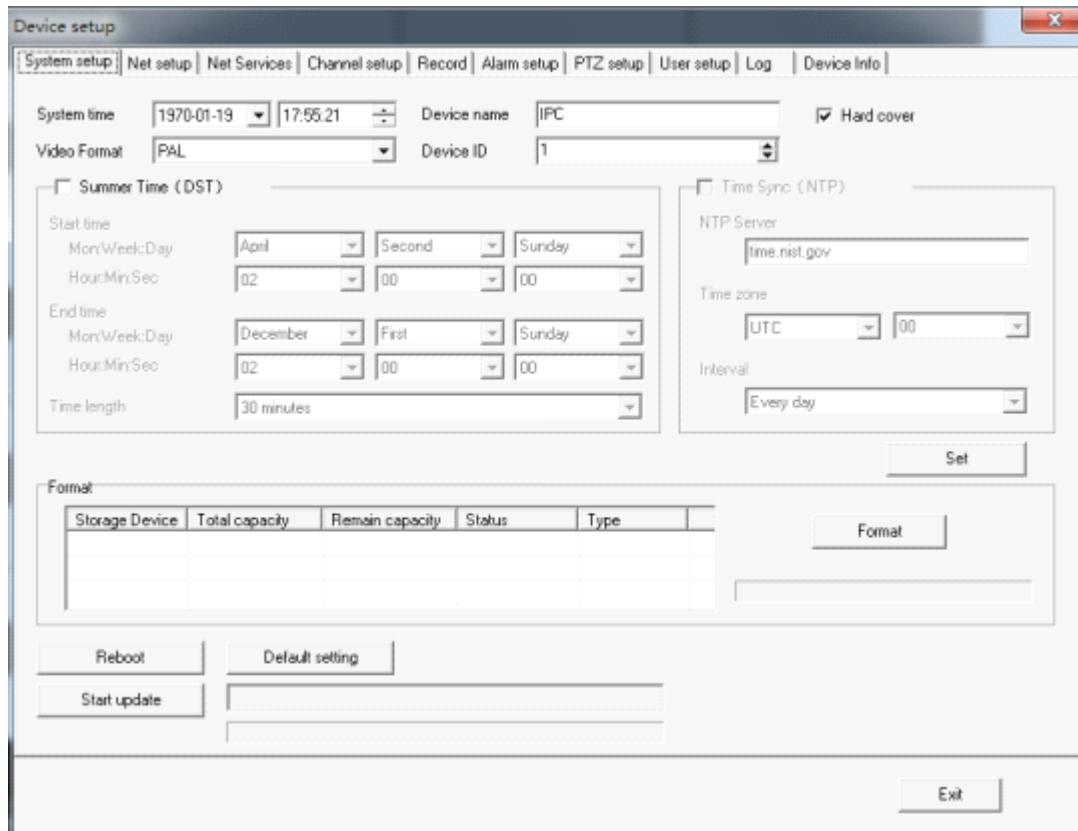
In the users management window, please click  to add user,  to revise the password,  to delete users. The right is the authority that user could have. Only the advanced admin can assign the authority to the new users.

2.7.2. Remote configuration

In the "Device List" area to select a DVR, right-click, pop-up menu, select "Remote Config" menu

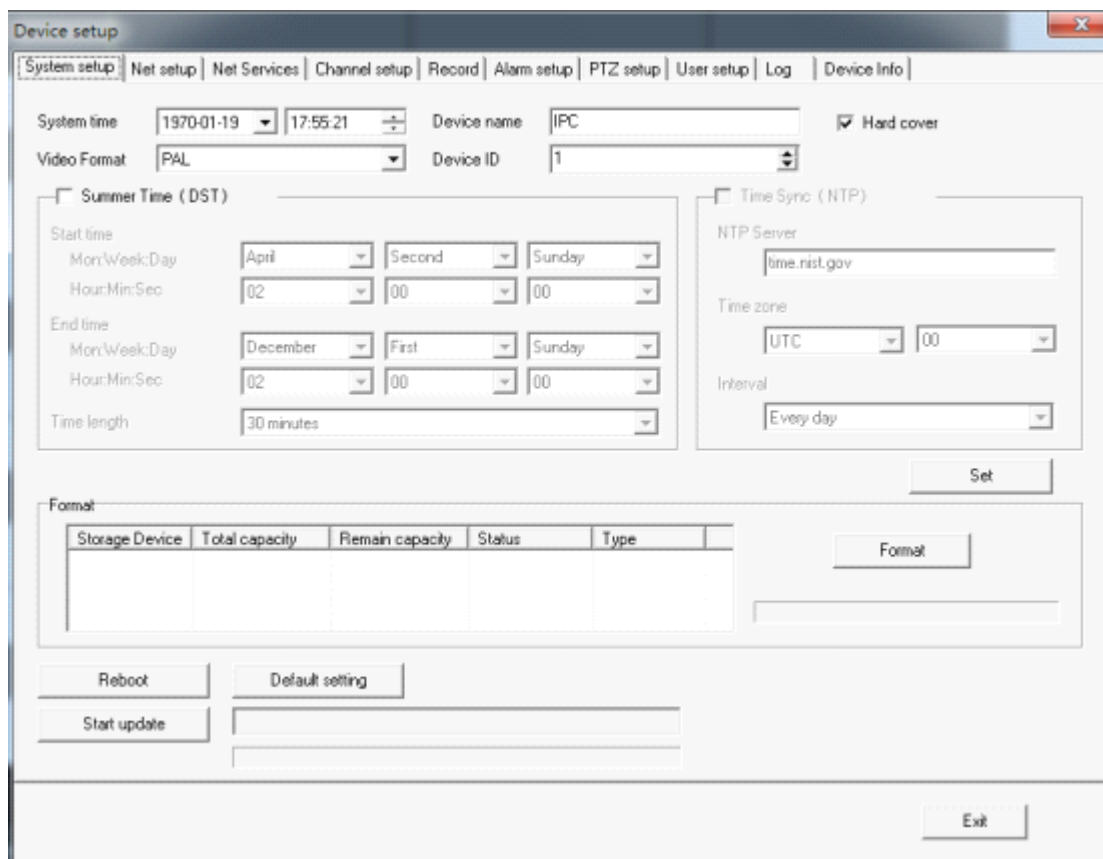
Or in the "Device List" area to select a DVR, then in the main menu, select the "System

Setup" -> "Remote config", click of a button , if it is embedded DVR or pop-up on the corresponding DVS brand Embedded Remote Configuration dialog.

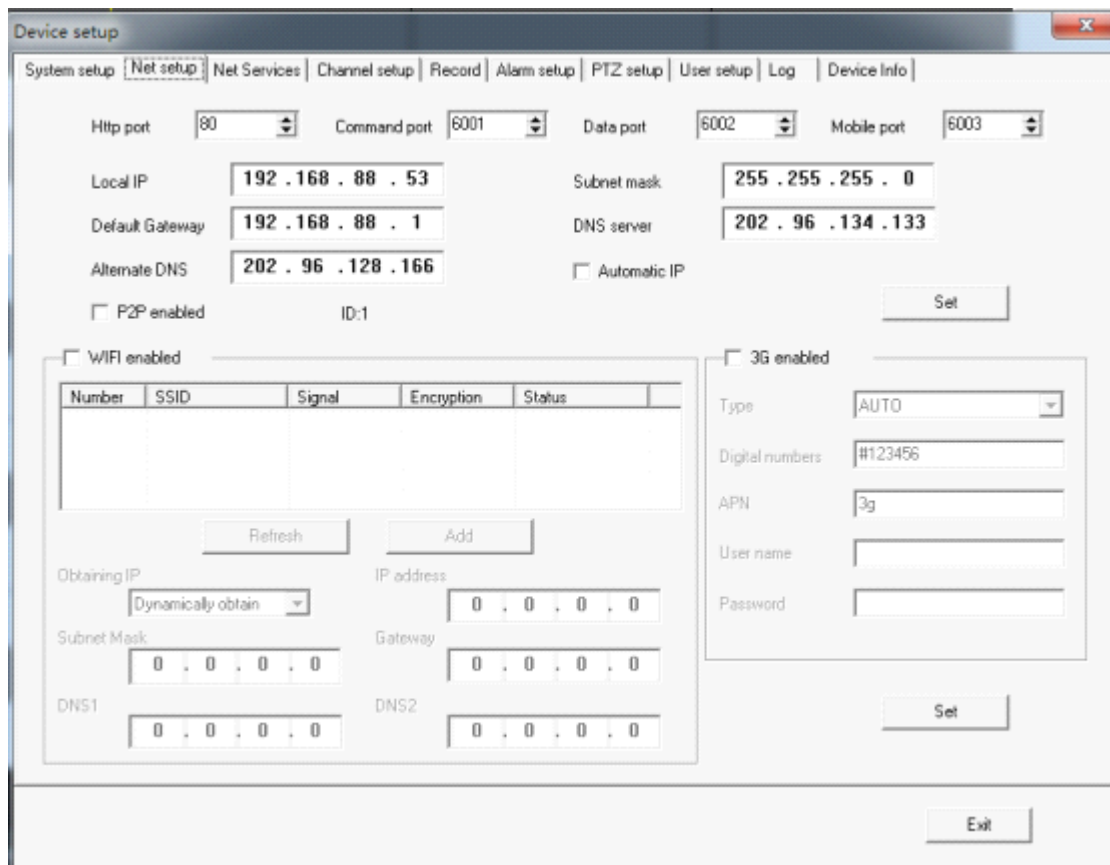


To configure and control the device by client software, select remote config and the device from the devices list.

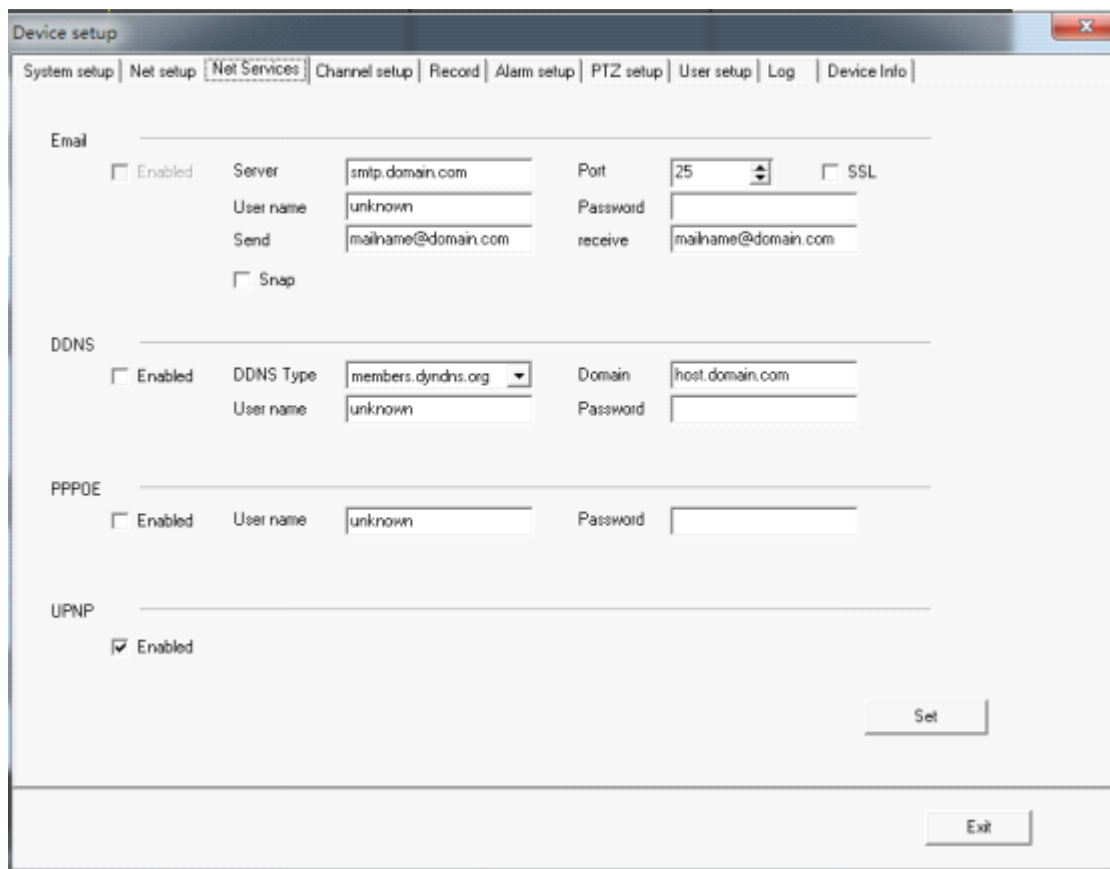
A, system configuration. Set the basic information of device and update the device in remote. Please check the below picture:



B, network setup. Set IP, DNS and so on. Please check the detailed as below picture:

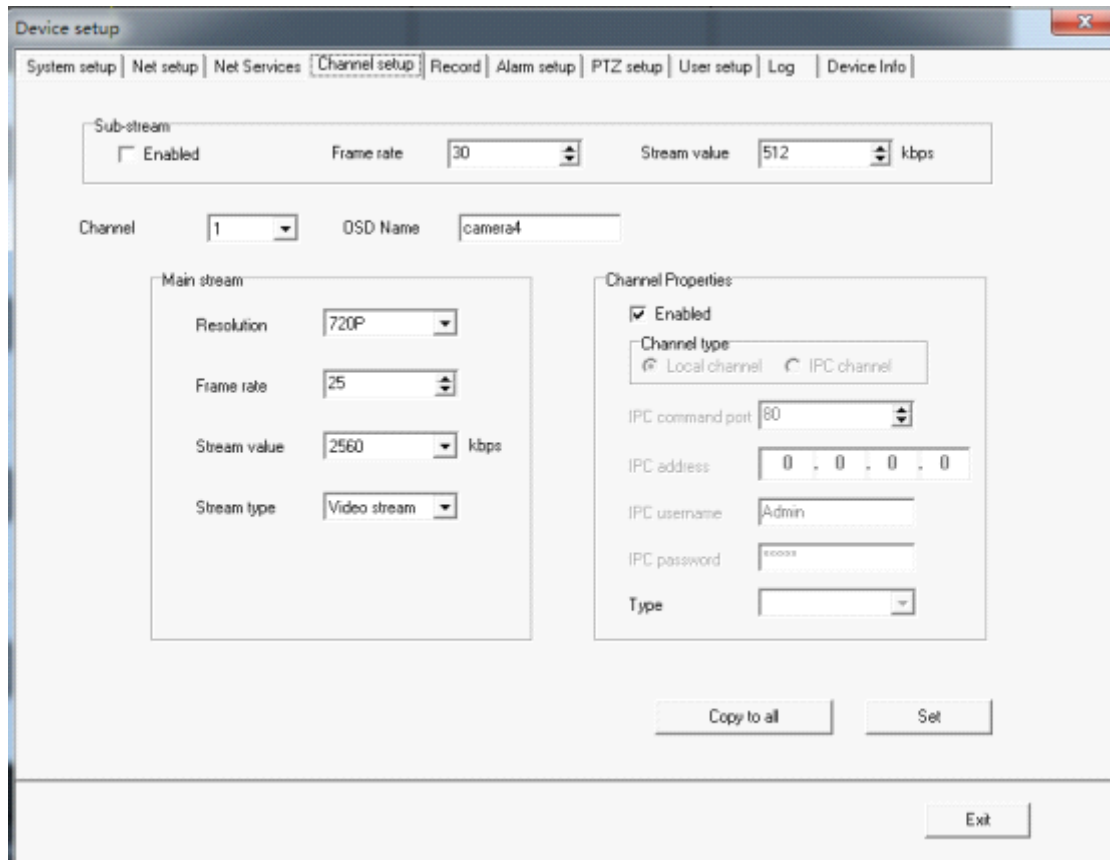


C, network service.set device to visit it by WAN and to send email.Please check the below picture:

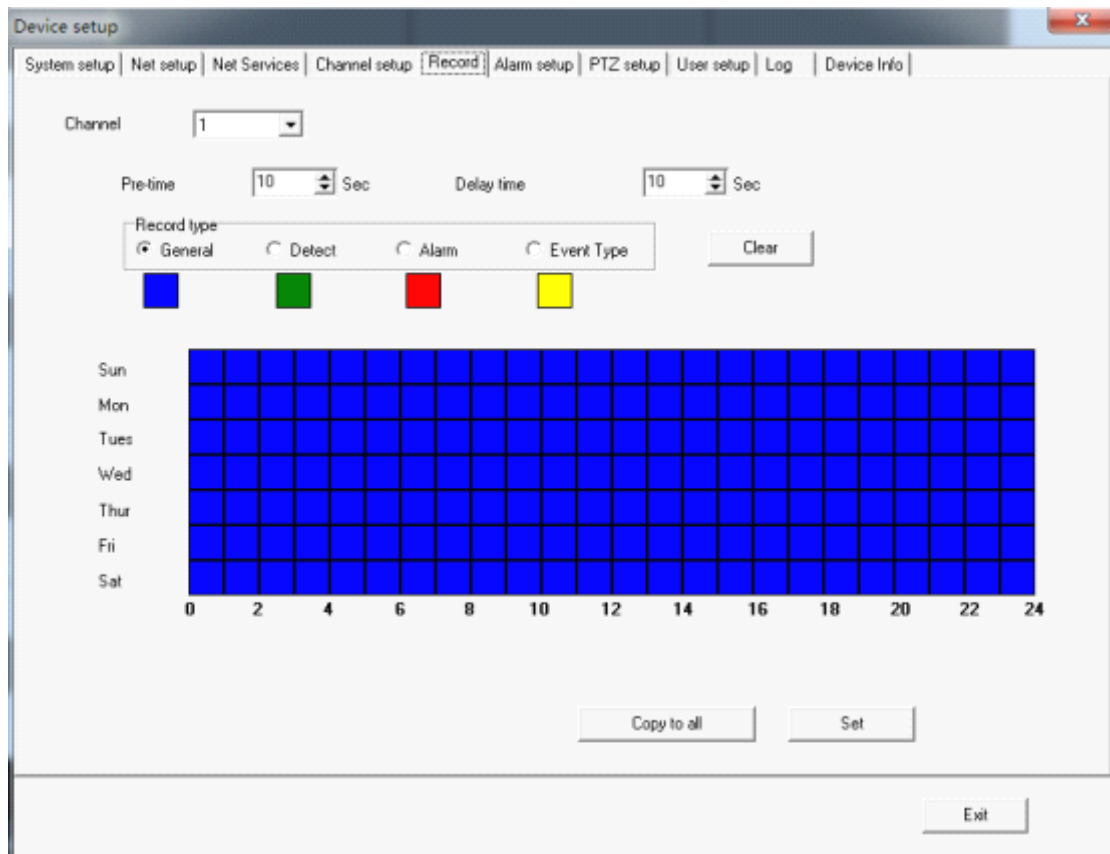


D, channel setup. Set the resolution, frame rate, bit rate and change the channel name.please check

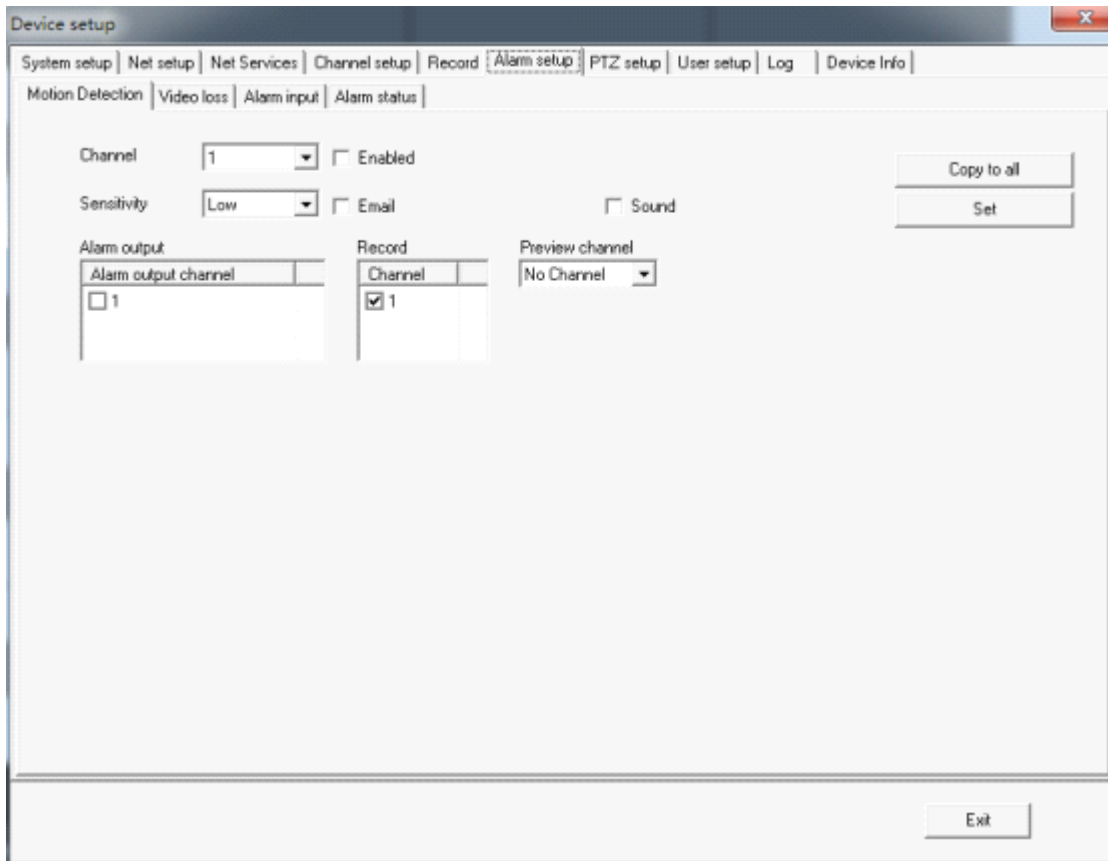
the details as the below picture:



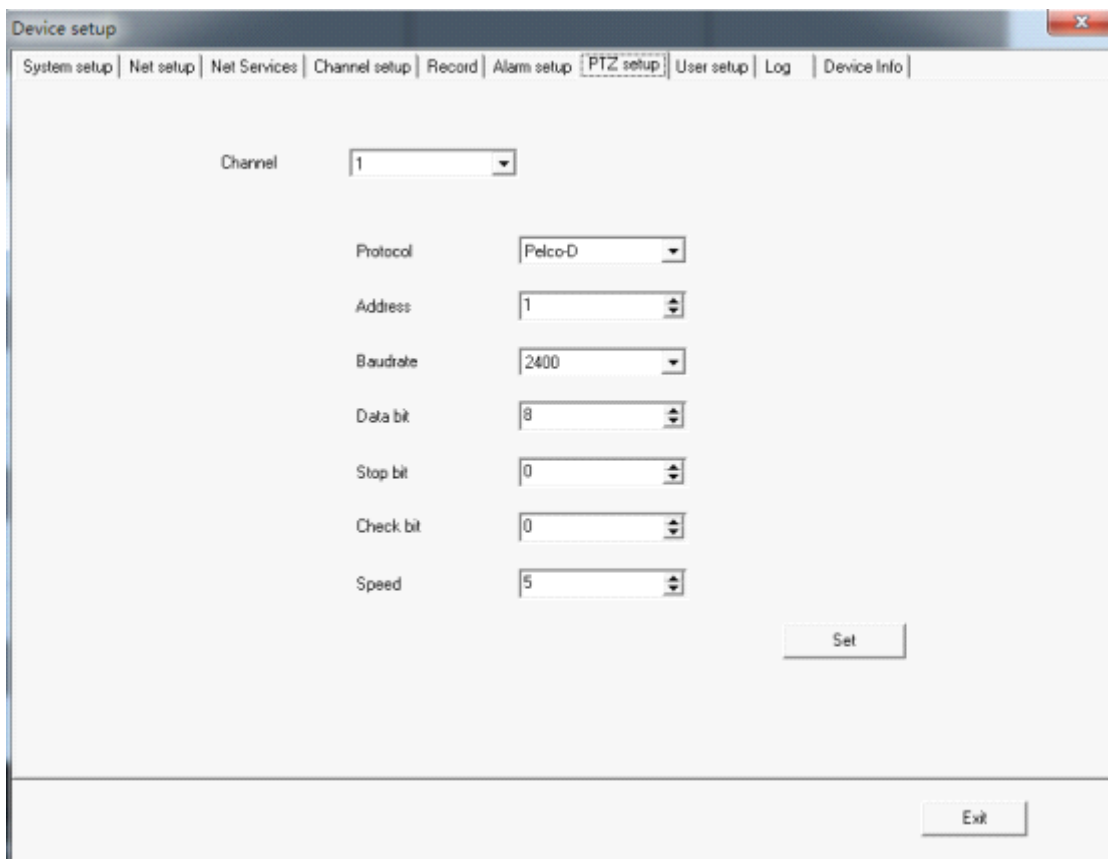
E, record setup. Set the record time, record type. Please check the below picture:



F, alarm setup. Set alarm relate when the corresponding alarm(motion detection, video lost, alarm input) is triggered. Please check the below picture:

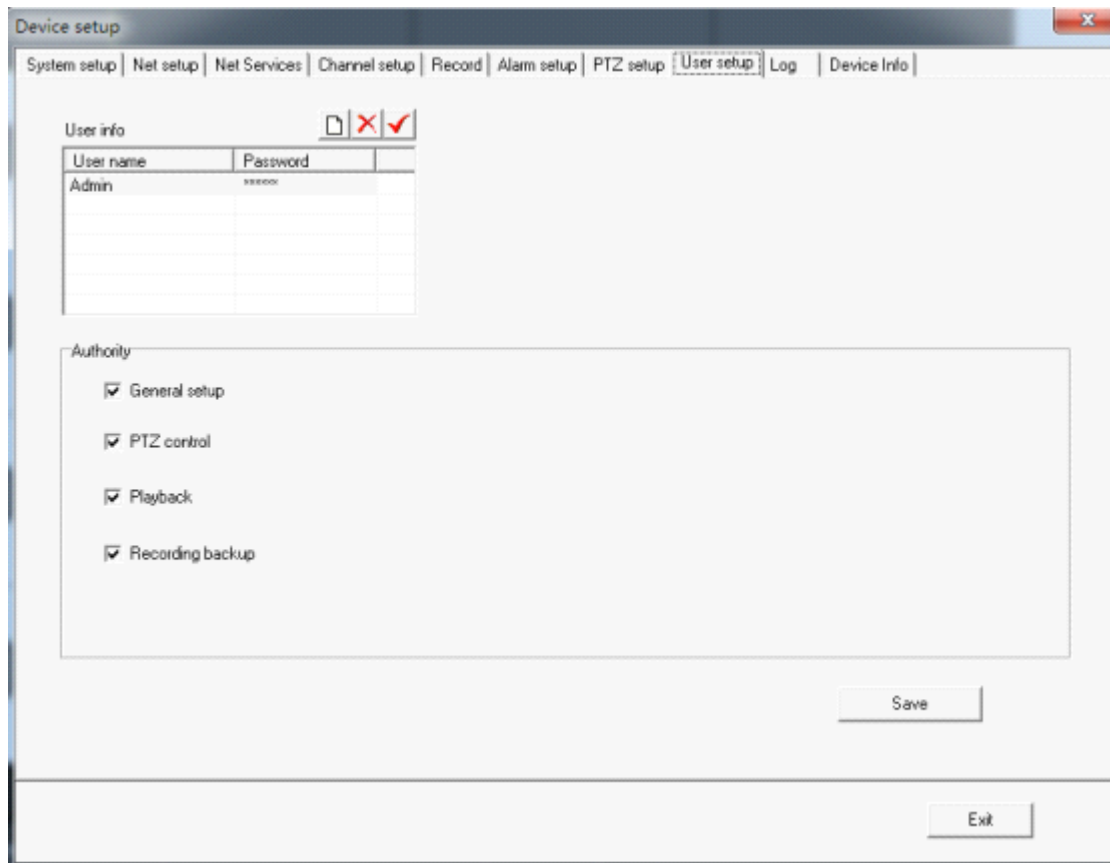


G, PTZ setup. Set the PTZ configuration to control PTZ. Please check the below picture:

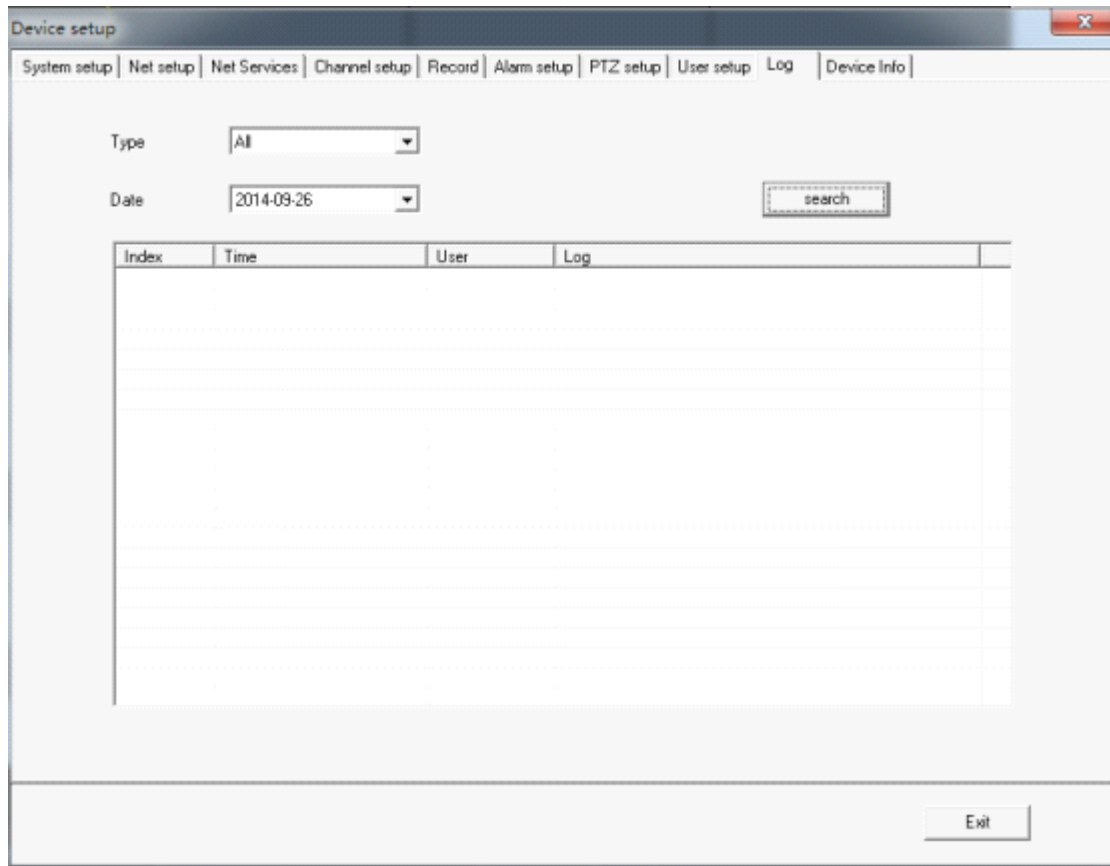


H, user setup. Add, delete, revise users and set the authority of the users. Please check the below

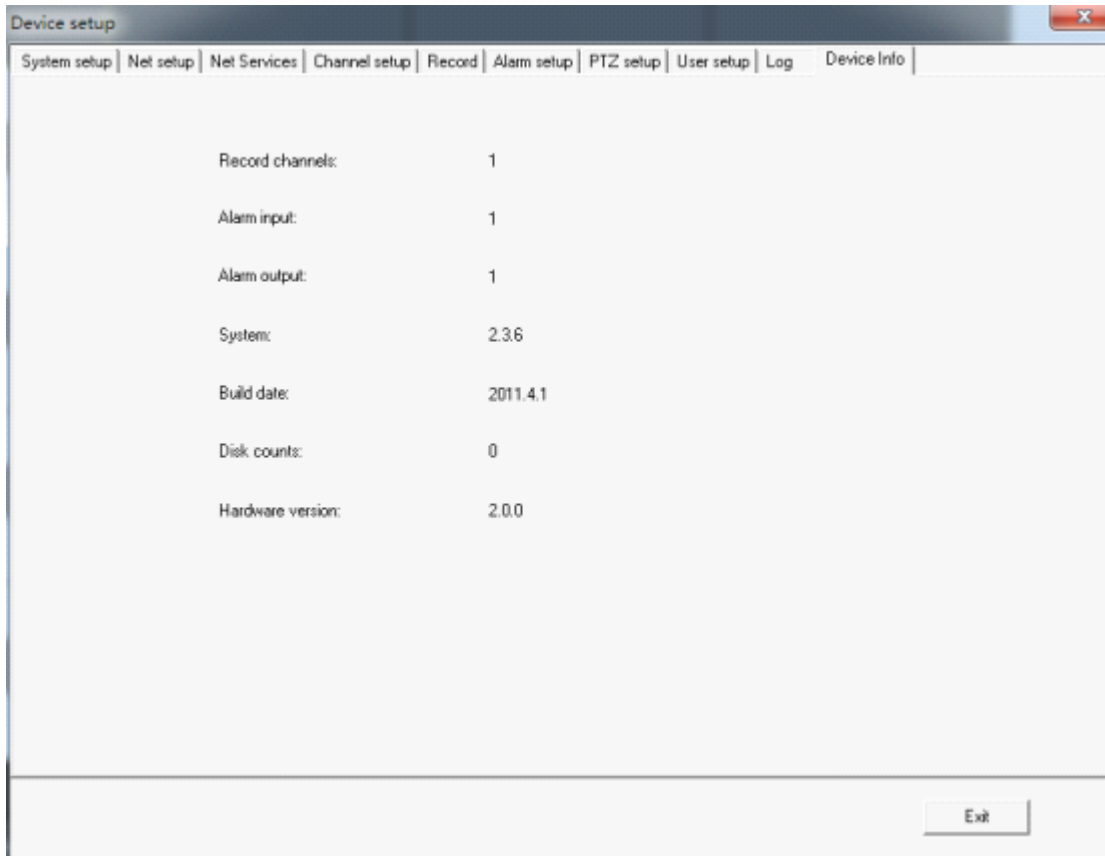
picture:



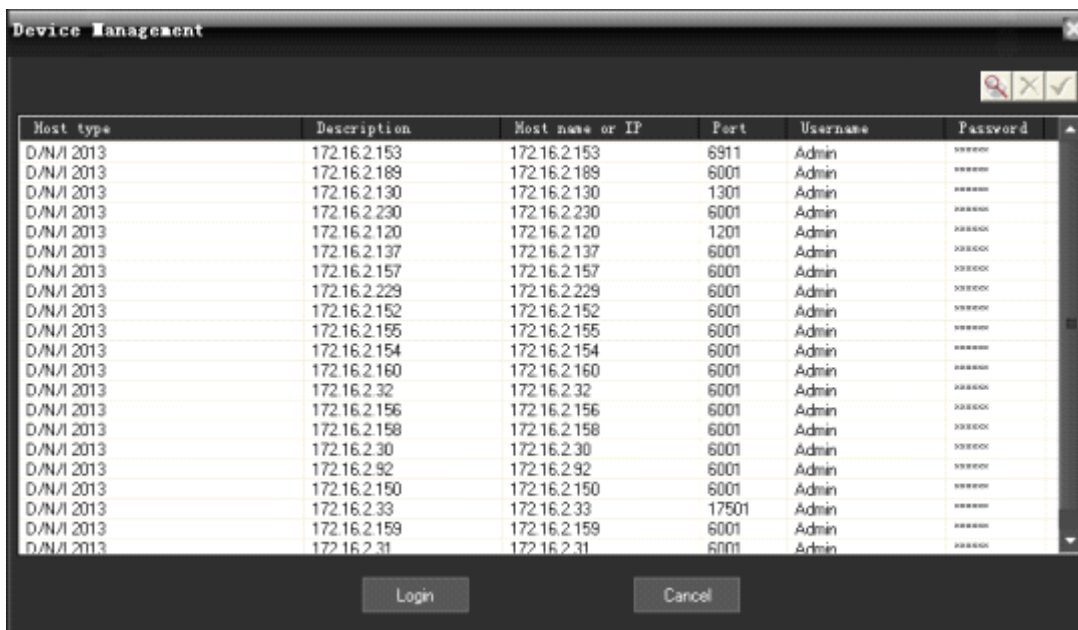
I, log. Search system log and alarm log. Set the date and click search, then you will see the below picture:

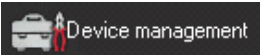




J, device info. Check the record channels, system version and other information. Please check the below picture.




2.7.3. Remote Login settings



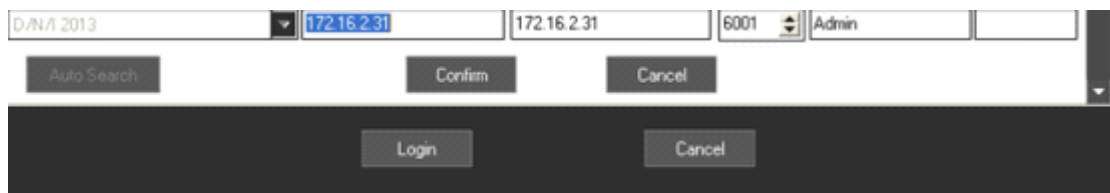
Click on the main menu "System Setup" menu, select "Device Management" menu , or right-clicked in the Device List area, select "Add / Remove Device" , the pop-up Device Management dialog box.

1. Add device information: click of a button  add remote device information.



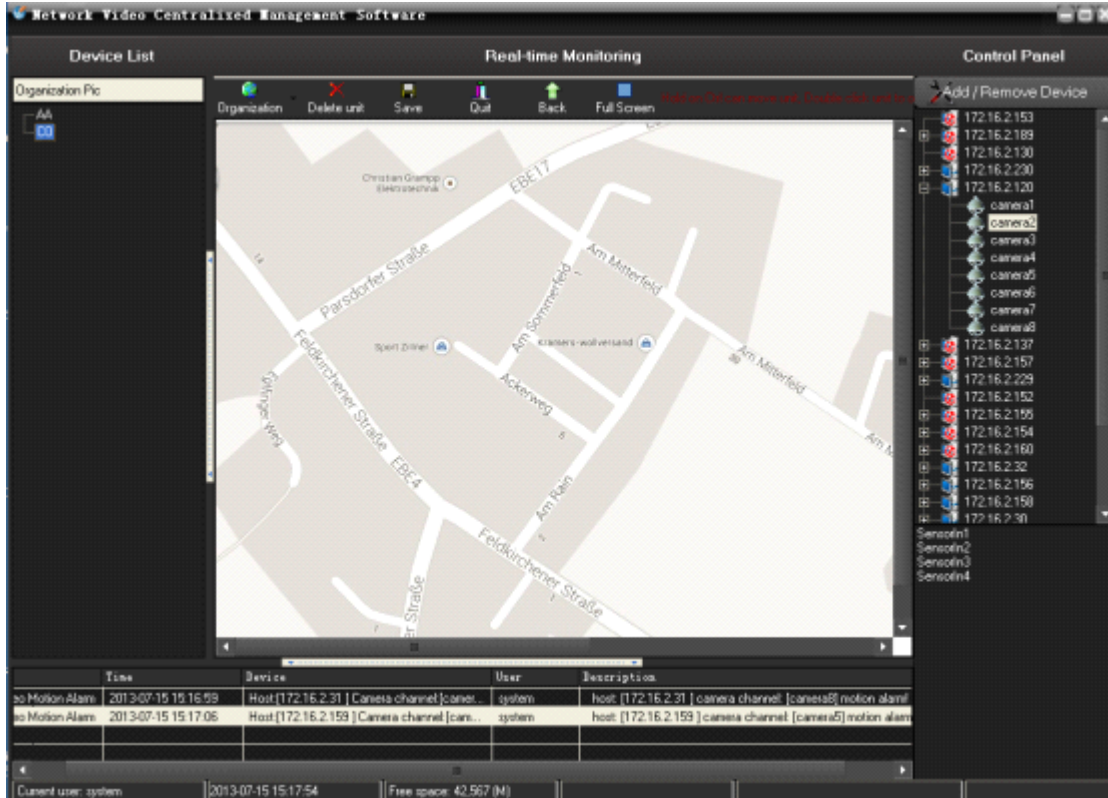
2. Delete device information: click of a button  to delete the selected remote device information.

3. Modify device information: click of a button  remote device information revision.

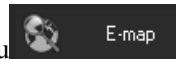


2.7.4. Electronic Map

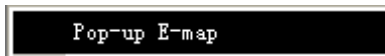
Electronic map is a plan view of simulated field screen. In the electronic map, the user can add or delete the camera and set the E-map alarm in the corresponding position in the E-map. The electronic map intuitively show the location of each camera, and you can find the current monitoring page directly through the map .



Click on the main menu to the "System Setup", then to the "E-map" menu



choose "pop-up electronic map" menu



, can be hidden or pop-up electronic map.

1、 Installation of electronic map: click of a button



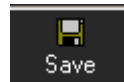
the pop-up menu configuration organizations can add, modify, delete organizational layers.

2、 Delete electronic equipment map: click of a button



to delete the selected map icon equipment.

3、 The preservation of electronic map: click of a button



preserve electronic maps installed.

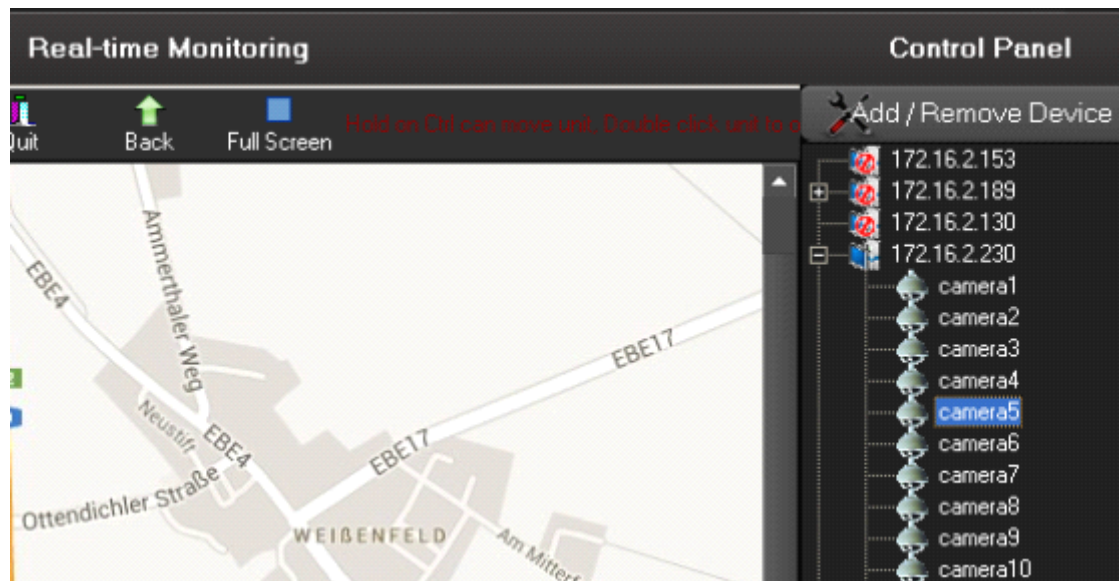
4、 Withdraw from the electronic map: click of a button



hidden electronic map.

5、 Add electronic map equipment: Conventional operating area of the left side of the camera icon dragged on the map, the camera can be added to the

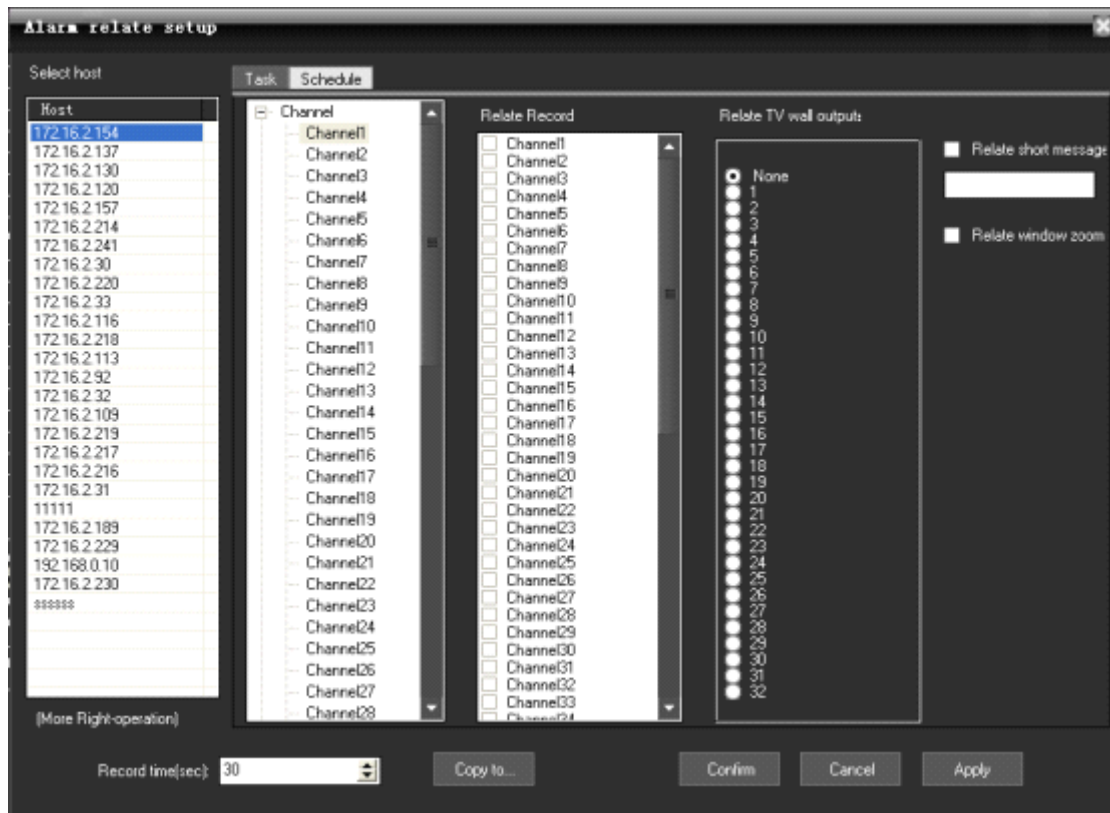
map.

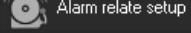


6、 Electronic maps equipment operators: Double-click electronic camera icon on the map, to open the camera image.

7、 Electronic alarm linkage map: `Alarm relate e-map` in the electronic map of the election or switching to an electronic map shows that, if the server front-end video acquisition occurred alarm, and the police point has been added to the electronic map, the map will pop up and flashing icon corresponding alarm equipment , double-click the icon to open the corresponding video.

2.7.5. Alarm relate setting

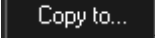


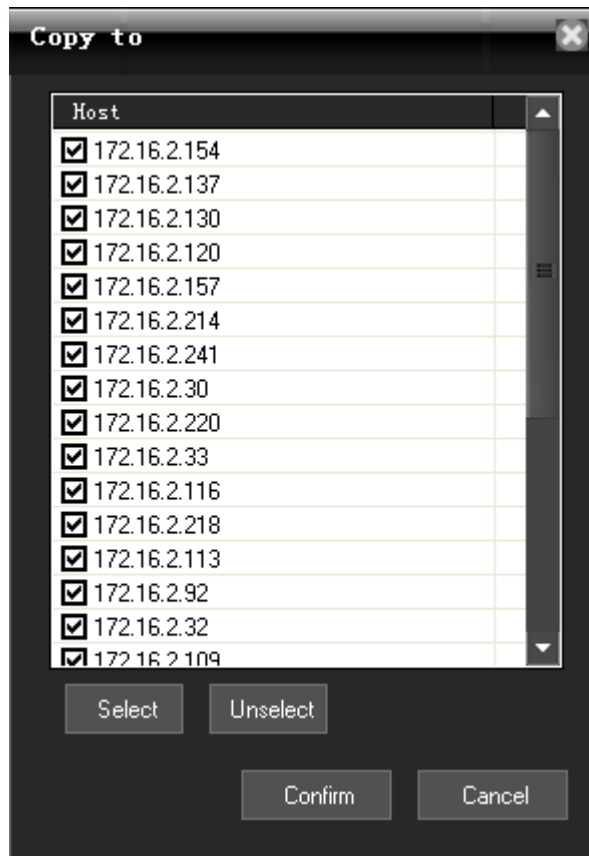
Click on the main menu "System Setup", select "Alarm relate setup" menu  , the pop-up "Alarm relate setup" dialog.

- 1、 cameras channel alarm linkage: Video Capture selected a server, right click, pop-up menu, choose "channel relate," the camera can be given for each video channel automatic alarm correlation can also manually set up video linkage, as long as check linkage channel video camera on the trip.
- 2、 Set up joint police sensor: a video capture selected server, right click, pop-up menu, select "sensor related", each probe can be automatically linked to the police video (such as: "sensor 1" connection "Camera 1" video), can also be manually set up joint video, as long as the check linkage channel video camera on the trip.

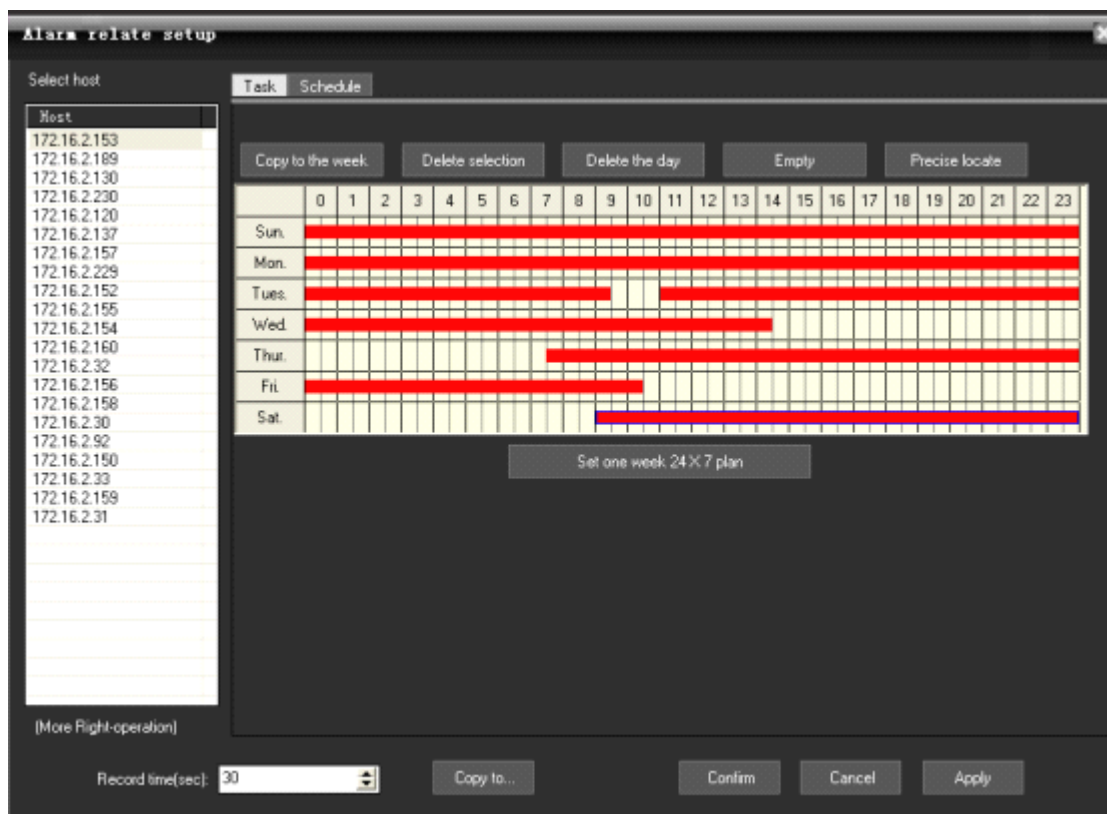
- 3、 Linkage video settings: Laws can be numerical.

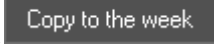


- 4、 Copied to the other server: click of a button  , the pop-up "copy to..." dialog box, check the server, click can be identified will be set up replication to other servers.
- 5、 Save Settings: Setting up good, click can be identified.

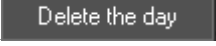


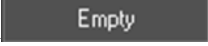
6, Click the above “schedule”, then you can make alarm relate recording schedule according to your time.




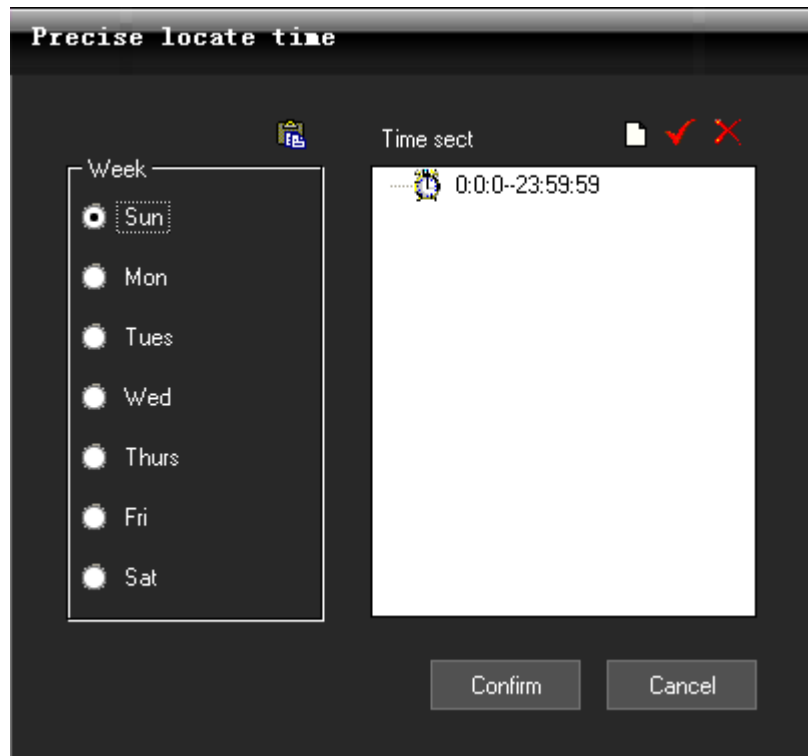
The button  can make the current day's setting copy to all the other days of a week.


The button  can delete the current selected time section.

The button  can delete the current selected day's time section.

The button  can empty all the sections of a week

The button  can accurately set the time to seconds.

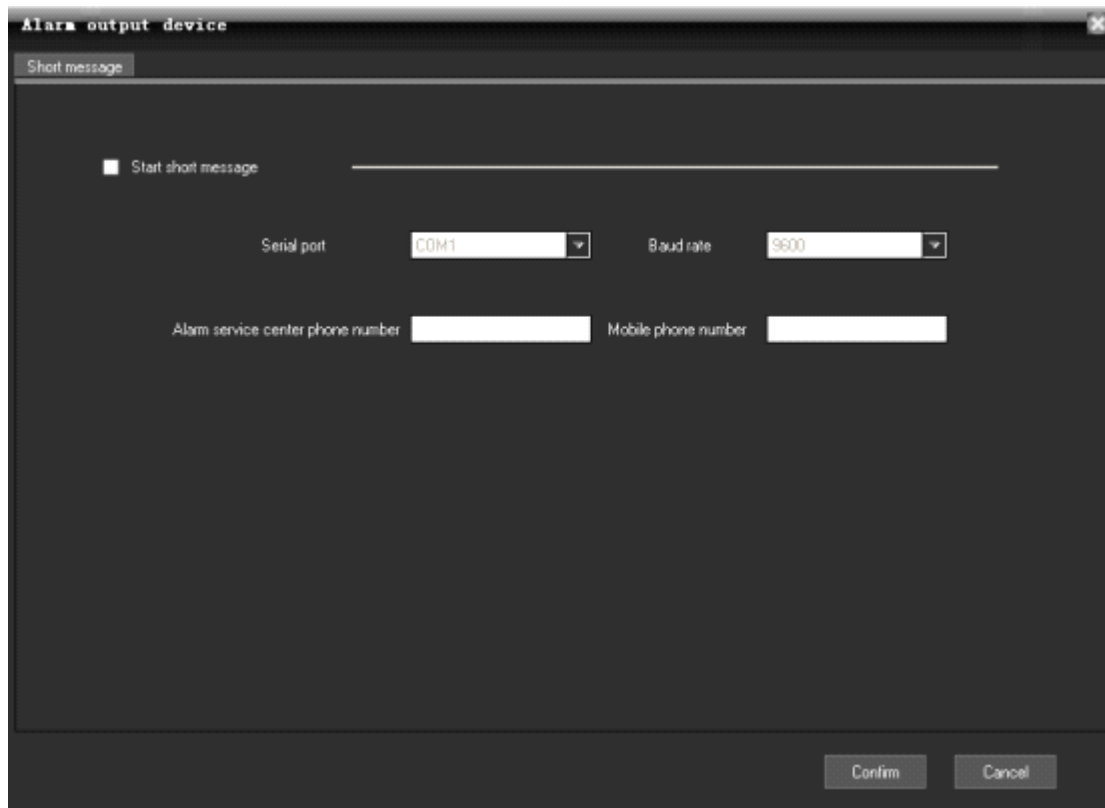


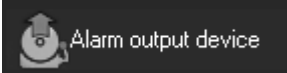
Click the button  Add Time section, enter into the precise position time interface as follows.

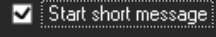
The button : Update Time section.

The button : Delete Time section.

2.7.6. Alarm out





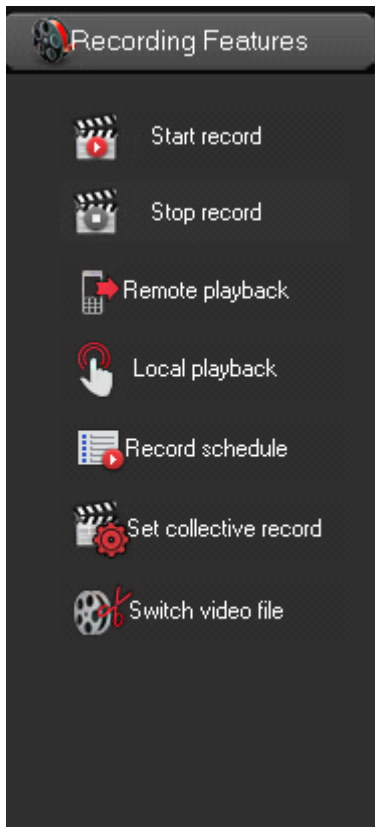
Go to main menu->system setup->alarm output device, or click , then it pop-up the window.

This is not enable by default. You can enable  and write the serial port, bit rate, alarm service center phone number, mobile phone number. After setup, just click “confirm”

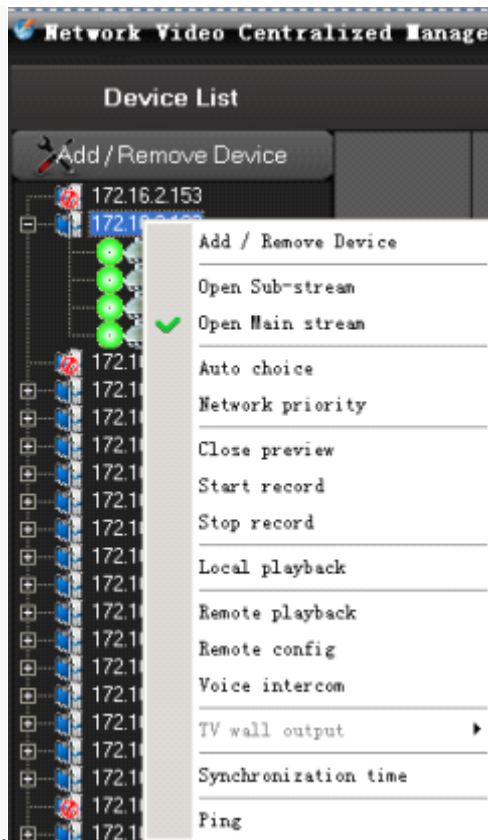
2.8. Recording Features

2.8.1. Open and close the video

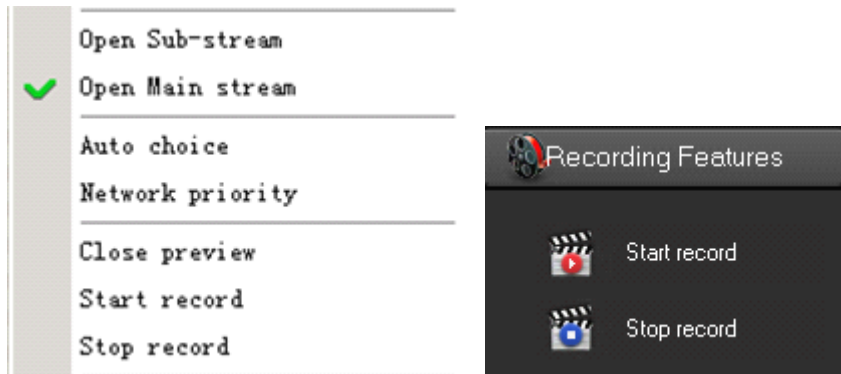
In the "Device List" area, click the right mouse button, the pop-up menu, select "Start record" menu  launched on recording video, select "Stop record" menu  stop recording. If you choose the server, the server started all channel record, if you select the camera access, video channel started.



2. In the equipment list, equipment or channel nodes, right-click menu, choose "start video", can



also open the local video.



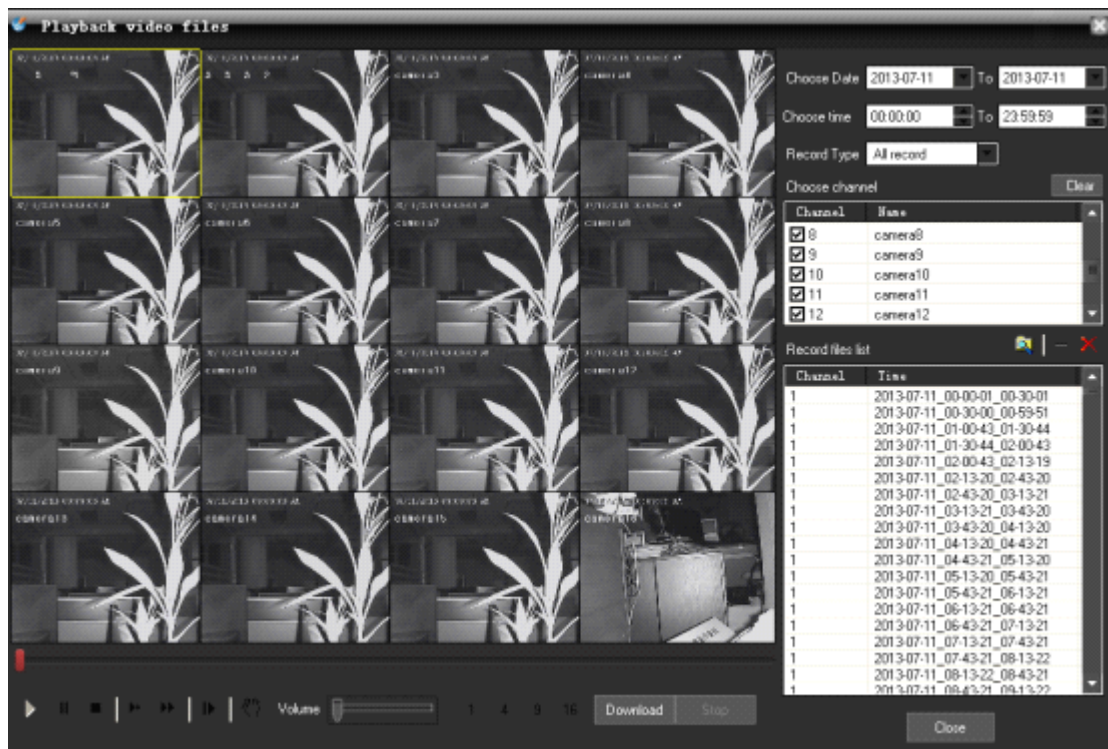
All the menu items above are based on the currently selected node for the operation of, if the selected node is host, all is operating under the corresponding host channel, if the selected channel is the only current channel operation, if the selected is streaming media server, is a state of gray is not available .


2.8.2. Remote playback

In the "Device List" area, select a DVR, right-click, pop-up menu, select "Remote playback" menu

or click of a button **Remote playback**, if it is embedded DVR or DVS


Embedded Remote playback on the pop-up interface, Embedded Remote playback supporting up to one screen , four screen ,nine screen ,sixteen screen playback, each frame of a camera corresponding channel.



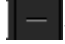

1、 search records files: choose a date , select record types


, then check the cameras to channel playback


Channel	Name
<input checked="" type="checkbox"/> 3	camera3
<input checked="" type="checkbox"/> 4	camera4
<input checked="" type="checkbox"/> 5	camera5
<input checked="" type="checkbox"/> 6	camera6
<input checked="" type="checkbox"/> 7	camera7

, and click the button  search video files, video documents show that in the list

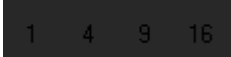

Channel	Time
1	2013-07-11_00-00-01_00-30-01
1	2013-07-11_00-30-00_00-59-51
1	2013-07-11_01-00-43_01-30-44
1	2013-07-11_01-30-44_02-00-43
1	2013-07-11_02-00-43_02-13-19
1	2013-07-11_02-13-20_02-43-20
1	2013-07-11_02-43-20_03-13-21
1	2013-07-11_03-13-21_03-43-20
1	2013-07-11_03-43-20_04-13-20
1	2013-07-11_04-13-20_04-43-21
1	2013-07-11_04-43-21_05-13-20
1	2013-07-11_05-13-20_05-43-21
1	2013-07-11_05-43-21_06-13-21
1	2013-07-11_06-13-21_06-43-21
1	2013-07-11_06-43-21_07-13-21
1	2013-07-11_07-13-21_07-43-21
1	2013-07-11_07-43-21_08-13-22
1	2013-07-11_08-13-22_08-43-21
1	2013-07-11_08-43-21_09-13-22

, click of a button  to delete the selected video files, and click  clear video file list.

2. Playback video files: Double click in the list of documents or click of a button  the records of players selected documents in the playback process click of a


button,  can be pause, stop, slow, fast forward, frame, capture

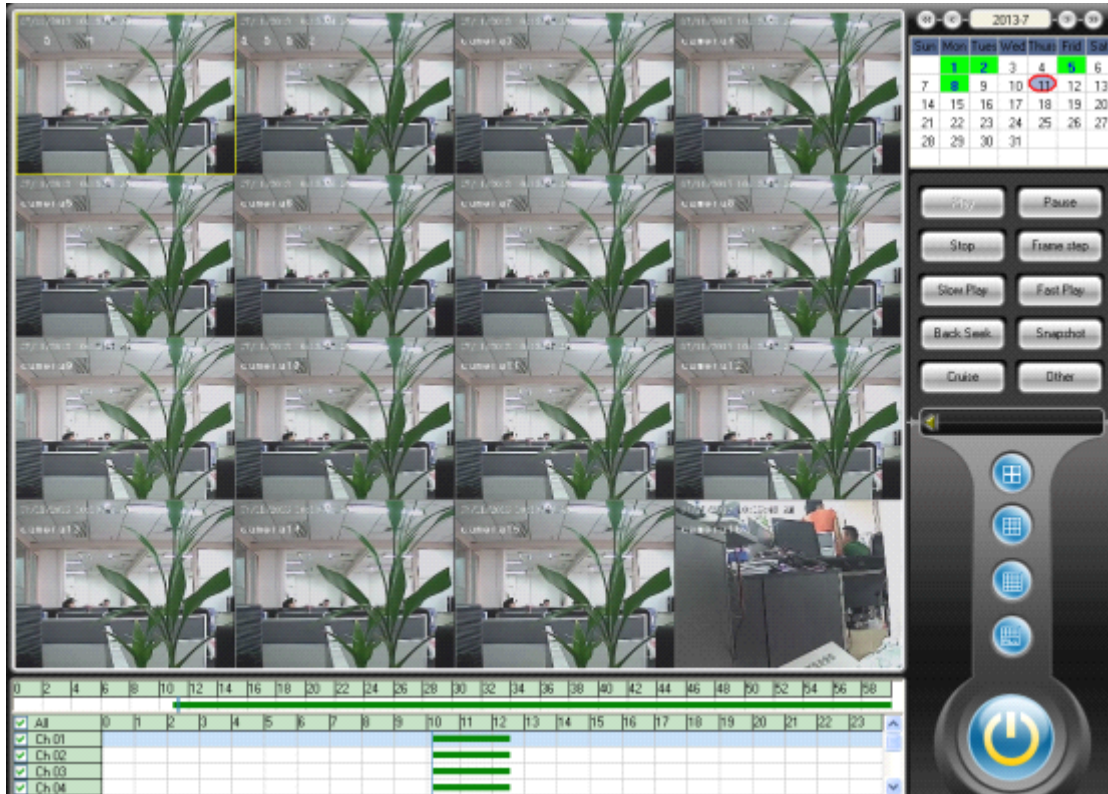
picture , and other functions, drag image volume  can be adjusted.

, when playing back, switch split screen number. Click , can download remote DVR record.

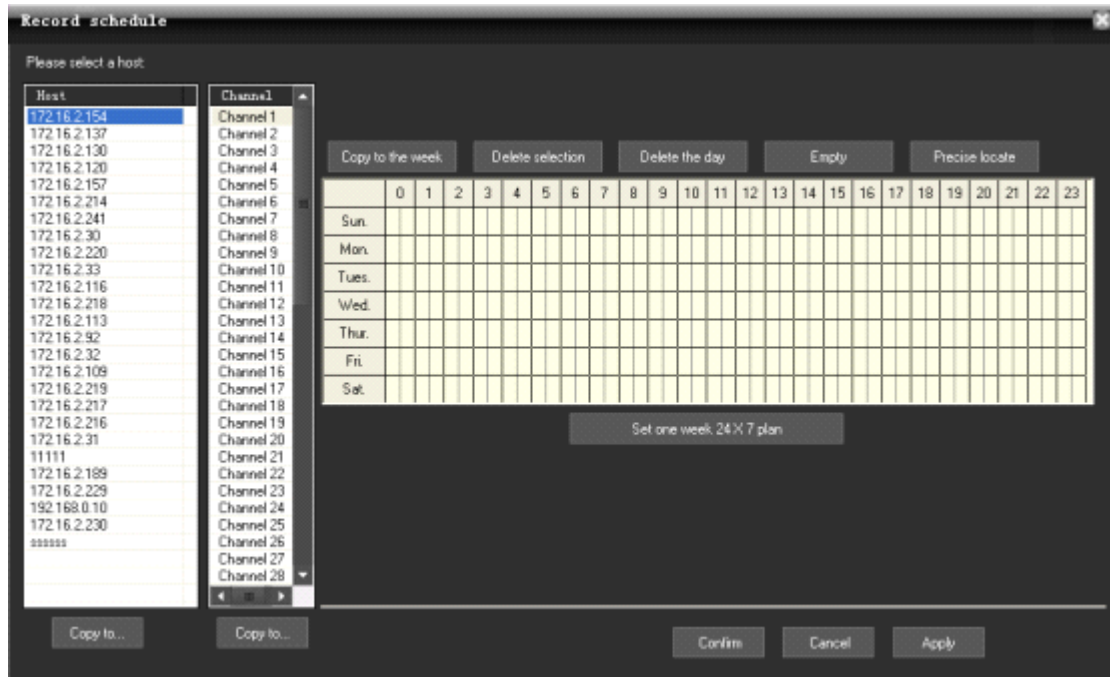
2.8.3. Local playback

In the "Device List" area, click the right mouse button, the pop-up menu, choose "Local playback"

menus  Local playback, pop-up local playback interface.



2.8.4. Record schedule



The button **Set one week 24x7 plan** can set continuous recording all the week.

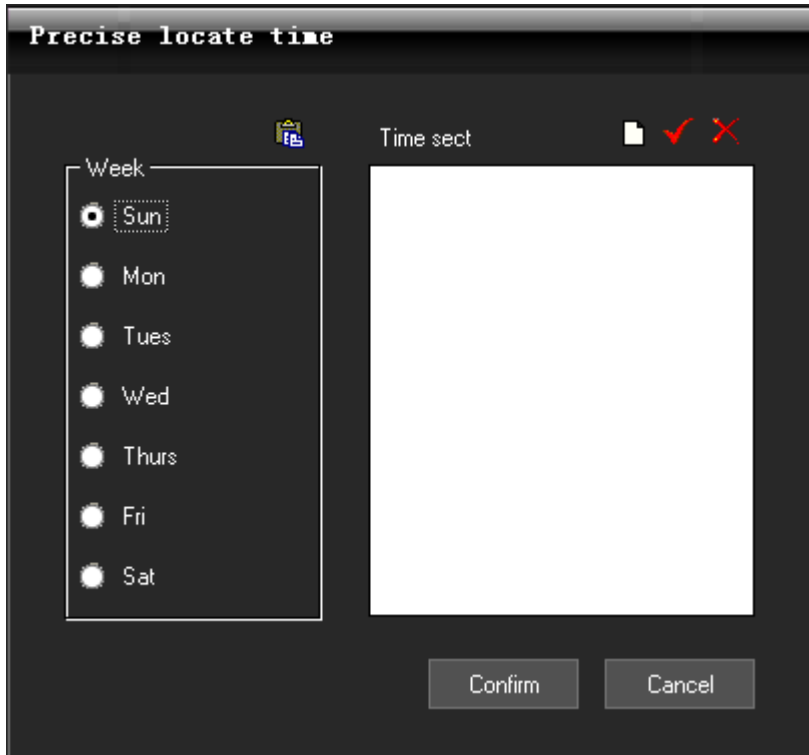
The button **Copy to the week** can make the current day's setting copy to all the other days of a week.


The button **Delete selection** can delete the current selected time section.

The button **Delete the day** can delete the current selected day's time section.

The button **Empty** can empty all the sections of a week

The button **Precise locate** can accurately set the time to seconds.

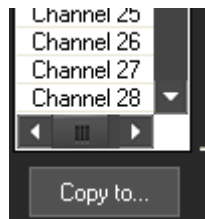


Click the button : Add Time section, enter into the precise position time interface as follows.

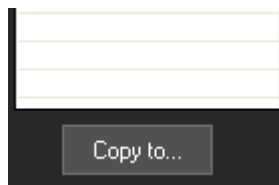
The button : Update Time section.

The button : Delete Time section.

If any other channels are the same recording time setting as the current channel, just need to



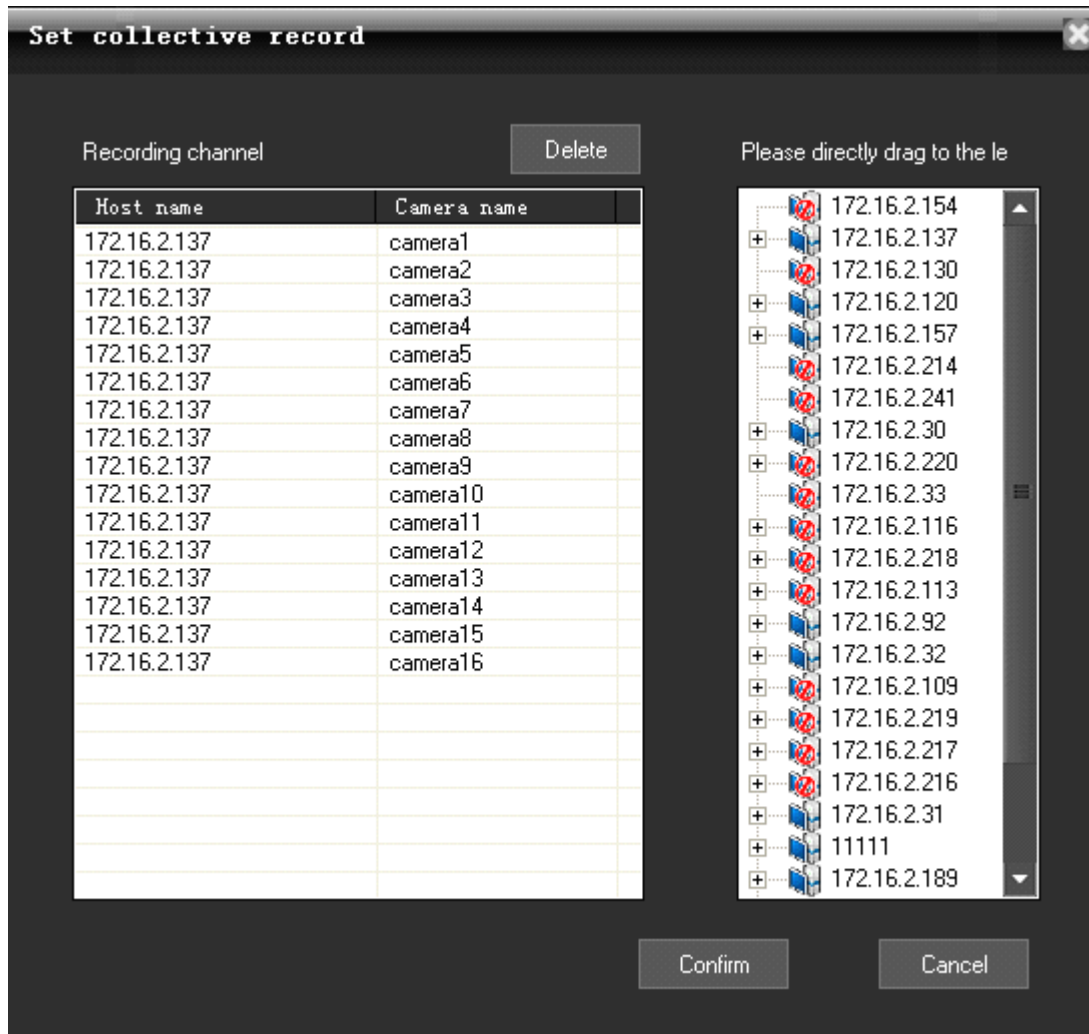
click the button "Copy to..." below the channel list, the pop-up dialog box.




button "Copy to..." below the host list, the pop-up dialog box.

2.8.5. Set collective record

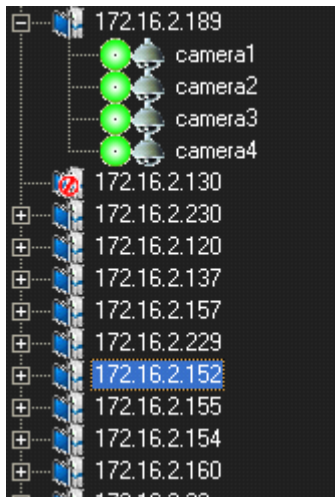
Set collective record



Click the Main menu ->"Recording Features" ->"Set collective record" , the pop-up "Set collective record" dialog box.

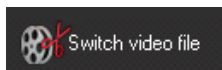
Select the host or some camera under host list, then directly drag to the left Camera list area. Click Confirm button. It needs to manually restart the software, the setting take effect.

Setting collect record function is used among the different channels of the multiple DVR to collect record and replay.

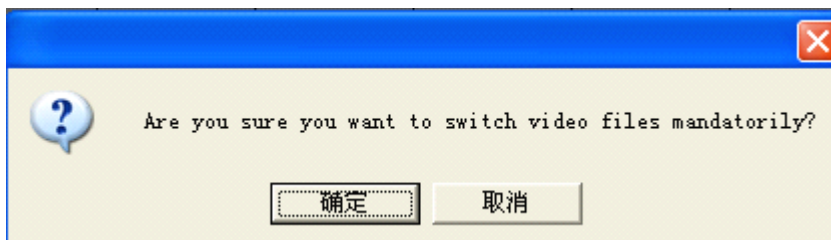


2.8.6. Switch video file by force

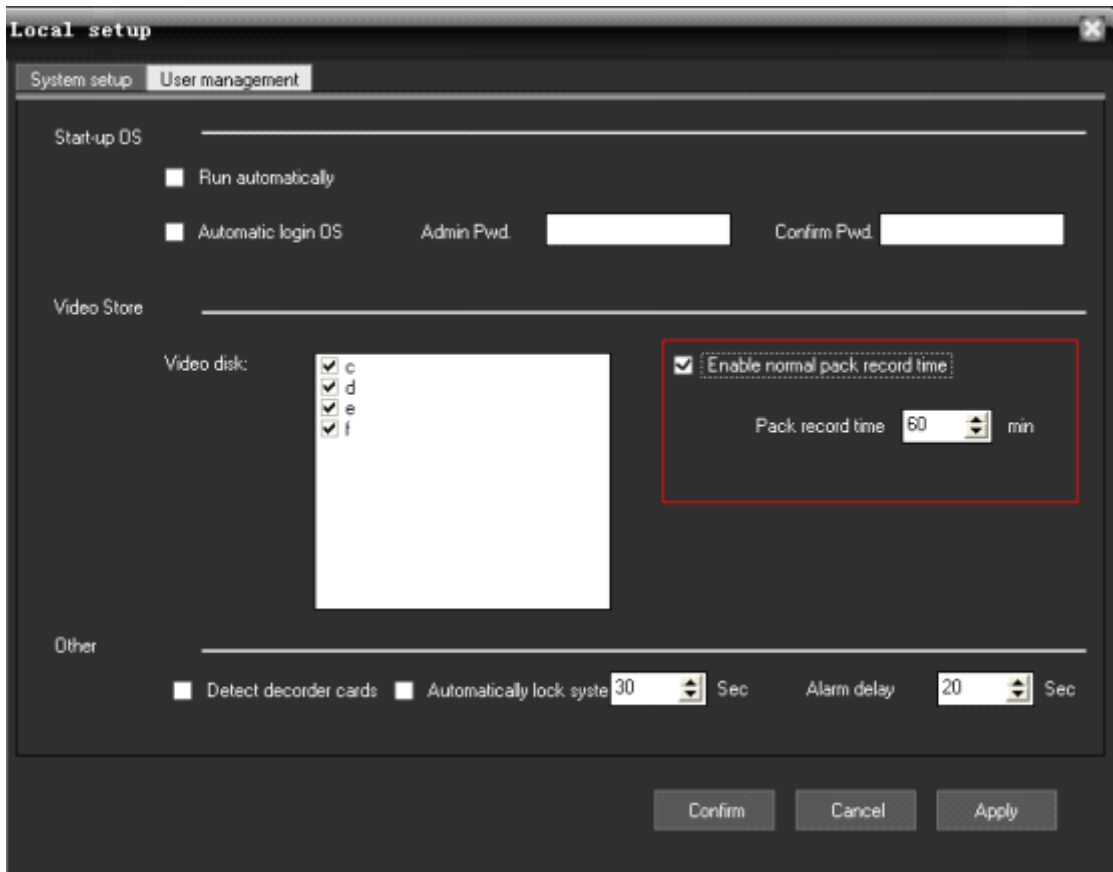
Click on the main menu "Recording Features", select "Forced to switch video file" menu



, the pop-up following confirm dialog box.

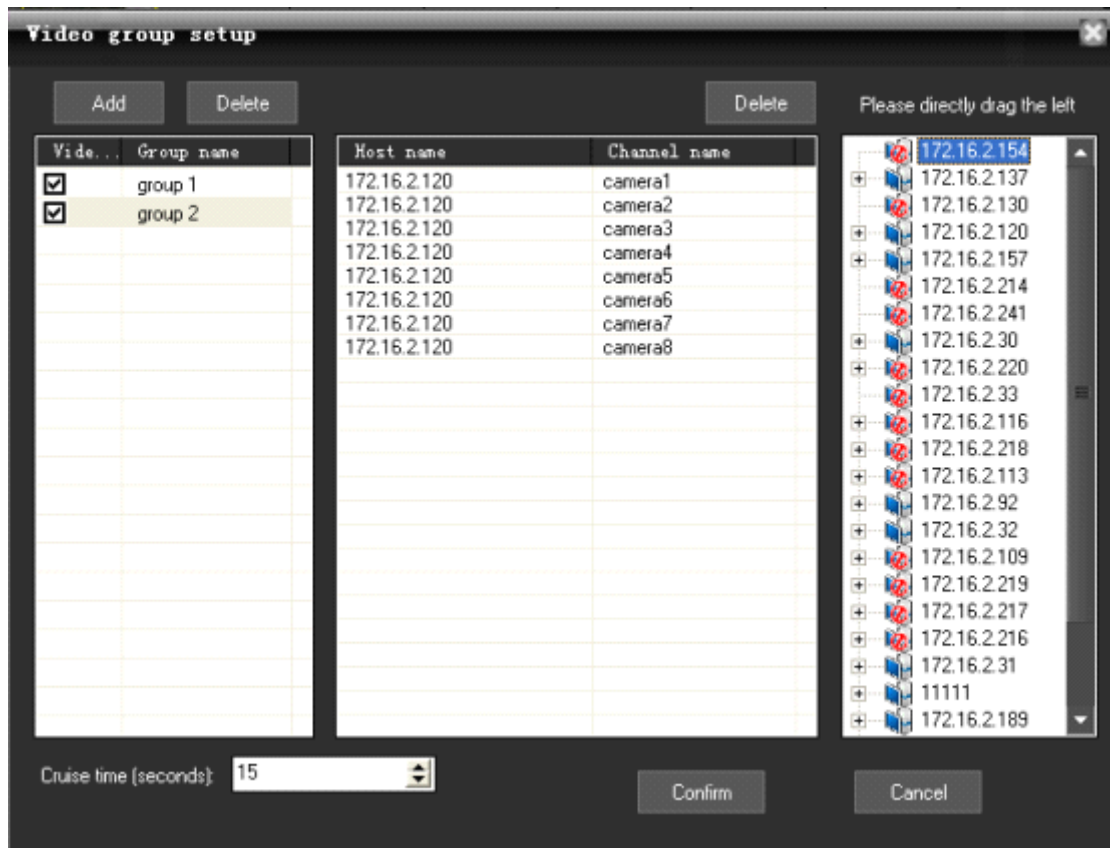


Click confirm button, all the recording video files will be packaged and then can be immediately replayed, although in the Local setup->System Setup, the Record time is 60 min. that is to say every 60 minutes, there will be one package in the Video Store area of the PC.



2.9. Advanced

2.9.1. Video group setup



Click on the main menu "Advanced" menu, choose "Group setup" menu, the pop-up "Video Group Setup" dialog.

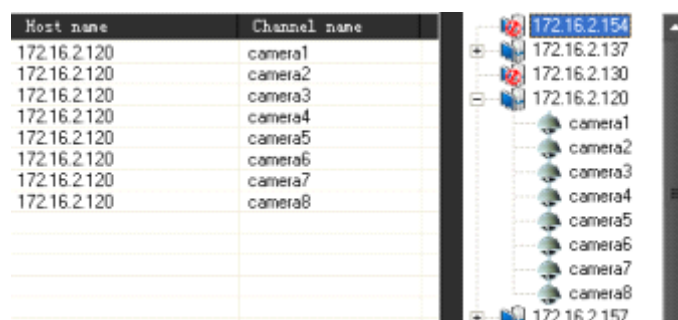
1、 Add video subgroups: adding video division click of a button.

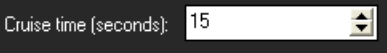
Add

2、 Delete video subgroups: click of a button to delete video division.

Delete

add video display images groups: the right camera icon will be dragged directly access the list can be added the camera channel.



3. Video settings as packet round: Amending the lower part of the value , depending on time round can be set up, check the video to determine which groups will enter the round as group.

Video ...	Group name
<input checked="" type="checkbox"/>	group 1
<input checked="" type="checkbox"/>	group 2

2.9.2. Video group switch

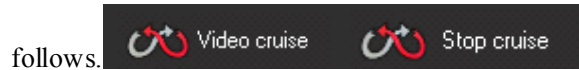
After setting multiple groups, multiple groups can be manually switched as follows:



Select one group, then all the channels of the group will open preview in the Real-time monitoring area.

2.9.3. Video cruise

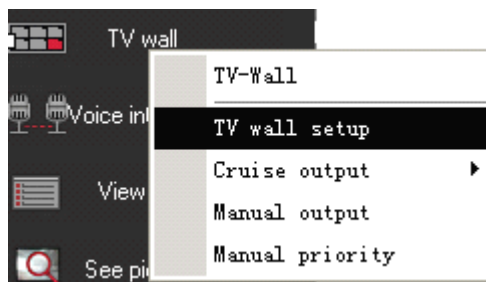
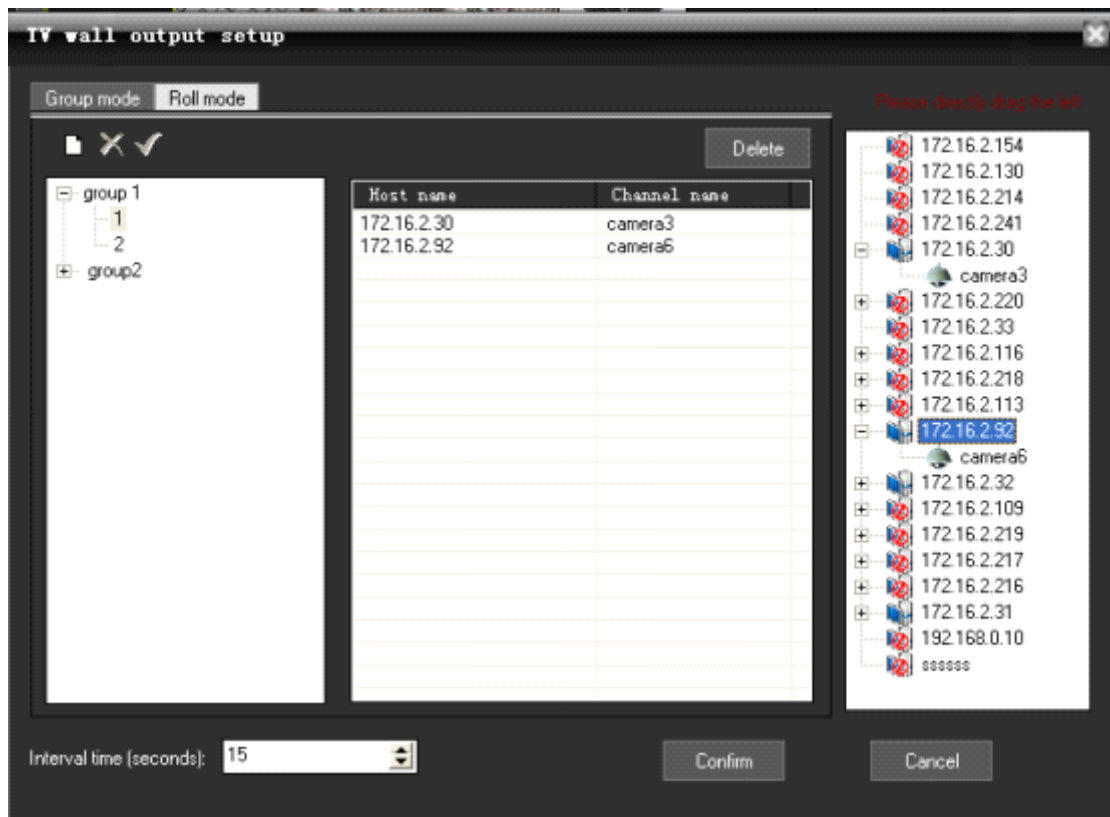
Click "Video cruise" button in the main menu "Advanced", then all the groups will poll and switch according to the cruise time. Every 15 seconds, the group will be switched to display, if set as






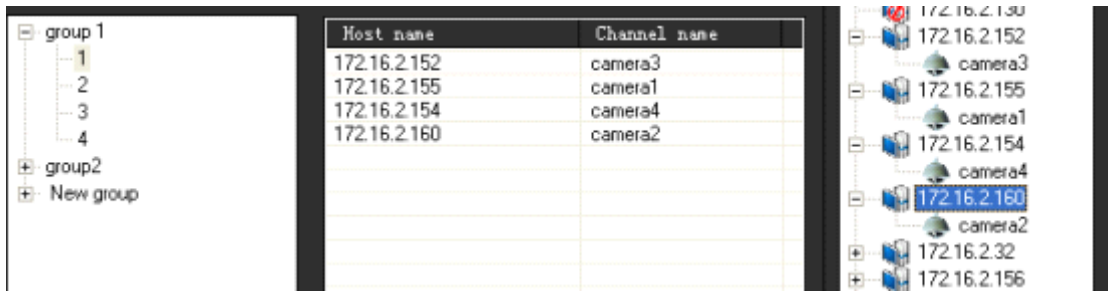
2.9.4. TV Wall

Click on Main Menu "Advanced" ->"TV wall", select "TV wall setup" menu, the pop-up "TV wall Output Settings" dialog.

Note: Decoder card must be installed or TV wall setup is disabled.



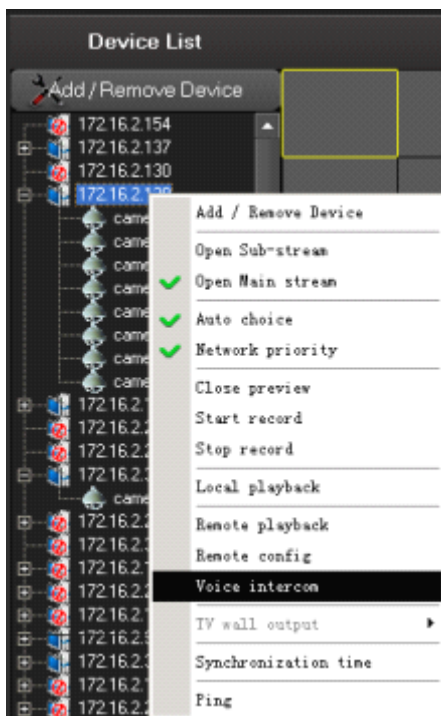
1. TV wall set up sub-groups: the click of a button , add TV output wall grouped under the group name below actual output channel matrix card number automatically generated output channel list, the click of a button  to delete the selected output sub-click of a button  Laws selected output division title. Below is the output of each division wall TV output channel, a corresponding output channel.
2. Television set output wall display images: the left side of the camera will be dragged directly on the camera can be selected for the television display output channel added output images. According to the output of each channel of the camera, and automatic segmentation images. The following chart output channel 1 added four camera images, when output to a television, the whole TV screen will be automatically divided into four images, showed that four camera images.



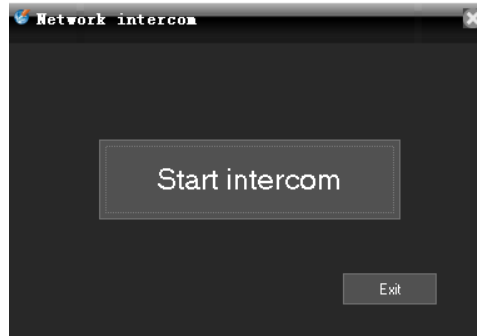
3. Polling wall television set output: the lower part of the revised value can be set by polling group output to the TV wall interval.
4. TV wall output operation: the main menu click on the "TV wall", select "Round robin output" or "Manual output" menu, can be achieved by grouping polling output to a TV wall or manually select group output to a TV wall.
5. If you do not want to continue to export images to TV wall at the main menu can "TV walls", select "Close output."

2.9.5. Voice intercom

2.9.5.1 Voice intercom (between CMS and DVR)



In the Device List area, right-clicked one device, select “Voice intercom”, the pop-up Network



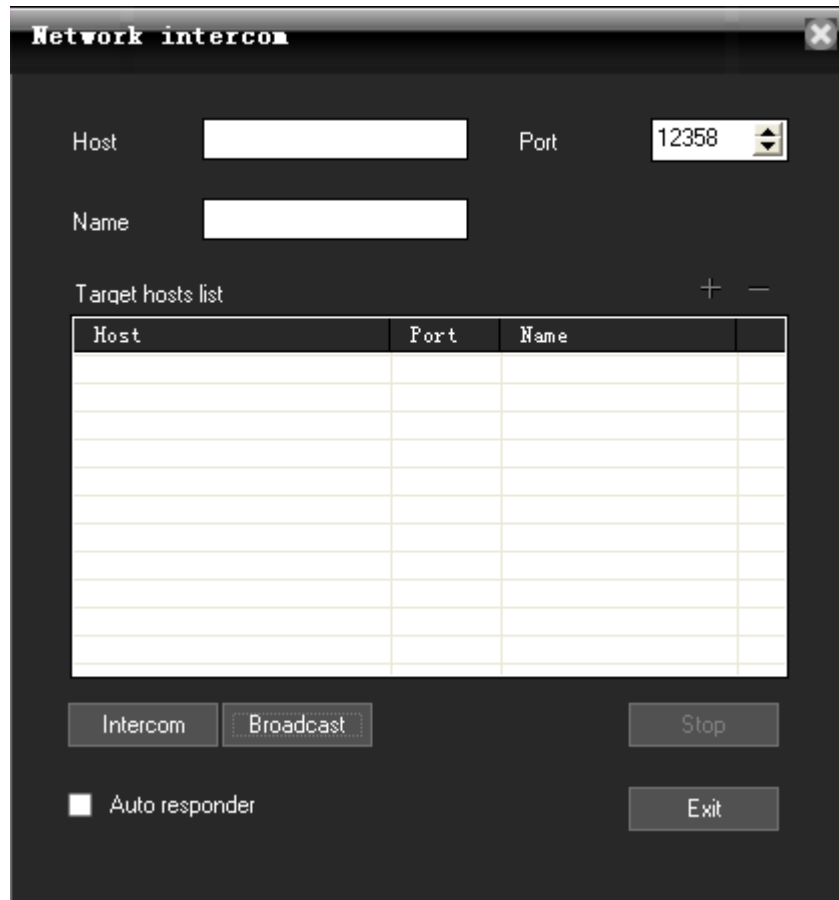
intercom dialog box as follows.

Click the "Start intercom" button to start chat.



Click the "Stop intercom" button to stop chat.


2.9.5.2 Voice intercom (between CMS and CMS)




Go to main menu->advanced->voice intercom, then it pop-up the window.


1, set the host:

A, add the host:

First input the IP or domain of the host, then click , then the host is added


B, delete host:

Select a host, then click .

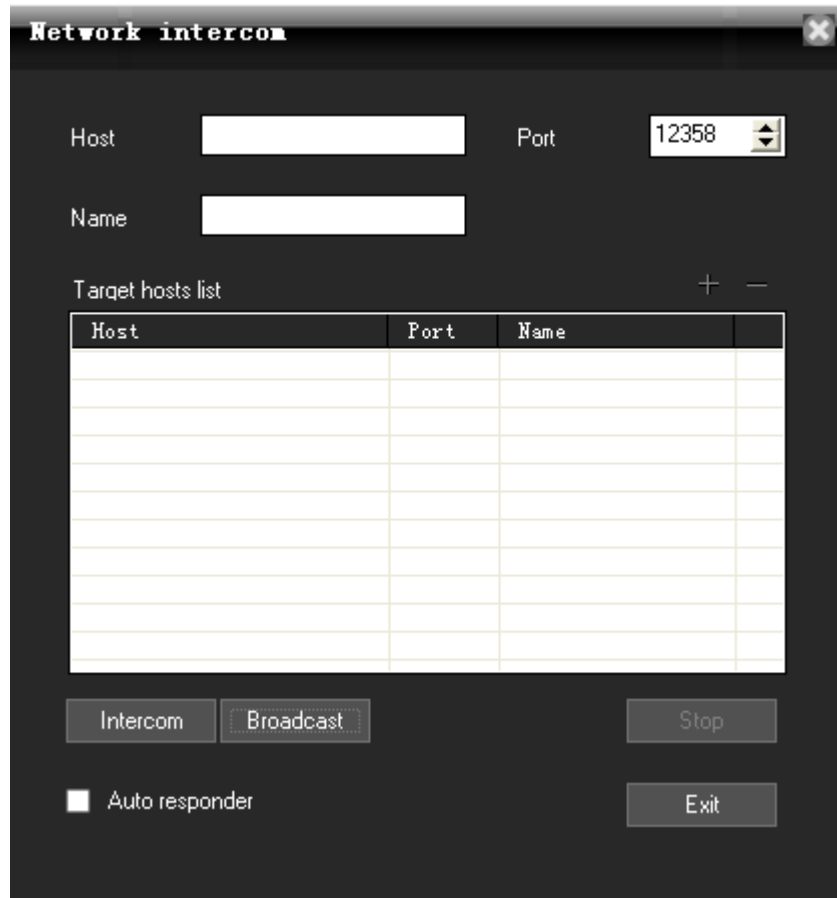
C, after enable  **Auto responder**, CMS directly start voice intercom without the pop-up request.

2, control voice intercom:

Select a host, then click  to start voice intercom.

Click  to stop voice intercom.

2.9.5.3 voice broadcast (between CMS and CMS)



Go to main menu-> advanced-> voice intercom, then click **Broadcast** in the pop-up window.

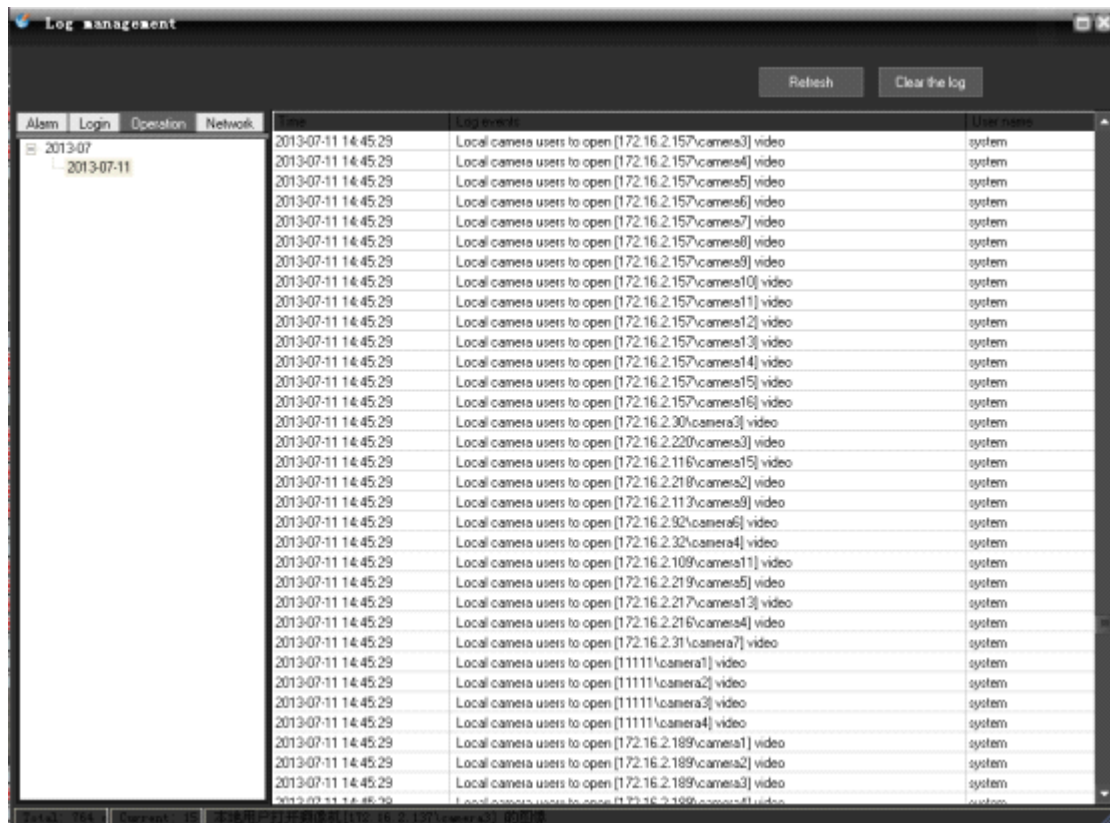
1, set broadcast target host. The same way as the voice intercom, and you can not set target host while broadcasting.


2, control broadcast:

Select a target host, then click **Broadcast** to start broadcast.

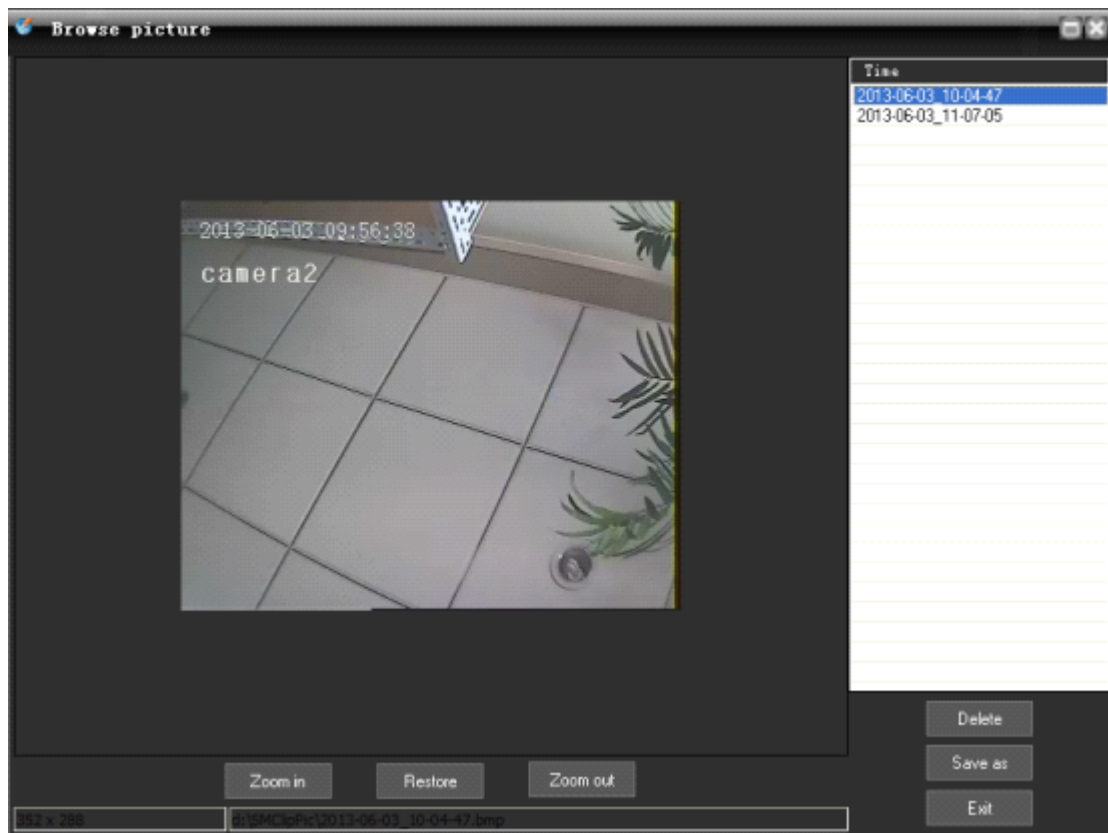
Click **Stop** to stop broadcast.

2.9.6. View log



Click on the main menu "Advanced", select "View log" menu  the pop-up "Log management" dialog box.

2.9.7. See picture



Click on the main menu "Advanced", select "See picture" menu , the pop-up plug dialog box.
Note: only can see the picture in the default snapshot path.