

CMS

(Central Monitoring System)

V1.1E

INDEX

1.1 CMS Overview	2
1.2 CMS Recommended Specification.....	2
1.3 CMS Installation	2
1.4 CMS Window	4
1.5 CMS Start	5
1.6 CMS MENU	6
1.6.1 PTZ Control.....	6
1.6.2 Event List Search.....	7
1.6.3 CMS Setup	7
1.6.4 E-Map Setup	11
1.7 CMS Search.....	12
1.7.1 Search Method (1).....	12
1.7.2 Search Method (2).....	13
1.7.3 Local Search.....	13
1.8 CMS Backup	14
1.8.1 Backup Method (1).....	14
1.8.2 Backup Method (2).....	15
1.8.3 Local Backup	15
1.9 CMS Remote Setup	16
1.9.1 Setup Method (1).....	16
1.9.2 Setup Method (2).....	16

1.1 CMS Overview

CMS supports remote live viewing, remote search, backup, camera control and other functions, linking multiple DVRs.

1.2 CMS Recommended Specification

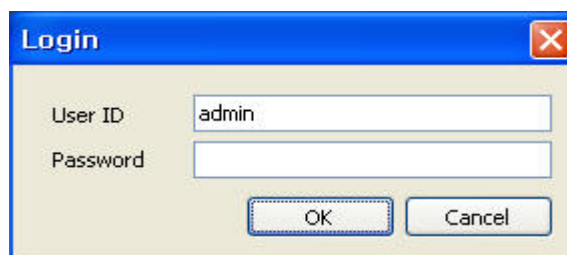
CPU	Intel Quad Core Q9000 Series or higher
	3GHZ
Memory	3GB
VGA	.ATI Radeon Series 512MB .Nvidia Geforce Series 512M
Disk space	20GB or higher
OS	Window XP, Window Vista, Window7(32bit)
Others	Direct-X 9 or Higher

Before installing the program, check the PC specifications.

1.3 CMS Installation

-
- 1) double Click **CMS SETUP.EXE** file of **CMS Installer folder**
 - 2) click YES or NEXT following Installation Wizard
 - 3) **CMS** Icon will appear on Desktop
 - 4) double click the **CMS** icon

* For your reference, Default ID and PW are **admin**. Click OK



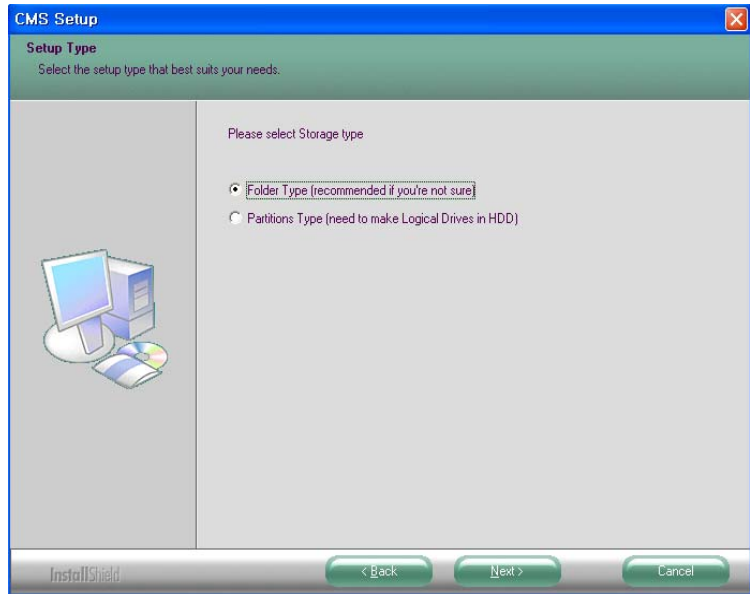
The image shows a 'Login' dialog box with a blue title bar. The title bar contains the text 'Login' and a close button (X). The dialog has a light beige background. It contains two input fields: 'User ID' with the text 'admin' and 'Password' which is empty. Below the fields are 'OK' and 'Cancel' buttons.

*CMS Setup Procedure

1. Storage Type Setting for Local Storage

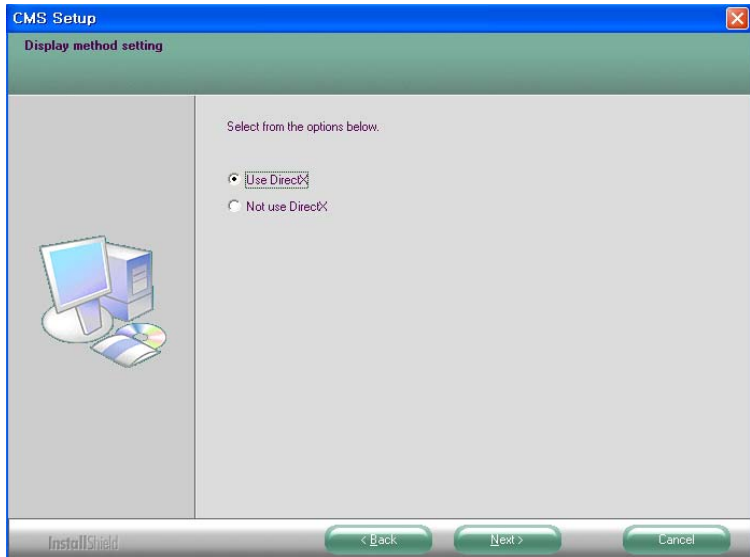
You can select a folder or a drive type.

- Folder Type
- Partitions Type



2. Use Direct-X Setting

- Use Direct-X
 - For Using Direct Draw
- Not use Direct-X
 - For Using GDI or No Direct Draw



3. Windows Media Component Setup

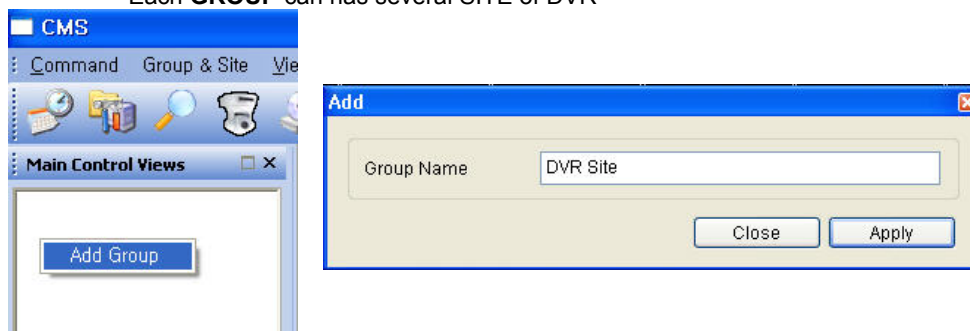
- This is codec for saving Data with AVI file.
- For Window Media Player



1.5 CMS Start

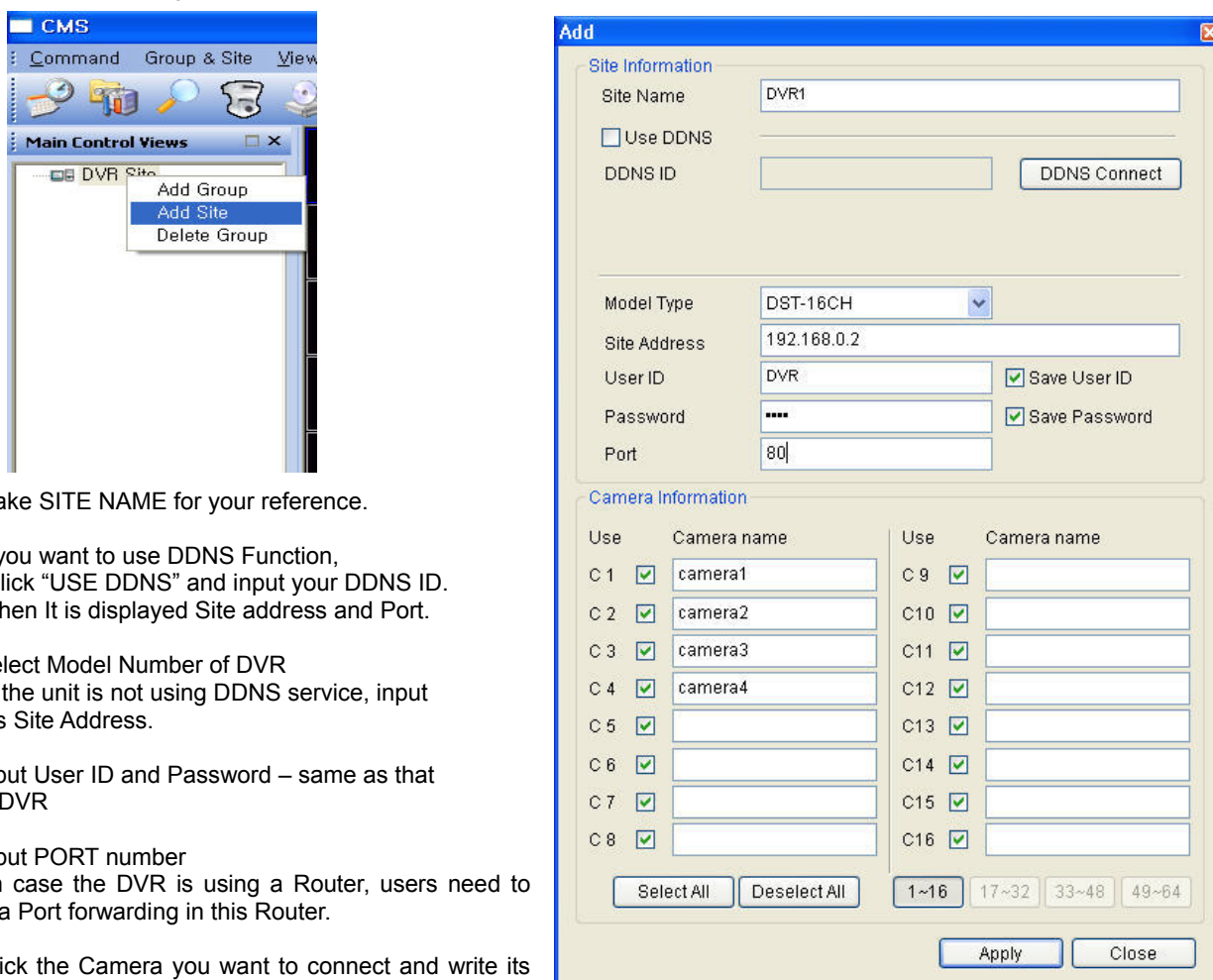
■ GROUP Add

Right Click at Group/Site Bar. Select Add Group
Each **GROUP** can has several **SITE** of DVR



■ SITE Add

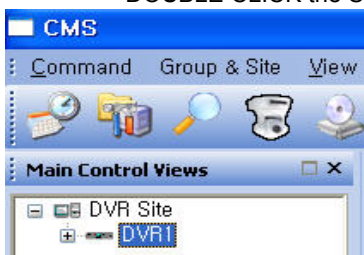
Right Click at the **GROUP** name and select Add **SITE**



- Make **SITE NAME** for your reference.
- If you want to use DDNS Function, Click "USE DDNS" and input your DDNS ID. Then It is displayed Site address and Port.
- Select Model Number of DVR
if the unit is not using DDNS service, input its Site Address.
- Input User ID and Password – same as that of DVR
- Input PORT number
In case the DVR is using a Router, users need to set a Port forwarding in this Router.
- Click the Camera you want to connect and write its information for your reference
- Click APPLY and Close

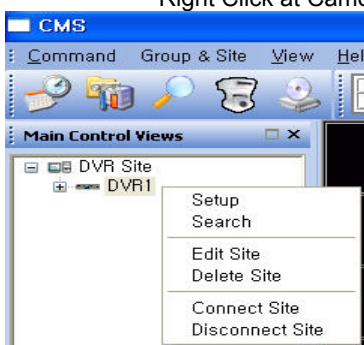
■ **Connect to the SITE**

DOUBLE CLICK the SITE NAME or right click and select “CONNECT Site”



■ **Activate SITE Menu**

- * Right Click at the SITE name
- * Right Click at Camera Window during Monitoring



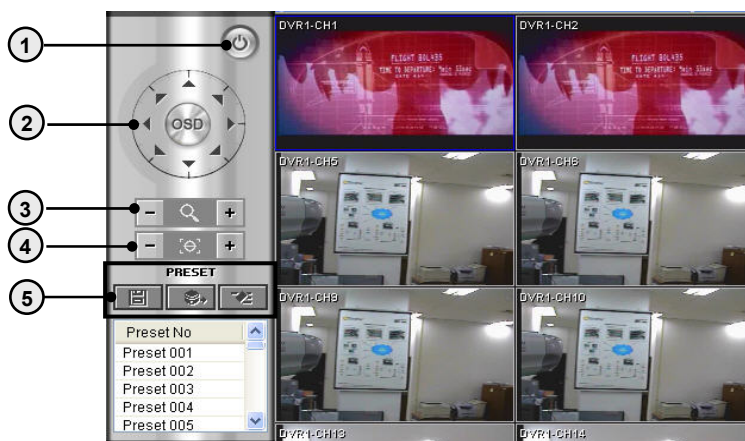
- * Setup – DVR setup
- * Search – DVR search
- * Edit Site – Site Information edit
- * Delete Site – Delete this Site
- * Connect Site – Connect to the DVR
- * Disconnect Site – terminate connection

1.6 CMS MENU

1.6.1 PTZ Control



control remote PTZ Camera which is connected to the DVR



-
- 1 Exit – go back to Main Menu
 - 2 PTZ Control – Pan / Tilt / Zoom Control
 - 3 Zoom In/Out – Zoom Out (-), Zoom In (+)
 - 4 Focus Control – Adjust the focus if necessary
 - 5 Preset – Preset Save, Perform, Delete
-

1.6.2 Event List Search



Event Data Search coming from DVR
 You need to activate **Event List View setting** in CMS Option Setup

- 1 Event List Search – you can select Event Type which you want to search
- 2 Event List – It shows Events with its Time and Site name, Channel, IP address, Port information

1.6.3 CMS Setup



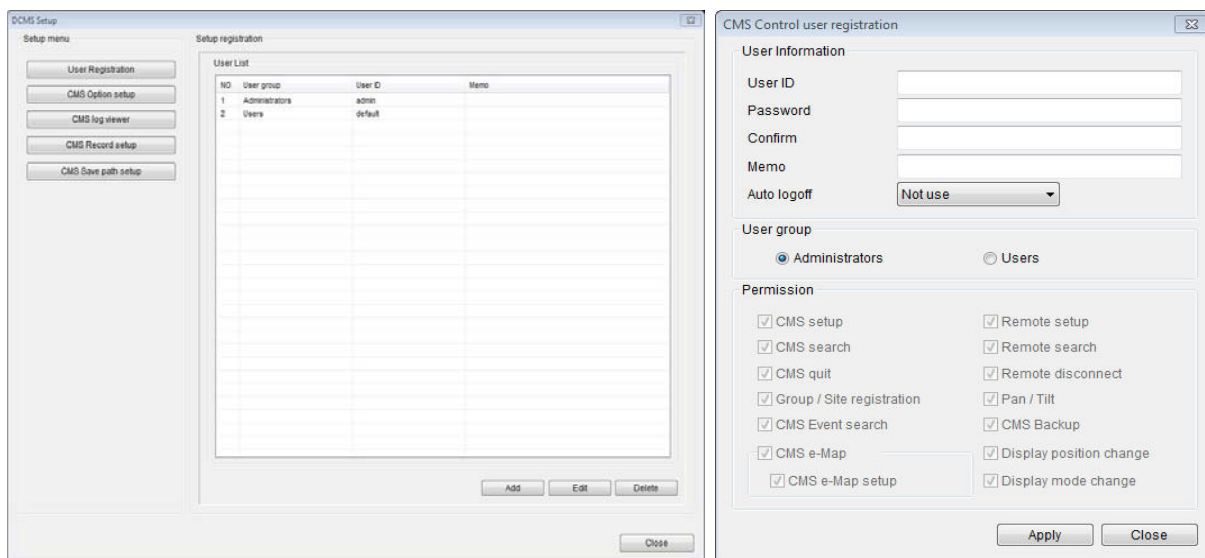
* For CMS setup, right click Mouse at CMS Setup Icon

*CMS Setup Menu

- ① User Registration
- ② CMS Option Setup
- ③ CMS log viewer
- ④ CMS Record Setup
- ⑤ CMS Save path Setup (CMS Storage type - Folder type)
 CMS Disk Management (CMS Storage type - Partitions type)

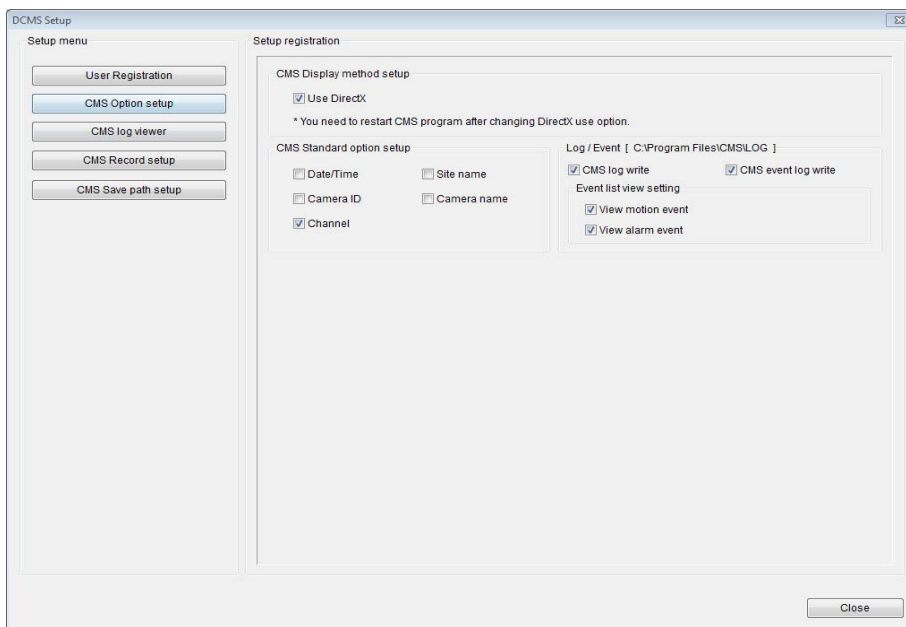
■ **USER Registration**

This is the User Registration Screen. You can register the desired account.



- 1 Add – It can register the desired account.
- 2 Edit – It can change the desired account information.
- 3 Delete - It can erase the desired account.

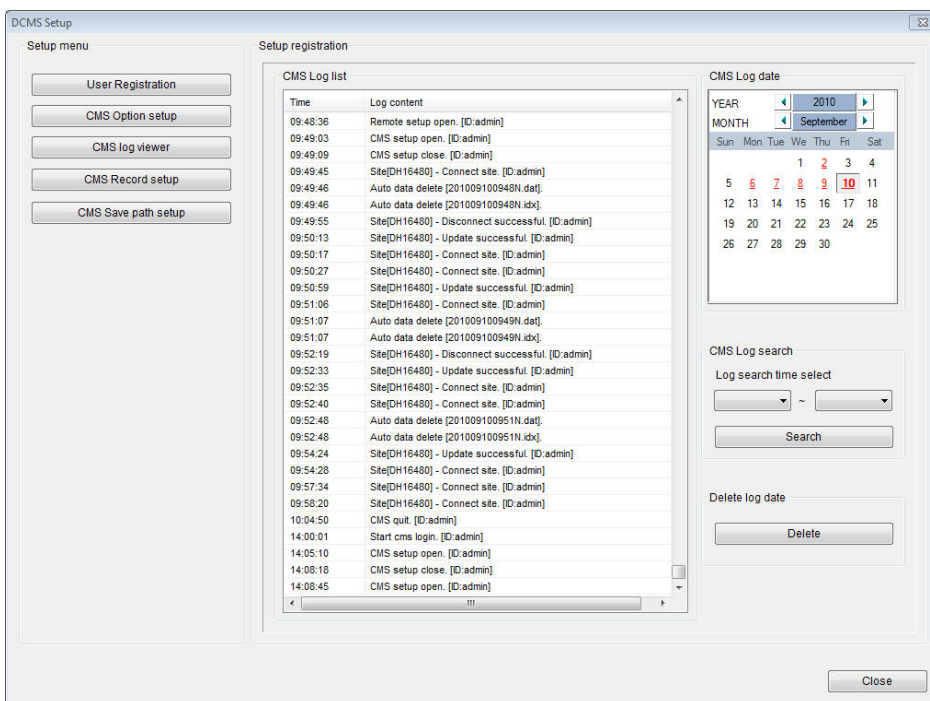
■ **CMS Option Setup**



- 1 CMS Display Method Setup - If it can't show Live Screen with Using direct-X setup, Please uncheck this function and restart CMS Program.
- 2 CMS Standard Option Setup – It can set the displayed channel information in Live screen.
- 3 Log /Event
 - System Log – CMS Log, CMS Event log. You can show it in CMS log viewer menu.
 - Event List View - Motion event, Alarm event. It is displayed in Event Tab of Live Screen.

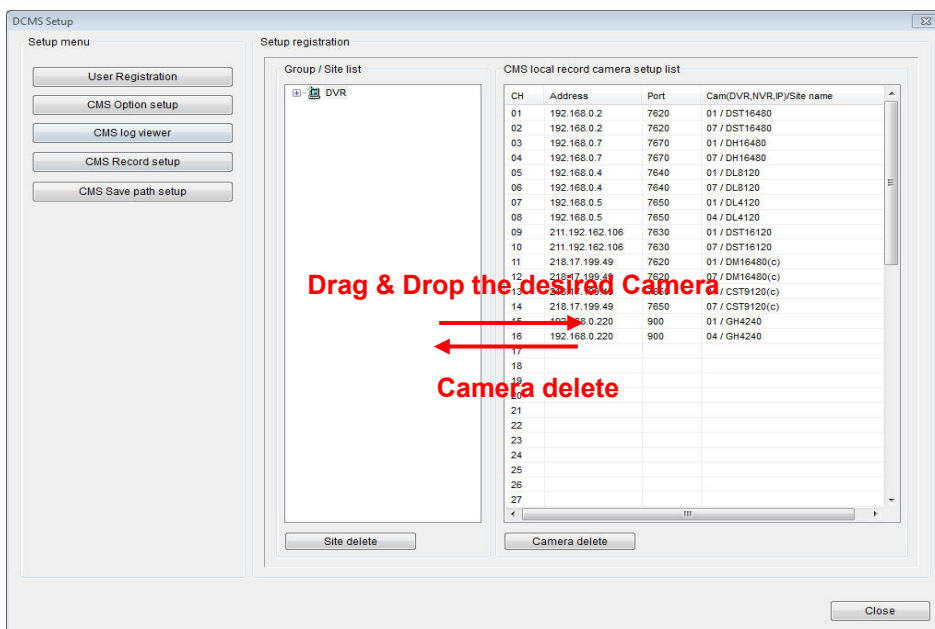
■ CMS Log Viewer

It display all CMS log lists. You can search the log list of the desired date.



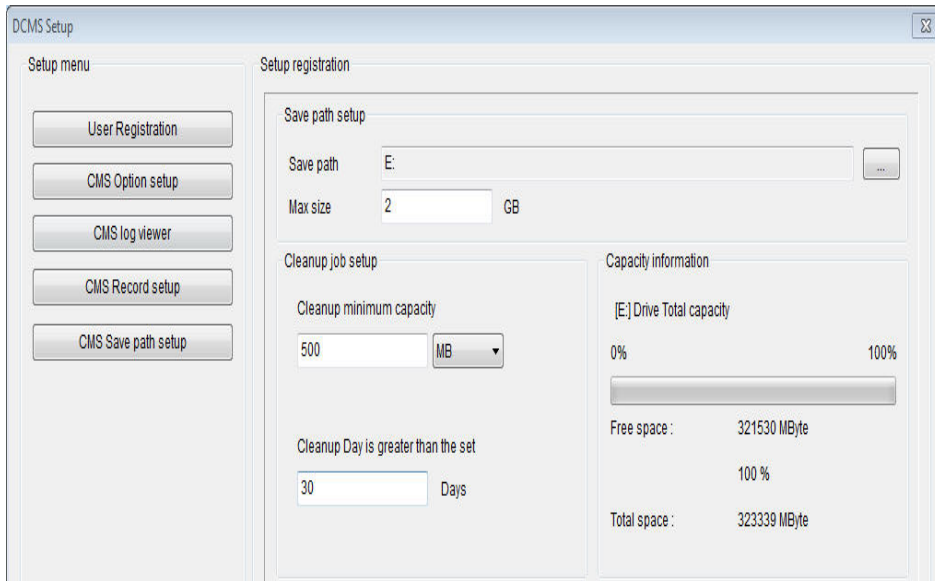
■ CMS Record Setup

This is CMS Record Setup Screen. You can set to record continuously the desired channel in Local PC.



■ **CMS Save path Setup**

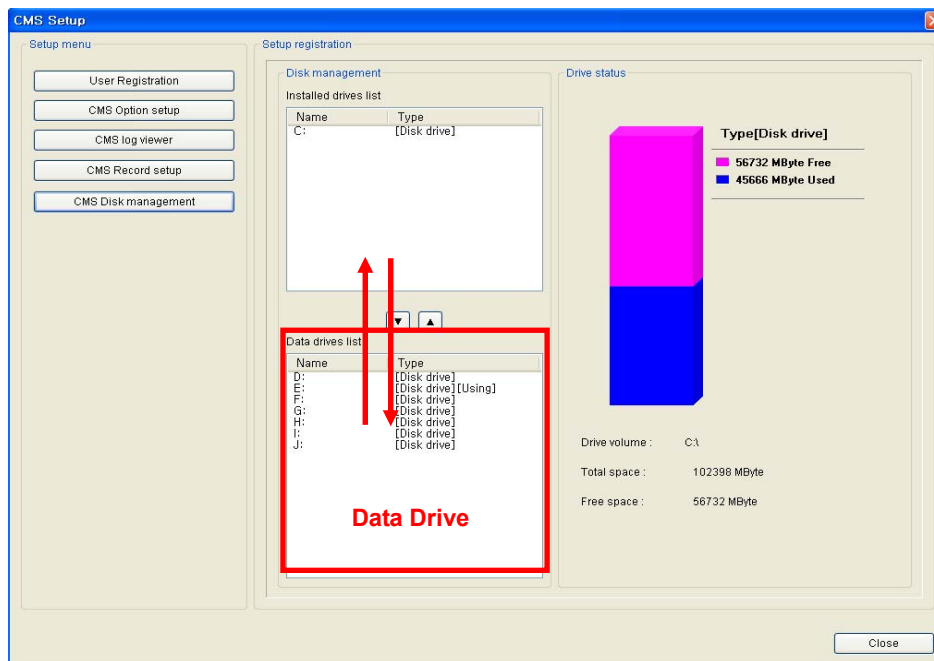
It is shown this menu when you select the folder type for CMS Storage Type. You can set the desired Save path and Cleanup day & capacity.



-
- 1 Save path Setup - It can change the desired Save Path and Recording Size.
 - 2 Cleanup job Setup - It can change the desired cleanup Day and erasable minimum Size.
 - 3 Capacity information - It display the HDD Capacity of the save path folder.
-

■ **CMS Disk Management**

It is shown this menu when you select the Partitions type for CMS Storage Type. You can set the desired drives in disk management menu.



1.6.4 E-Map Setup



* For E-Map setup, right click Mouse at CMS Setup Icon. It can only register the BMP file format.

Right Click Mouse as right image.

Please go Setup mode.

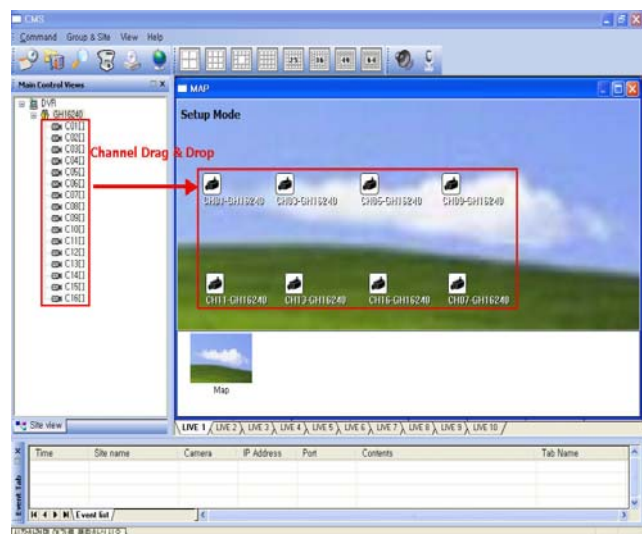
After right clicking mouse, Add the desired map.

Default is no image. So you must add the image.



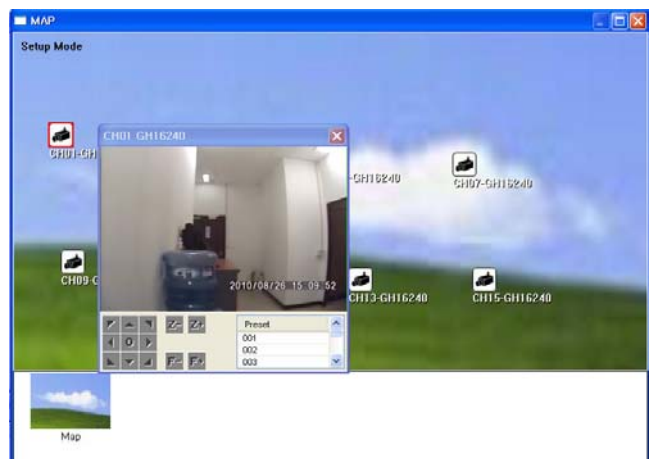
<How to register the channel to map image>

In Setup Mode, Please drag &drop the desired channel from left Site view menu to right map.



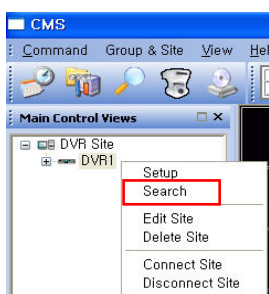
After finishing Camera setting, Please escape the Setup mode.

If you double click the desired channel, you can show this channel.



1.7 CMS Search

It is different the search method according to the model Series.

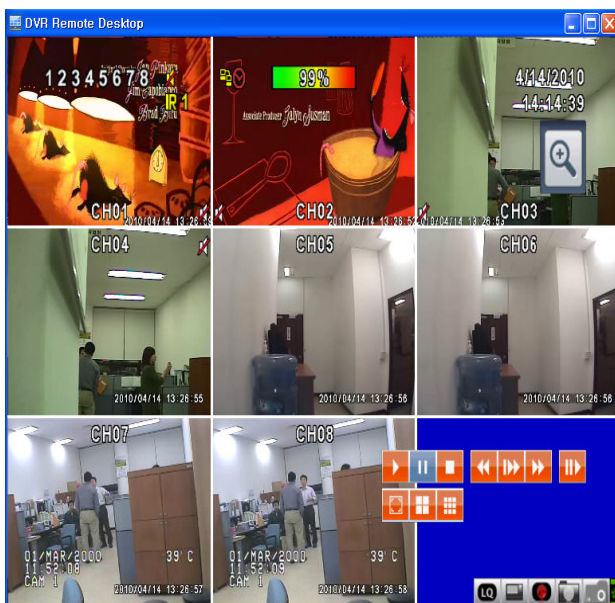
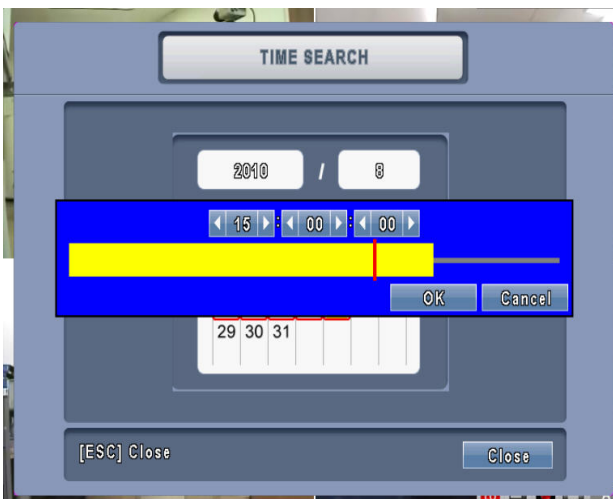
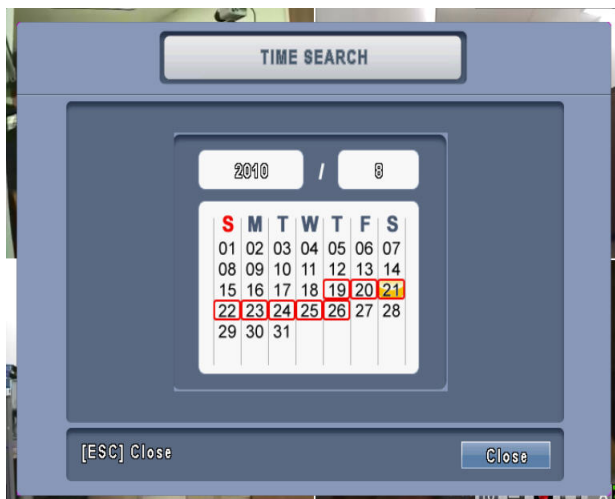


* For Search, right click Mouse as left image

1.7.1 Search Method (1)

After selecting the desired date in Calendar, Please select the specific time with mouse in time bar.

DVR will playback the selected recording data.

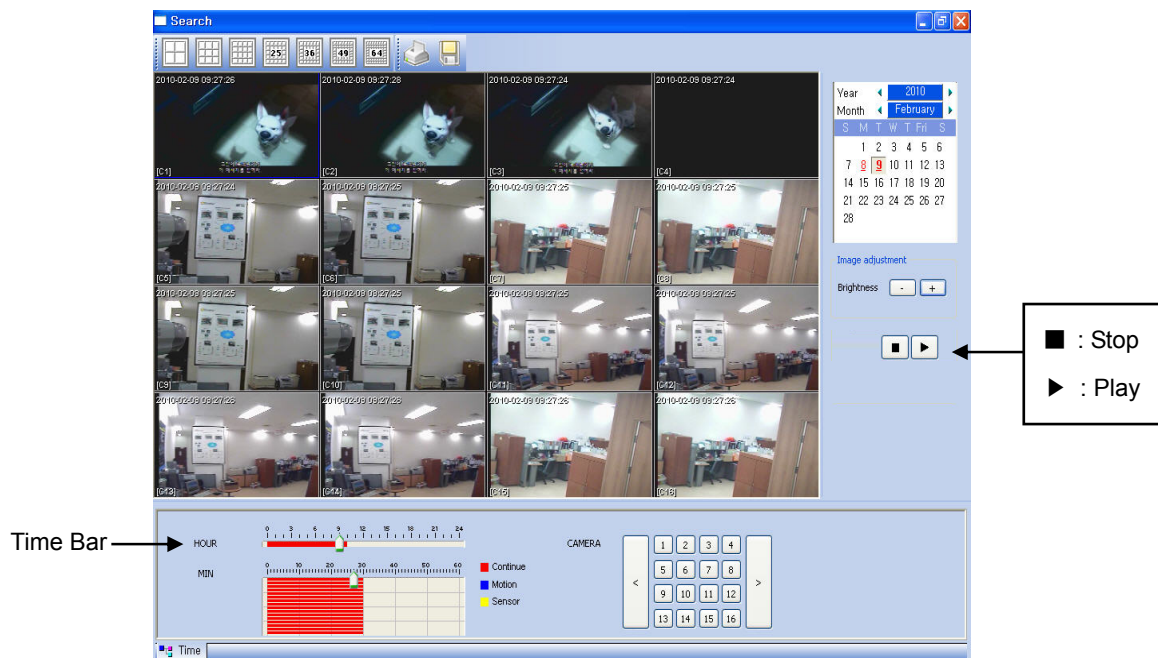


ICON	Description
	[<< / <] Fast rewind
	[>> / >] Fast forward
	Play/pause
	[▲ / SLOW] → slow playback
	[▼ / ■] stop playback
	Playback channel by channel with snap shot display
	Full screen display
	Quad display
	9-channel display
	Zoom-in display

1.7.2 Search Method (2)

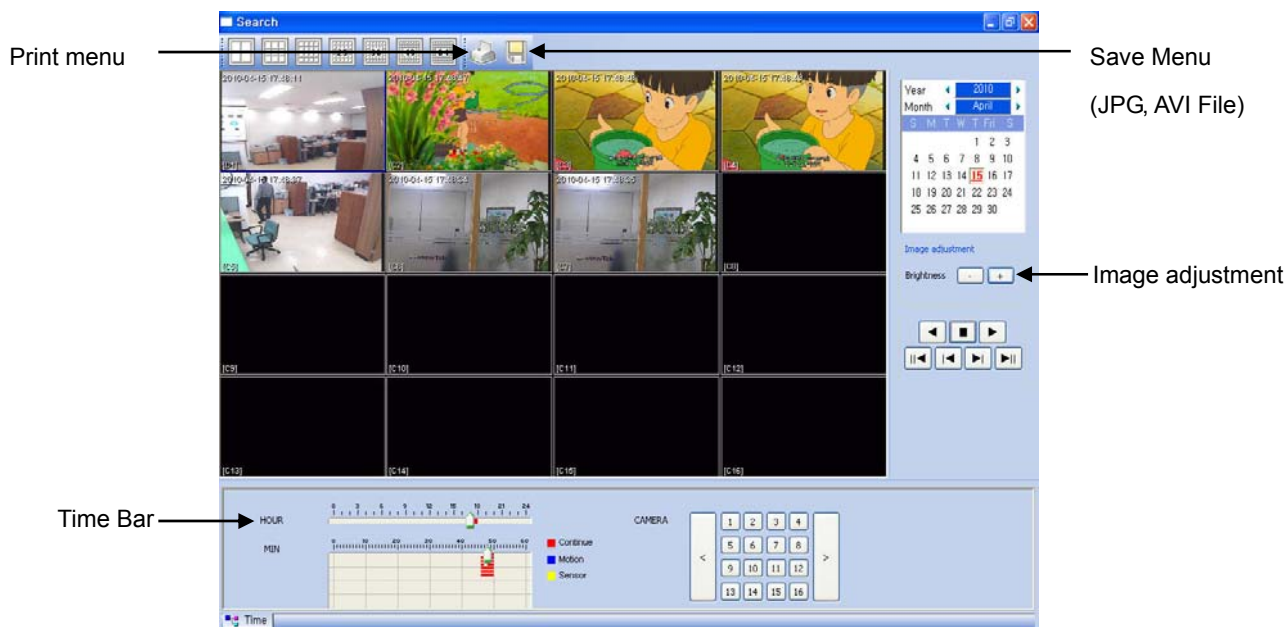
After selecting the desired date in Calendar, Please select the specific time with mouse in time bar.

DVR will playback the selected recording data.

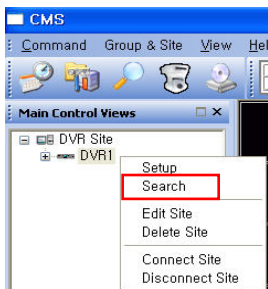


1.7.3 Local Search

It can search the record data which you selected in CMS record Setup Menu.



1.8 CMS Backup



It is different the Backup method according to the model Series.

* For , right click Mouse at CMS Setup Icon

1.8.1 Backup Method (1)

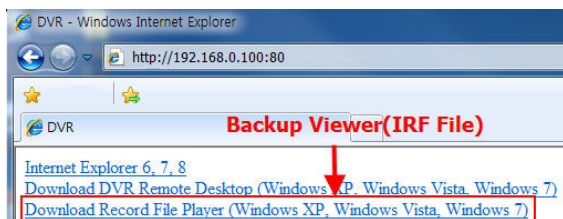
At first, Connect the search mode

You can backup the desired Data into PC.

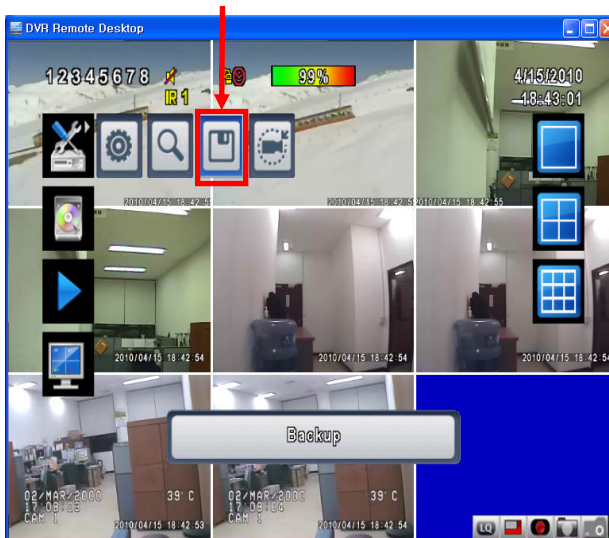
The format of backup file is IRF file.

It can be played by a Backup viewer for IRF file.

Please download Backup-viewer via web connection.



Backup Menu

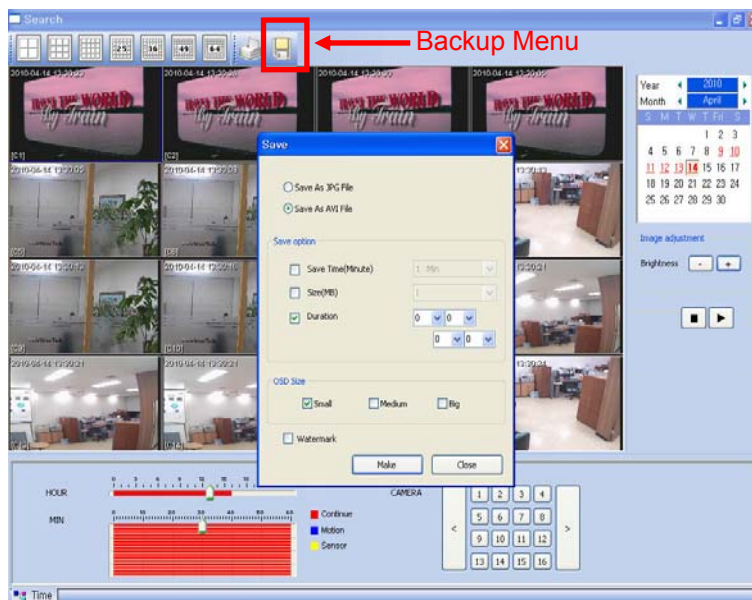


Item	Description
From	The start time of backup file
To	The end time of backup file
Device	Select PC as the backup device
Free Space	The available space in your backup device.
Refresh	Recalculate the available space of backup device.
Required Space	Show the size of the backup file
Calculate	Calculate the size of backup file
Start	Start backup operation.

1.8.2 Backup Method (2)

You can backup the desired Data into PC.

After entering Search mode, Press the Backup Icon



1. Backup Method - JPG File, AVI File
2. Save option
 - Save time : 0~30 min
 - Size(MB) : 1~100 MB
 - Duration : User can select the desired time
3. OSD Size - You can select small or Medium or Big
4. Print - You can print to add several channel images

1.8.3 Local Backup



* For Local Backup, right click Mouse at CMS Setup Icon

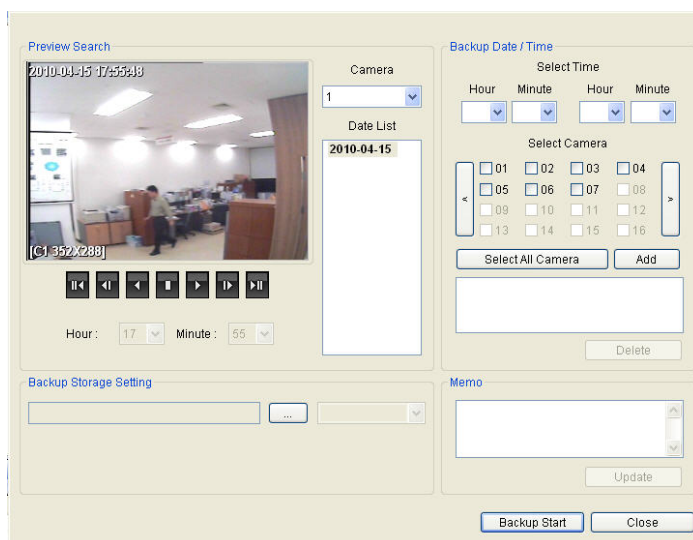
After Selecting the data of the desired Channel, Press Backup start Icon

It can be played by a Backup viewer

* Backup viewer Program

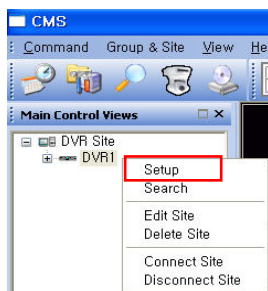
Please go C >>Programfiles>>CMS folder.

You can find the Backup Viewer file.



1.9 CMS Remote Setup

It is different the remote setup method according to the model Series.

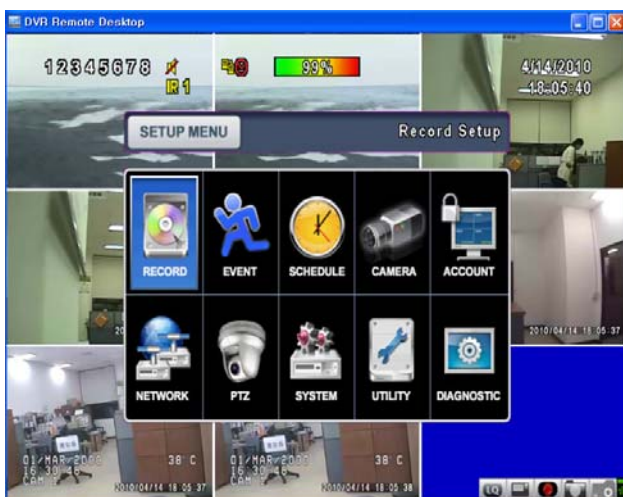


* For Remote Setup, right click Mouse as left image

1.9.1 Setup Method (1)

It is same the setup menu of Real DVR.

Please refer to DVR Manual for the Detail Setting .

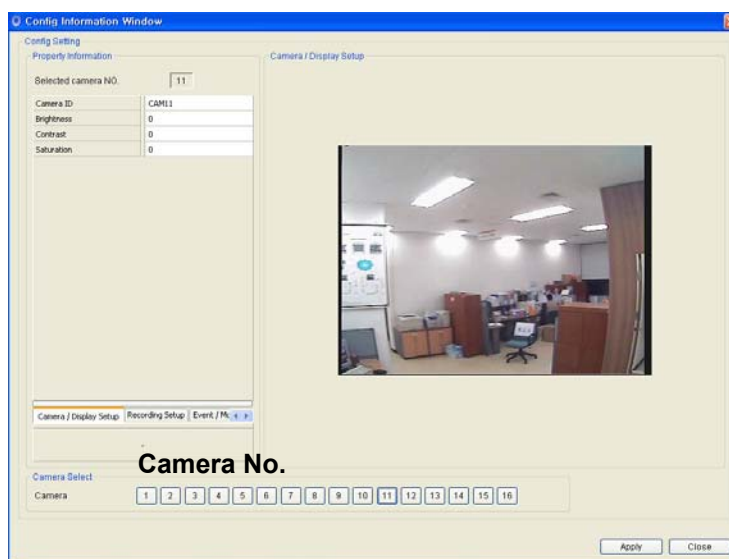


1.9.2 Setup Method (2)

It classify 3 kinds of setup menu.

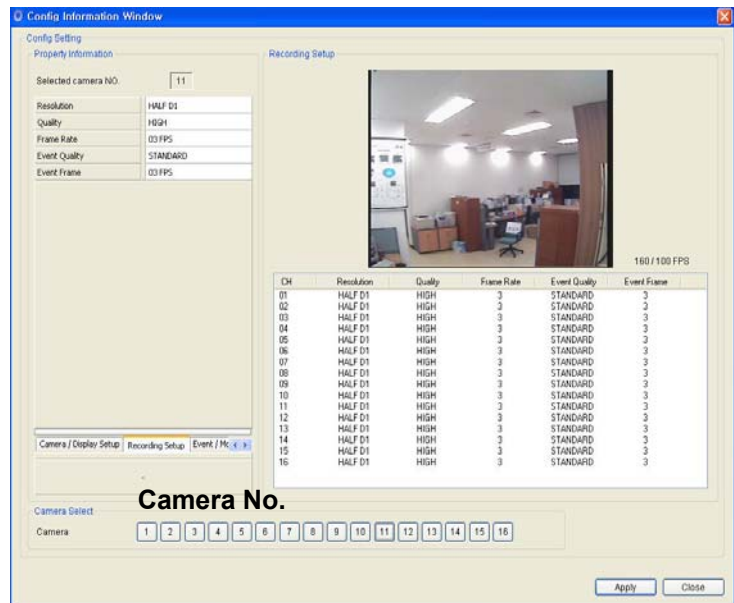
1. Camera/ Display Setup

	Description
Cam ID	Enter ID in english (Max 10)
Brightness	-10~10 (Default :0)
Contrast	-10~10 (Default :0)
Saturation	-10~10 (Default :0)



2. Recording Setup

	Description
Resolution	D1, HALF D1, CIF
Quality	Very high, High, Standard, Low
Frame Rate	NTSC: 0~30 fps / PAL : 0~25 fps
Event Quality	Very high, High, Standard, Low
Event Frame	NTSC: 0~30 fps PAL : 0~25 fps



3. Event/ Motion Setup

	Description
Motion Status	Enable/Disable
Sensitivity	0~8

	Description
Select Area	Red Field
Deselect Area	Transparent Field

